

Prepared By: Ryland R. Benzing, P.L.S. #22572 Benzing Surveying, LLC  
 808 5th Ave. SW Waukon, Iowa 52172 Phone: (563) 568-2136

UNITED STATES PUBLIC LAND SURVEY CORNER CERTIFICATE

OF

Land Survey Monuments situated in Section 32, Township 94 North, Range 14 West, of the Fifth Principal Meridian, Chickasaw County, Iowa. Previously recorded in 1) (No Record) 2) (No Record) in County Recorder's Office.

(book, page, document number, etc.)

(Show reason for preparing this certificate, the evidence and detailed procedures used in establishing the corner positions and monumentation found or placed.)

Monument Description and Remarks:

1) West-Northwest Eighth Corner Section 32

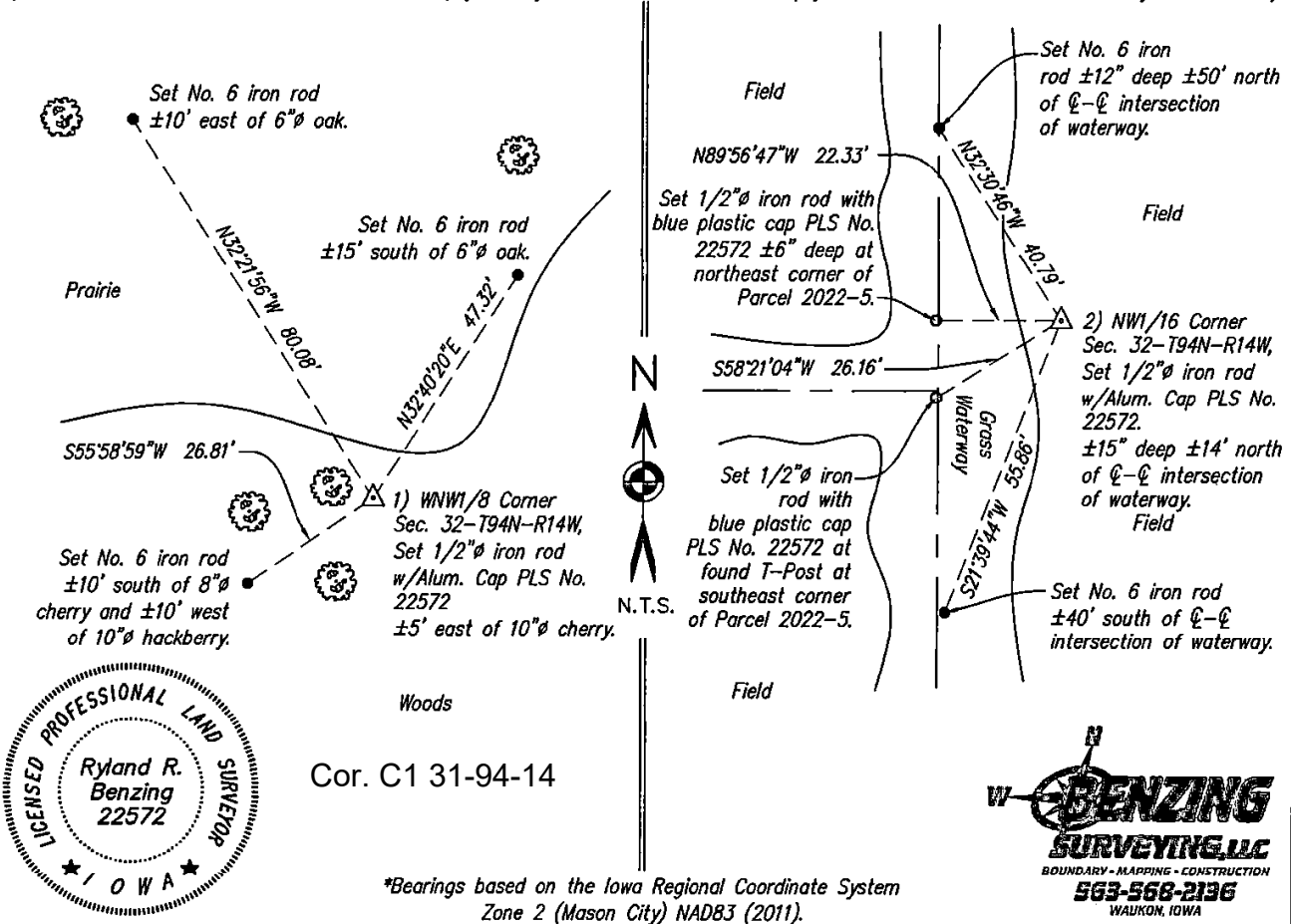
We found the W1/4 and NW Corner of Section 32 and computed a location at the midpoint and online between them for the corner location. We searched a 20' radius area with the magnetic locator, but found nothing. We set a 1/2" iron rod with aluminum cap PLS No. 22572 at the computed location.

2) Northwest Sixteenth Corner Section 32

We computed a location at the intersection of 1/4-1/4 lines in the NW1/4 of Section 32. We searched a 20' radius area with the magnetic locator and found only a T-Post in the ground at the approximate intersection of the grass waterways. This T-Post was the basis of what was determined to be the perpetuation of long term occupation lines and the reason for the survey of Parcel 2022-5 and 2022-6 in document 2022-0168. We set a 1/2" iron rod with aluminum cap PLS No. 22572 ±15" deep at the computed location as we could not find documentation that this corner monument had ever been set or established by a surveyor in the field.

PLAN - VIEW

(Show a minimum of three reference ties to durable physical objects, relevant monuments and physical conditions that will enable recovery of the corner.)



I hereby certify that this land surveying document was prepared and the related survey work was performed by me or under my direct personal supervision and that I am a duly licensed Professional Land Surveyor under the laws of the State of Iowa.

Ryland R. Benzing Date: 5-19-22  
 Ryland R. Benzing, PLS No. 22572  
 My license renewal date is December 31, 2022  
 Pages or sheets covered by this seal: 1 of 1

Corner(s) to be Indexed				
Corner	Section	Twp	Range	
WNW1/8 Cor.	32	94N	14W	△
NW1/16 Cor.	32	94N	14W	△