

W 31-94-14

Filed 2005-0040
2005 Jan 7 8:59 AM

Lee O. Gallentine IS, Ryken Engineering, 711 Park Avenue, Ackley, IA. 50601 - Ph. 641-847-3273 - Fax 641-847-2303

UNITED STATES PUBLIC LAND SURVEY CORNER CERTIFICATE

Land Survey Monuments situated in Section 31, Township 94 North, Range 14 West, of the Fifth Principal Meridian, Chickasaw County, Iowa, Previously recorded in Inst #2004-0883 in County Recorder's Office

(Show reason for preparing this certificate, the evidence and detailed procedures used in establishing the corner positions and monumentation found or set.)

Monument Description and Remarks:

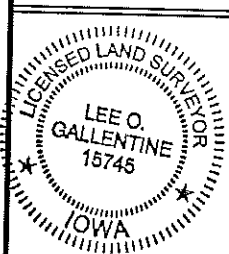
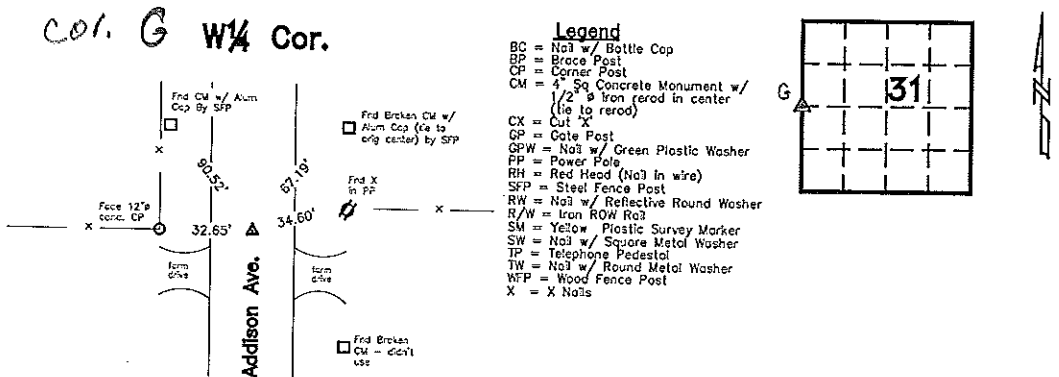
W 1/4 Cor - Chickasaw Co Rec's Bk 156 Pg 244 and Inst #2004-1022 indicate that corner is monumented with 'Fd Iron Pin'. Floyd Co Rec's Inst #2004-1040 and Chickasaw Co Rec's Inst #2004-0883 indicate that corner is monumented with 'Found 1" square twisted rebor'. Both Co Engr's records indicate that corner is monumented with the same as the applicable corner certificates with the same ties.

Searched area with metal detector, excavated 2.0' x 2.0' deep hole and found 1/2" x 1.8' twisted iron pin 0.2' deep (leaning severely - unable to determine original location of pin). Therefore, removed pin, continued excavating, and found 3/4" sq iron pin (bent) 1.9' deep in centerline of gravel road N-S, 1.5' S of fenceline W and 9.0' +/- S of fenceline E. Record ties are within reason. Therefore, removed 3/4" pin, straightened, reset in its original location and depth and set 1 1/4" x 2.0' orange capped iron pipe (#15745) over pin to raise up monumentation and used it as the correct corner. Pipe is 0.5' deep. All ties are plumb distance unless indicated otherwise.

This certificate is being prepared because there are changes to ties of record, there is a change to monumentation of record, and this corner was used for a survey in this section for Wendell E and Lillian D Lampson.

Plan View

(Show a minimum of three reference ties to durable physical objects, relevant monuments, and physical conditions that will enable recovery of the corner.)



I hereby certify that this land surveying document was prepared and the related survey work was performed by me or under my direct personal supervision and that I am a duly licensed Land Surveyor under the laws of the State of Iowa.

Lee O. Gallentine
 LEE O. GALLETINE, IS
 Date: Nov 4 2004 license number: 15745
 My license renewal date is December 31, 2004

Pages or sheets covered by this set: 1

List Corners to be Indexed			
Corners	Section	Twp	Range
W 1/4 Cor.	31	T94N	R14W