

PREPARED BY: BRIAN J. DIEHL LS 13644 10 SUMAC, MASON CITY, IOWA 50401 -- (641) 512-8004

SISI 9-90

**UNITED STATES PUBLIC LAND SURVEY CORNER CERTIFICATE**

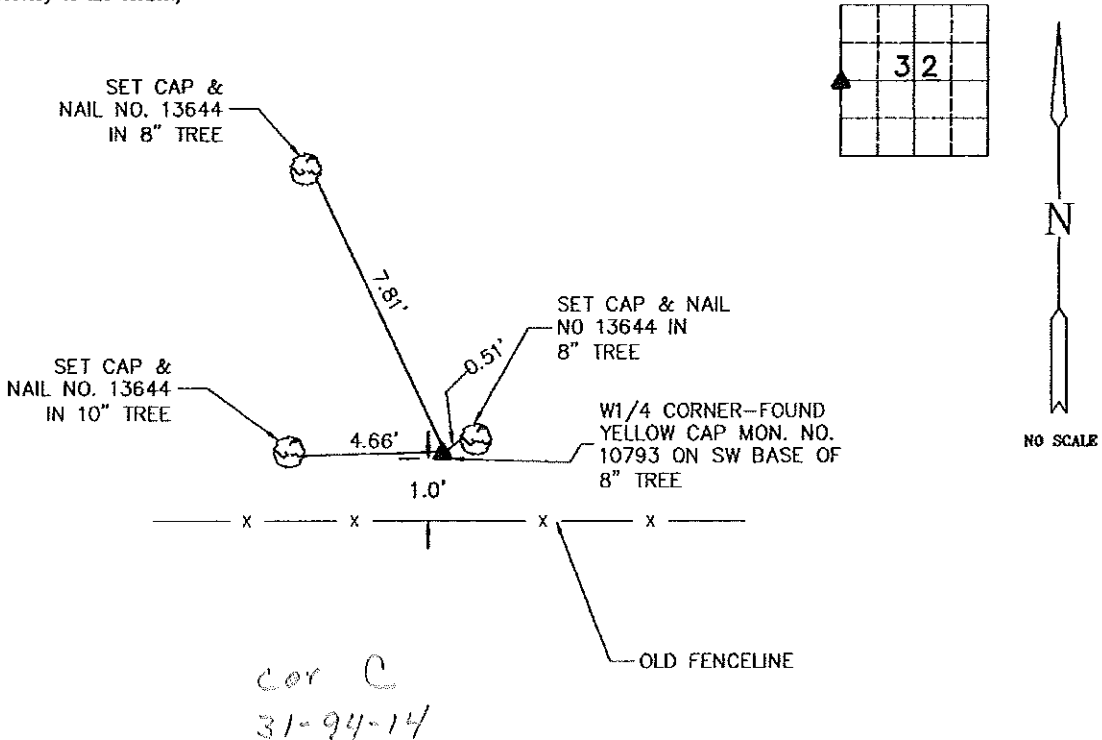
Land Survey Monuments Situated in Section 32, Township 94N, Range 14W, of the Fifth Principle Meridian, CHICKASAW County, Iowa  
 Previously Recorded in NO RECORD CERTIFICATE in County Recorder's Office

(Show reason for preparing this certificate, the evidence and detailed procedures used in establishing the corner positions and monumentation found or placed.)

Monument Description and Remarks: W1/4 CORNER - FOUND YELLOW CAPPED MON. L.S. NO 10793 ON WEST BASE OF 8" TREE PER PLAT OF SURVEY FILED FEBRUARY 14, 1992 IN BOOK 148 PG 423.

**PLAN-VIEW**

(Show a minimum of three reference ties to durable physical objects, relevant monuments and physical conditions that will enable recovery of the corner.)



cor C  
31-94-14

Corners	List Corners To Be Indexed		
	Section	Twp	Range
W1/4	32	94	14

**BRIAN J. DIEHL, P.L.S.**  
**LAND SURVEYING SERVICES**  
 10 SUMAC  
 MASON CITY, IA 50401  
 641-512-8004



I hereby certify that this land surveying document was prepared and the related survey work was performed by me or under my direct personal supervision and that I am a duly Licensed Land Surveyor under the laws of the State of Iowa.

Brian J. Diehl  
 License number 13644  
 My license renewal date is December 31, 2013