

RECORDER'S OFFICE
CHICKASAW COUNTY, IOWA

See #1100
2004 MAY 6 AM 8 32

CINDY MESSERSMITH
COUNTY RECORDER

STEVE BUSSE P.O. BOX 241 508 ELM STREET ALLISON, IOWA 50602 (319) 267-2519

UNITED STATES PUBLIC LAND SURVEY CORNER CERTIFICATE

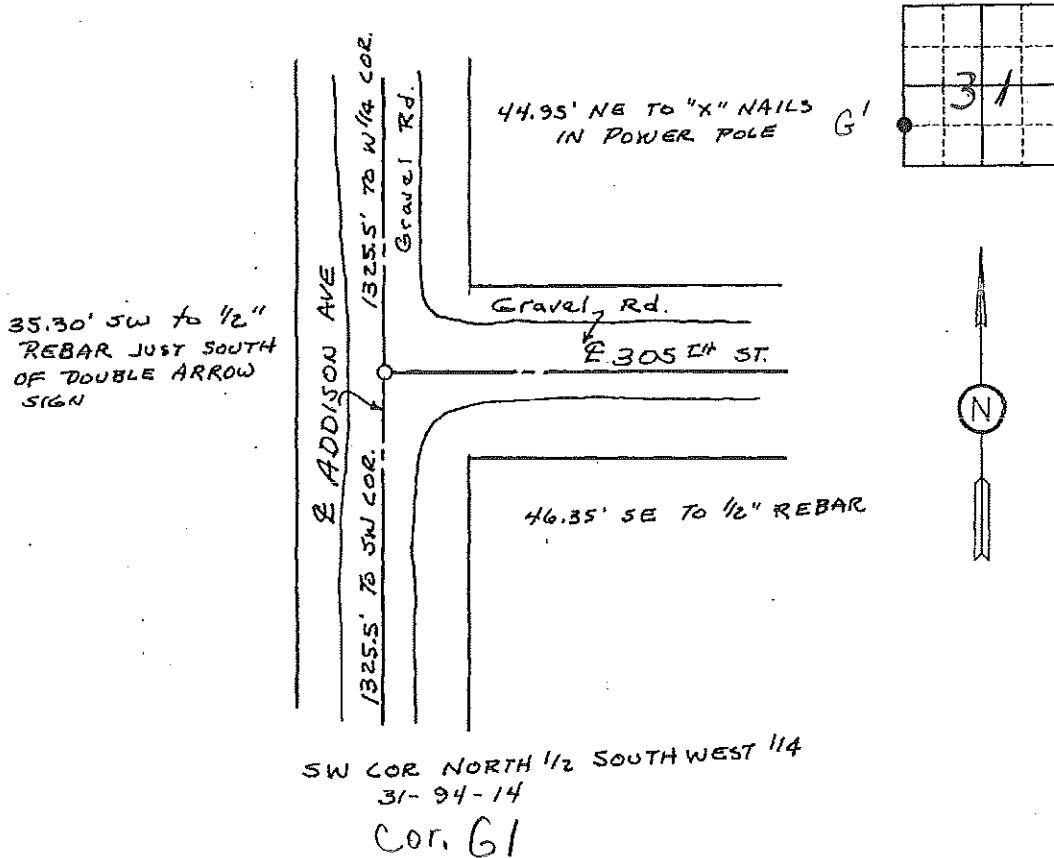
Land Survey Monuments situated in Section: 31 Township: 94 NORTH
Range: 14 WEST Of the Fifth Principal Meridian, Chickasaw Co., Iowa.
Previously recorded in N/A In County Recorder's Office.

(Show reason for preparing this certificate, the evidence and detailed procedures used in establishing the corner positions and monumentation found or placed.)

Monument Description and Remarks: Used corner for survey in N 1/2 SW 1/4 section 31. Set 1/2" rebar 24" long with yellow plastic cap on line between SW cor. section and W 1/4 cor. section. Set at split of distance between the 2 corners. No monument of record at this corner.

PLAN - VIEW

(Show a minimum of three reference ties to durable physical objects, relevant monuments and physical conditions that will enable recovery of the corner.)



I hereby certify that this land surveying document was prepared and the related survey work was performed by me or under my direct personal supervision and that I am a duly licensed Land Surveyor under the laws of the State of Iowa.

Steve Busse 5/3/04
STEVE BUSSE DATE

License number 9018
My license is subject to renewal Dec 31, 2004

Pages or sheets covered by this seal: This sheet only

List Corners to be Indexed
Corners Section Twp. Range
SW COR. 31 94 14
N 1/2 SW 1/4 (CHICKASAW)
SE COR. 36 94 15
N 1/2 SE 1/4 (FLOYD)