

2006-0087
1-10-2006 @ 9:30 AM

Jeffrey P. Helland, 1107 Technology Parkway, Cedar Falls, Iowa 50613-6951, (319)-266-0161

UNITED STATES PUBLIC LAND SURVEY CORNER CERTIFICATE OF

LAND SURVEY MONUMENTS SITUATED IN SECTION NO. 31, TOWNSHIP NO. 94 NORTH, RANGE NO. 14 WEST OF THE FIFTH PRINCIPAL MERIDIAN, CHICKASAW COUNTY, IOWA.

PREVIOUSLY RECORDED IN _____

(SHOW REASON FOR PREPARING THIS CERTIFICATE, THE EVIDENCE AND DETAILED PROCEDURES USED IN ESTABLISHING THE CORNER POSITIONS AND MONUMENTATION FOUND OR PLACED.)

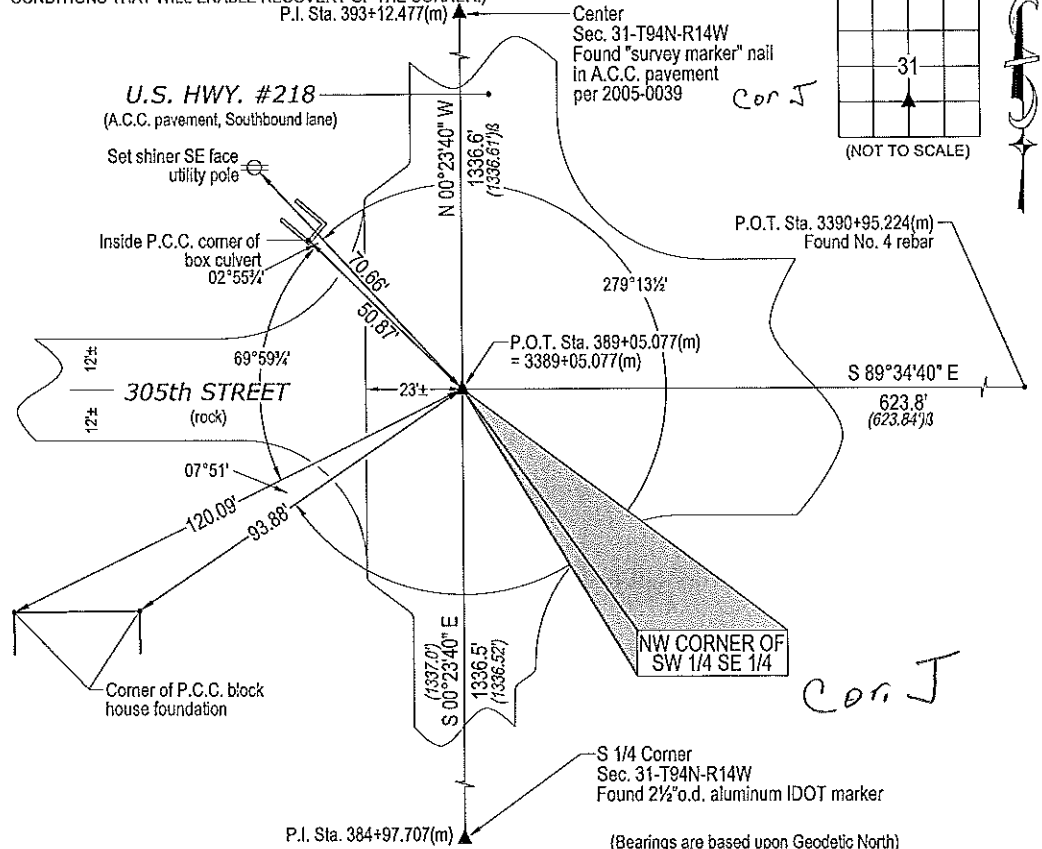
MONUMENT DESCRIPTION AND REMARKS:

No USPLSCC on file. Survey completed in the S 1/2 SE 1/4 of Sec. 31-T94N-T14W.

→ NW CORNER OF SW 1/4 SE 1/4: No Chickasaw County Engineer reference ties available. Plat of Survey dated 5/3/2004 recorded in 2004-1022 by Steve Busse #9018 calls for (nail set in pavement). IDOT road plans Project #NHS-218-8(43)--19-09 indicate corner as being established. Called for nail has been overlaid w/A.C.C. pavement. Set "mag" nail in A.C.C. pavement on a line between the S 1/4 Corner and the Center of Sec. 31-94N-R14W at prorated distance per said IDOT road plans.

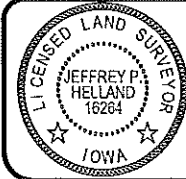
PLAN VIEW

(SHOW A MINIMUM OF THREE REFERENCE TIES TO DURABLE PHYSICAL OBJECTS, RELEVANT MONUMENTS AND PHYSICAL CONDITIONS THAT WILL ENABLE RECOVERY OF THE CORNER.)



HES HELLAND ENGINEERING & SURVEYING, LTD.
1107 Technology Parkway
Cedar Falls, Iowa 50613-6951
(319)-266-0161

shiner = 8d nail & 1 15/16" Ø metal shiner
OPC = Plastic cap (O=orange, R=red, Y=yellow)
(00) Recorded As File Name: 05-330c5.dwg



I hereby certify that this land surveying document was prepared and the related survey work was performed by me or under my direct personal supervision and that I am a duly licensed Land Surveyor under the laws of the State of Iowa.
Jeffrey P. Helland 1/4/06
Jeffrey P. Helland
License Number 16264
My license renewal date is December 31, 2007.
All pages or sheets are covered by this seal except:

LIST CORNERS TO BE INDEXED			
CORNER	SECTION	TOWNSHIP	RANGE
NW CORNER SW 1/4 SE 1/4	31	94N	14W

En