

Prepared By: Ryland R. Benzing, P.L.S. #22572 Benzing Surveying, LLC
 808 5th Ave. SW Waukon, Iowa 52172 Phone: (563) 568-2136

UNITED STATES PUBLIC LAND SURVEY CORNER CERTIFICATE

OF

Land Survey Monuments situated in Section 32, Township 94 North, Range 14 West, of the Fifth Principal Meridian, Chickasaw County, Iowa.
 Previously recorded in 1) (No Record) 2) (No Record) in County Recorder's Office.
 (book, page, document number, etc.)

(Show reason for preparing this certificate, the evidence and detailed procedures used in establishing the corner positions and monumentation found or placed.)

Monument Description and Remarks:

1) West Southwest Eighth Corner Section 32

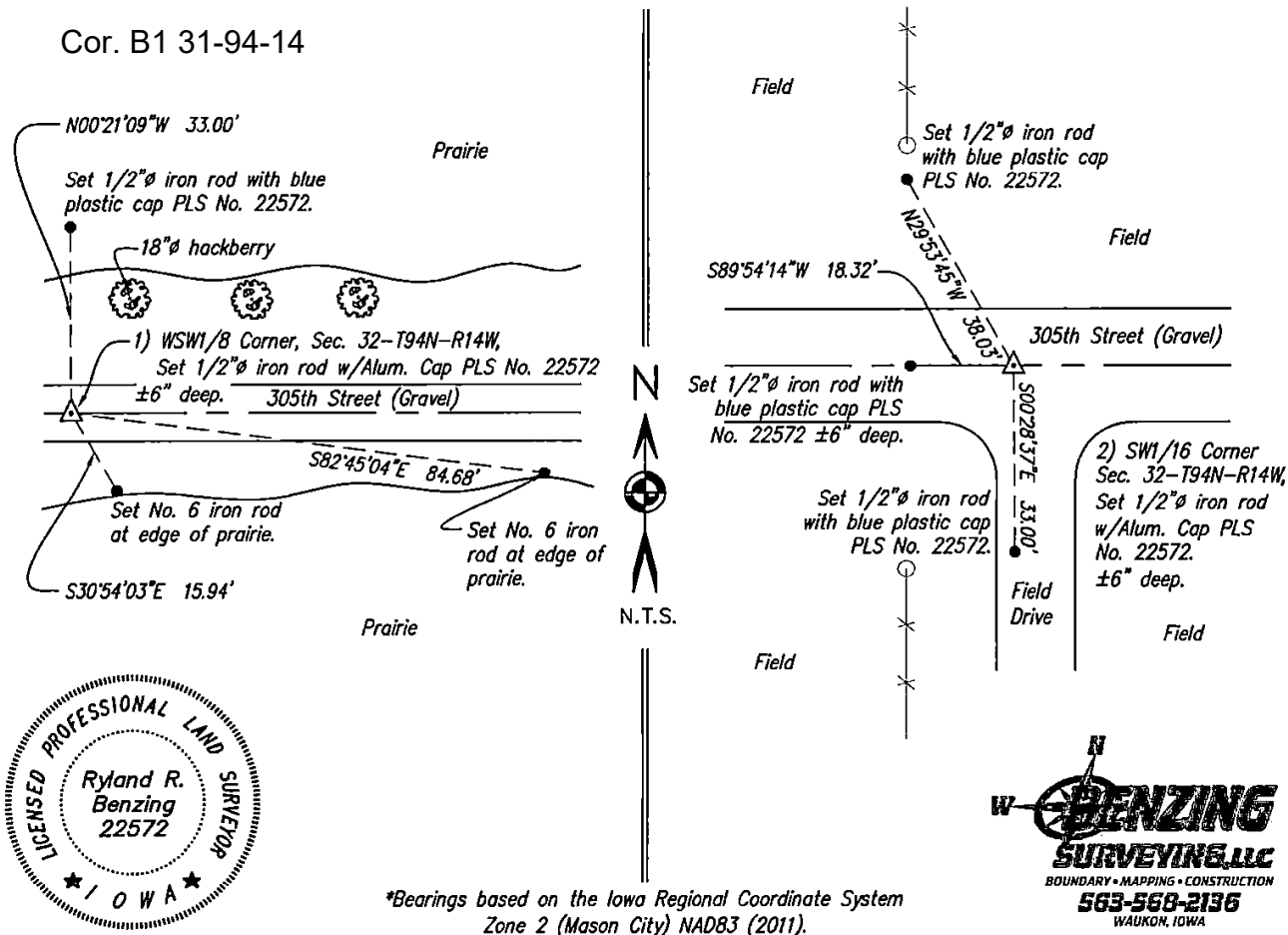
Computed a location at the midpoint of the west line of the SW1/4 of Section 32. Searched a 15' radius area with the magnetic locator, but found nothing. This location fit well with the existing east-west county road. Set 1/2" iron rod with aluminum cap PLS No. 22572 ±6" deep at the computed location.

2) Southwest Sixteenth Corner Section 32

Computed a location at the intersection of the 1/4-1/4 lines in the SW1/4 of Section 32. searched a 15' radius area with the magnetic locator, but found nothing. This location fit well with the existing east-west county road. Set 1/2" iron rod with aluminum cap PLS No. 22572 ±6" deep at the computed location.

PLAN - VIEW

(Show a minimum of three reference ties to durable physical objects, relevant monuments and physical conditions that will enable recovery of the corner.)



*Bearings based on the Iowa Regional Coordinate System Zone 2 (Mason City) NAD83 (2011).

I hereby certify that this land surveying document was prepared and the related survey work was performed by me or under my direct personal supervision and that I am a duly licensed Professional Land Surveyor under the laws of the State of Iowa.

Ryland R. Benzing Date: 5.19.22
 Ryland R. Benzing, PLS No. 22572
 My license renewal date is December 31, 2022
 Pages or sheets covered by this seal: 1 of 1

Corner(s) to be Indexed			
Corner	Section	Twp	Range
WSW1/8 Cor.	32	94N	14W
SW1/16 Cor.	32	94N	14W

