

2006-0086
1-10-06 @ 9:29 AM

Jeffrey P. Helland, 1107 Technology Parkway, Cedar Falls, Iowa 50613-6951, (319)-266-0161

UNITED STATES PUBLIC LAND SURVEY CORNER CERTIFICATE OF

LAND SURVEY MONUMENTS SITUATED IN SECTION NO. 31, TOWNSHIP NO. 94 NORTH, RANGE NO. 14 WEST OF THE FIFTH PRINCIPAL MERIDIAN, CHICKASAW COUNTY, IOWA.
PREVIOUSLY RECORDED IN _____

(SHOW REASON FOR PREPARING THIS CERTIFICATE, THE EVIDENCE AND DETAILED PROCEDURES USED IN ESTABLISHING THE CORNER POSITIONS AND MONUMENTATION FOUND OR PLACED.)

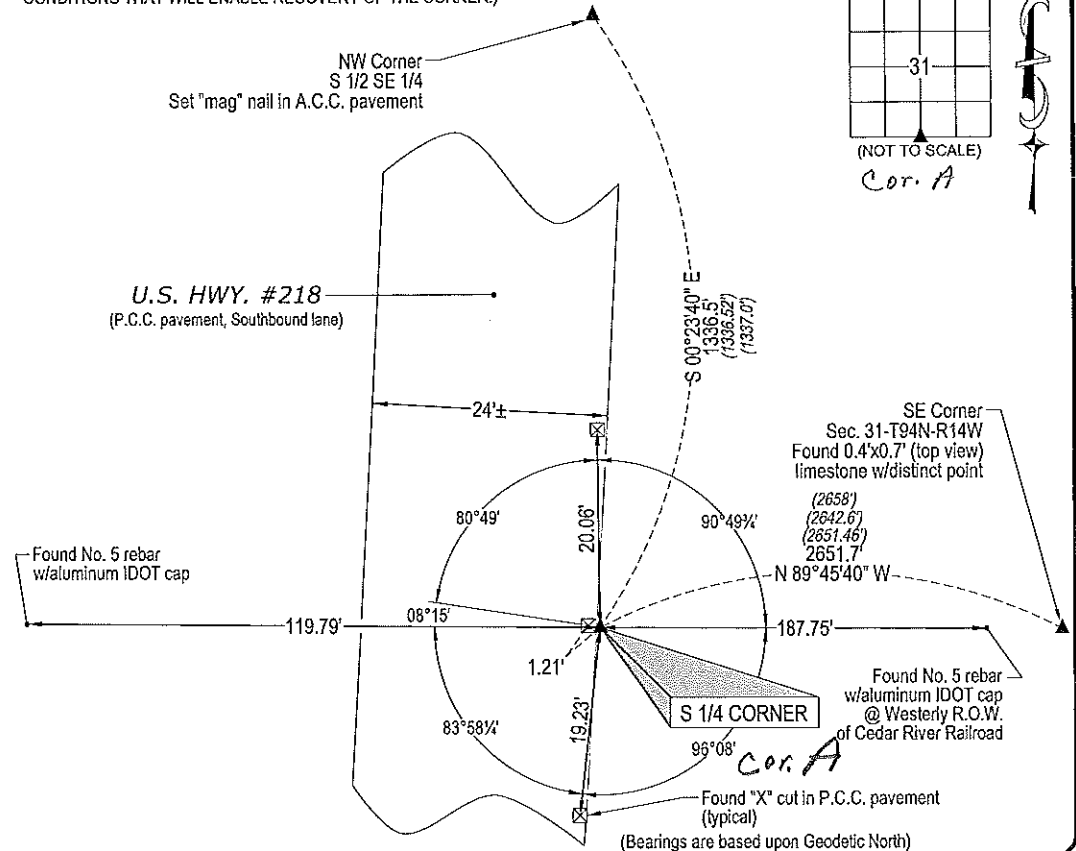
MONUMENT DESCRIPTION AND REMARKS:

No USPLSCC on file. Survey completed in the S 1/2 SE 1/4 of Sec. 31-T94N-T14W.

→ S 1/4 CORNER: All Chickasaw and Bremer County Engineer reference ties obliterated by recent construction on U.S. Highway #218. Bremer County Plat Book A Page 87 dated 1911 calls for {stone}. Plats of Surveys dated 12/18/1991 recorded in Book 148 Pages 374 & 375 (Chickasaw Co.) by Terry D. Van Laningham #10793 calls for {Al. Core (I.D.O.T.)}. Plat of Survey dated 5/3/2004 recorded in 2004-1022 (Chickasaw Co.) by Steve Busse #9018 calls for {Set nail by ties}. Found 2 1/2" o.d. aluminum marker labeled "LAND CORNER IOWA HWY. DIV., DO NOT DISTURB" 0.35' East of Easterly edge P.C.C. pavement and 0.35' below P.C.C. pavement, corresponding to position per IDOT Road Plans Project #NHS-218-8(43)-19-09.

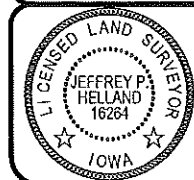
PLAN VIEW

(SHOW A MINIMUM OF THREE REFERENCE TIES TO DURABLE PHYSICAL OBJECTS, RELEVANT MONUMENTS AND PHYSICAL CONDITIONS THAT WILL ENABLE RECOVERY OF THE CORNER.)



HES HELLAND ENGINEERING & SURVEYING, LTD.
1107 Technology Parkway
Cedar Falls, Iowa 50613-6951
(319)-266-0161

shiner = 8d nail & 1 15/16" metal shiner
OPC = Plastic cap (O=orange, R=red, Y=yellow)
(00') Recorded As File Name: 05-330c2.dwg



I hereby certify that this land surveying document was prepared and the related survey work was performed by me or under my direct personal supervision and that I am a duly licensed Land Surveyor under the laws of the State of Iowa.
Jeffrey P. Helland 1/4/06
Jeffrey P. Helland
License Number 16264
My license renewal date is December 31, 2007.
All pages or sheets are covered by this seal except _____

LIST CORNERS TO BE INDEXED			
CORNER	SECTION	TOWNSHIP	RANGE
S 1/4 CORNER	31	94N	14W