

PREPARED BY: BRIAN J. DIEHL LS 13644 10 SUMAC MASON CITY, IOWA 50401 -- (641) 512-8004

SLSI 9-90

**UNITED STATES PUBLIC LAND SURVEY CORNER CERTIFICATE**

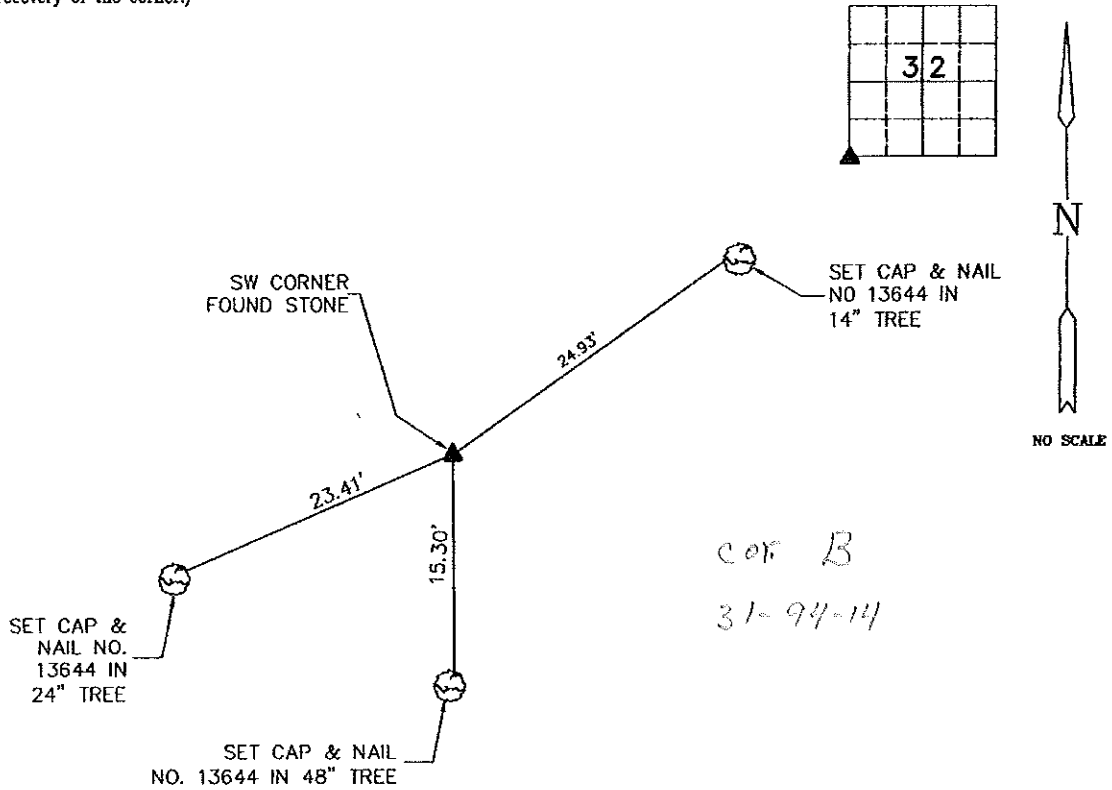
Land Survey Monuments Situated in Section 32, Township 94N, Range 14W, of the Fifth Principle Meridian, CHICKASAW County, Iowa  
 Previously Recorded in NO RECORD CERTIFICATE in County Recorder's Office  
(book, page, document number, etc.)

(Show reason for preparing this certificate, the evidence and detailed procedures used in establishing the corner positions and monumentation found or placed.)

Monument Description and Remarks: SW CORNER - FOUND STONE (FLUSH) FOUND YELLOW CAPPED ROD L.S. 10393 0.75' SW OF STONE. CUT "X" ON STONE. MONUMENT MATCHES PLAT OF SURVEY FILED FEBRUARY 14, 1992 IN BOOK 148 PAGE 423.

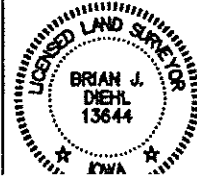
**PLAN-VIEW**

(Show a minimum of three reference ties to durable physical objects, relevant monuments and physical conditions that will enable recovery of the corner.)



Corners	List Corners To Be Indexed		
	Section	Twp	Range
SW	32	94	14

**BRIAN J. DIEHL, P.L.S.**  
 LAND SURVEYING SERVICES  
 10 SUMAC  
 MASON CITY, IA 50401  
 641-512-8004



I hereby certify that this land surveying document was prepared and the related survey work was performed by me or under my direct personal supervision and that I am a duly Licensed Land Surveyor under the laws of the State of Iowa.  
 Brian J. Diehl  
 License number 13644.  
 My license renewal date is December 31, 2013.  
 Date: June 8, 2012

2006-0085  
1-10-06 @ 9:27 AM

Jeffrey P. Helland, 1107 Technology Parkway, Cedar Falls, Iowa 50613-6951, (319)-266-0161

## UNITED STATES PUBLIC LAND SURVEY CORNER CERTIFICATE OF

LAND SURVEY MONUMENTS SITUATED IN SECTION NO. 31, TOWNSHIP NO. 94 NORTH, RANGE NO. 14 WEST OF THE FIFTH PRINCIPAL MERIDIAN, CHICKASAW COUNTY, IOWA.

PREVIOUSLY RECORDED IN \_\_\_\_\_

(SHOW REASON FOR PREPARING THIS CERTIFICATE, THE EVIDENCE AND DETAILED PROCEDURES USED IN ESTABLISHING THE CORNER POSITIONS AND MONUMENTATION FOUND OR PLACED.)

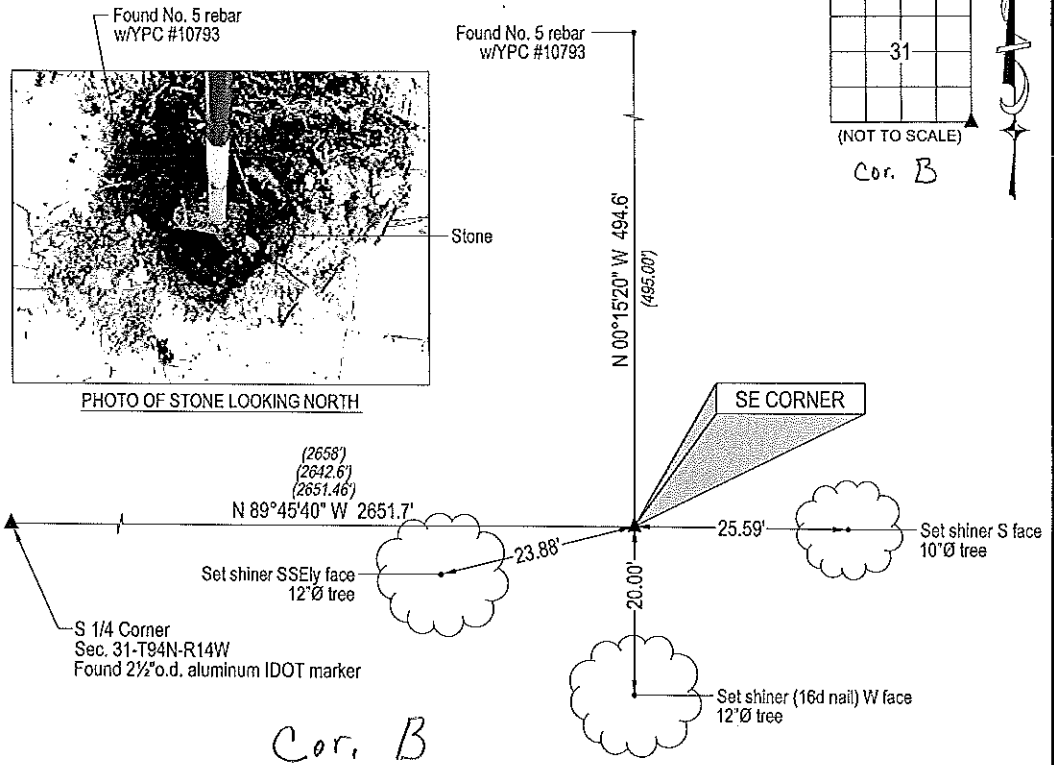
MONUMENT DESCRIPTION AND REMARKS:

No USPLSCC on file. Survey completed in the S 1/2 SE 1/4 of Sec. 31-T94N-T14W.

→ SE CORNER: No Chickasaw nor Bremer County Engineer reference ties available. Bremer County Plat Book A Page 87 dated 1911 calls for {old fence corner}. Plats of Surveys dated 12/18/1991 recorded in Book 148 Pages 374 & 375 (Chickasaw Co.) by Terry D. Van Laningham #10793 calls for {rebar w/cap S. side of stone}. Found 0.7'x0.4' (top view) limestone w/distinct point NE of No. 5 rebar w/YPC #10793. Utilized high point of stone as the SE Corner. Point used is 0.1' North & 0.45' East (0.53' hypotenuse distance) of said No. 5 rebar w/YPC #10793.

### PLAN VIEW

(SHOW A MINIMUM OF THREE REFERENCE TIES TO DURABLE PHYSICAL OBJECTS, RELEVANT MONUMENTS AND PHYSICAL CONDITIONS THAT WILL ENABLE RECOVERY OF THE CORNER.)

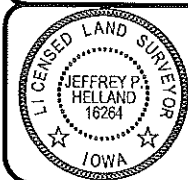


(Bearings are based upon Geodetic North)

**HES** HELLAND ENGINEERING & SURVEYING, LTD.  
1107 Technology Parkway  
Cedar Falls, Iowa 50613-6951  
(319)-266-0161

shiner = 8d nail & 1 15/16" metal shiner  
OPC = Plastic cap (O=orange, R=red, Y=yellow)

(00) Recorded As File Name: 05-330c1.dwg



I hereby certify that this land surveying document was prepared and the related survey work was performed by me or under my direct personal supervision and that I am a duly licensed Land Surveyor under the laws of the State of Iowa.

*Jeffrey P. Helland 1/4/06*  
Jeffrey P. Helland  
License Number 16264  
My license renewal date is December 31, 2007.  
All pages or sheets are covered by this seal except

LIST CORNERS TO BE INDEXED			
CORNER	SECTION	TOWNSHIP	RANGE
SE CORNER	31	94N	14W

E