

Chickasaw Co. Recorder  
 Cindy Messersmith  
**Fee Book 2008-0321**  
 02/21/2008 @ 12:18 PM  
 SCC SEC COR CERT  
 Book: Page: # Pages: 1  
 Total Fees: \$7.00

Section 30-94-14  
 As ref. to in  
 Engr. Fee Book

Herold - Recks Surveying, 25 1/2 East Main Street, Suite 204, New Hampton, IA 50659, Ph. 641-394-2725

**UNITED STATES PUBLIC LAND SURVEY CORNER CERTIFICATE**

Land Survey Monuments situated in:  
 Section <sup>30</sup> 31, Township 94 North, Range 14 West of the Fifth Principal Meridian,  
Chickasaw County, Iowa. Previously recorded in 1.) Doc # 2005-0037  
In County Recorder's Office. 2.) Doc# 2005-0039

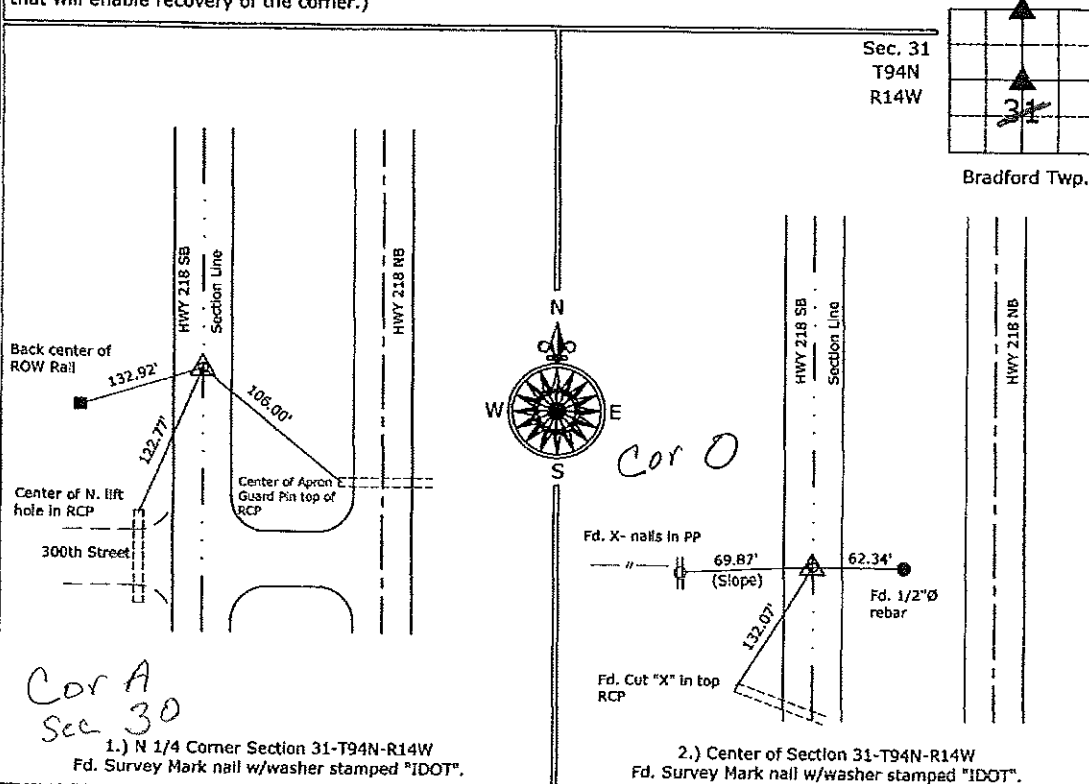
(Show reason for preparing this certificate, the evidence and detailed procedures used in establishing the corner positions and monumentation found or placed.)

**Monument Description and Remarks:**

- 1.) N 1/4 Corner Section 31-T94N-R14W: Fd. Survey Mark nail w/washer stamped "IDOT". Previous monument was covered by an HMA overlay project.
- 2.) Center of Section 31-T94N-R14W: Fd. Survey Mark nail w/washer stamped "IDOT". Previous monument was covered by an HMA overlay project.

**PLAN - VIEW**

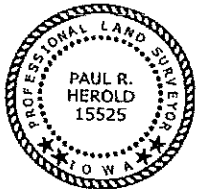
(Show a minimum of three reference ties to durable physical objects, relevant monuments and physical conditions that will enable recovery of the corner.)



Cor A  
 Sec 30

1.) N 1/4 Corner Section 31-T94N-R14W  
 Fd. Survey Mark nail w/washer stamped "IDOT".

2.) Center of Section 31-T94N-R14W  
 Fd. Survey Mark nail w/washer stamped "IDOT".



I hereby certify that this land surveying document was prepared and the related survey work was performed by me or under my direct personal supervision and that I am a duly licensed Land Surveyor under the laws of the State of Iowa.

*Paul R. Herold* 2-19-08  
 Paul R. Herold Date:

License number 15525  
 My license renewal date is December 31, 2008.  
 Sheets covered by this seal: Individual sheet only

List Corners to be Indexed			
Corners	Section	Twp.	Range
N 1/4	31	94	14
CTR	31	94	14

Project Number: 2007-136  
 FB: Chickasaw County 1, Pg. 59

File: S:\\_Projects\2007\2007-136\wsg\2007-136.dwg, 2/15/2008 1:55:22 PM

Section 30-94-14  
 As ref. to in  
 Engr Trc Book

Filed 2005-0037  
 2005 JAN 7 8:56 AM

Lee O. Gallentine LS, Ryken Engineering, 711 Park Avenue, Ackley, IA. 50601 - Ph. 641-847-3273 - Fax 641-847-2303

### UNITED STATES PUBLIC LAND SURVEY CORNER CERTIFICATE

Land Survey Monuments situated in Section 31 30 Township 94 North, Range 14 West, of the Fifth Principal Meridian, Chickasaw County, Iowa,  
 Previously recorded in Not Applicable in County Recorder's Office

(Show reason for preparing this certificate, the evidence and detailed procedures used in establishing the corner positions and monumentation found or set.)

#### Monument Description and Remarks:

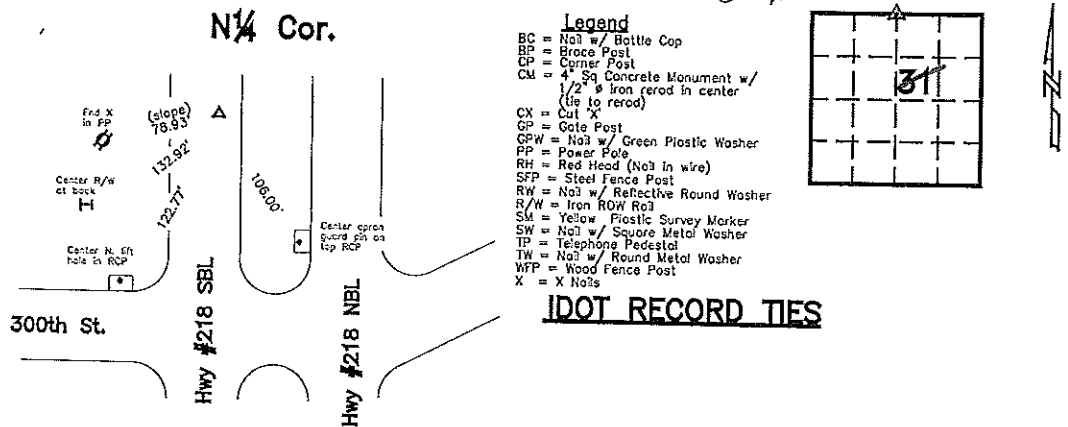
N 1/4 Cor - Co Rec's Irregular Plat Bk 2 Pg 182 indicates that corner is monumented with 'Limestone'. Co Rec's Bk 156 Pg 244 and Inst #2004-1022 indicate that corner is monumented with 'Fd nail in paving'. Co Rec's Inst #2001-1789 indicates that corner is monumented with 'Found Hinge Nail'. IDOT records indicate that corner is monumented with 'Fd hinge nail' on '8-25-97' with ties as shown below. Co Engr's records do not indicate that corner is monumented.

Searched area with metal detector and found broken stubby nail flush in centerline of southbound lane of ACC road N-S. Monument found matches that of record and record tie is within reason. Therefore, removed stubby nail and set 'Survey Mark' nail in its place to perpetuate monumentation and used it as the correct corner. All ties are plumb distance unless indicated otherwise.

This certificate is being prepared because there are no certificates on file for this corner and this corner was used for a survey in this section for Wendell E and Lillian D Lampson.

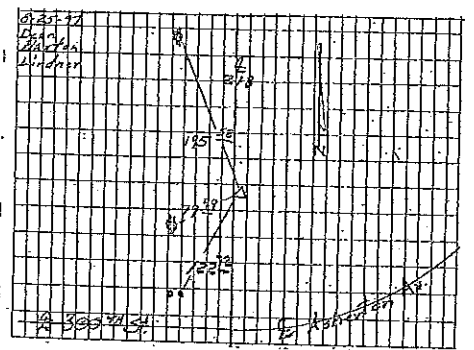
#### Plan View

(Show a minimum of three reference ties to durable physical objects, relevant monuments, and physical conditions that will enable recovery of the corner.)



Cor A  
 30-94-14

A = N 1/4 Cor. Sec 31-94-14
FD Hinge nail, 2 1/2" E. of
Sta. 2253+24.15
1 1/2" nails power pole
2 1/2" nails power pole
3 1/2" nails sign post
F.O.M.



I hereby certify that this land surveying document was prepared and the related survey work was performed by me or under my direct personal supervision and that I am a duly licensed Land Surveyor under the laws of the State of Iowa.

*Lee O. Gallentine*  
 LEE O. GALLETINE, LS  
 Date: Nov 4 2004 License number: 15745  
 My license renewal date is December 31, 2004

List Corners to be Indexed			
Corners	Section	Twp	Range
N 1/4 Cor.	31	T94N	R14W