

Chickasaw Co. Recorder
 Cindy Messersmith
Fee Book 2013-1270
 08/02/2013 @0325PM
 SCC SEC COR CERT
 Book: Page: # Pages: 1
 Total Fees: \$7.00

UNITED STATES PUBLIC LAND SURVEY CORNER CERTIFICATE
 OF 30

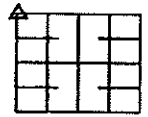
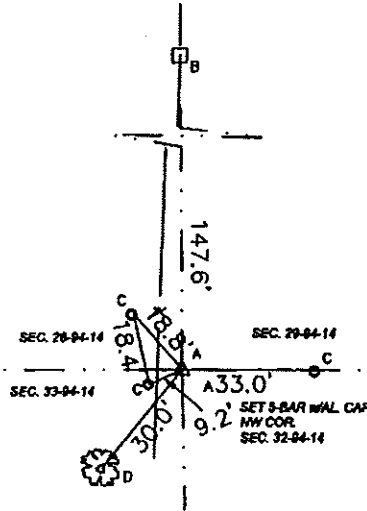
Survey Monuments situated in Section 32, Township 94, Range 14 W
 of the Fifth Principal Meridian, CHICKASAW County, Iowa.
 Previously recorded in NONE of County Recorder's Office.
 (book, page, document number, etc.)

(Show reason for preparing this certificate, the evidence and detailed procedures used in establishing the corner positions and monumentation found or placed.)

- Monument Description and Remarks:
- A - SET 5 BAR w/ AL CAP 10793
 - B - WOODEN FE. COR. POST
 - C - SET4 BAR w/o CAP
 - D - SET TAG IN 24" MAPLE TREE

PLAN VIEW

(Show a minimum of three reference ties to durable physical objects, relevant monuments and physical conditions that will enable recovery of the corner.)



SECTION 32

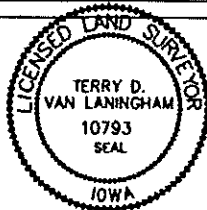


NW CORNER
 32 - 94 - 14

I hereby certify that this land surveying document was prepared and the related survey work was performed by me or under my direct personal supervision and that I am a duly licensed Land Surveyor under the laws of the State of Iowa.

Terry D. Van Laningham *July 2, 2013*
 Terry D. Van Laningham, PLS Date:

License number 10793
 My registration renewal date is December 31, 2013.
 Pages or sheets covered by this seal:
THIS SHEET ONLY



List Corners to be indexed

Corners	Section	Township	Range
NW CORNER	32	94 N	14 W

GEODETIC POSITION

GRID N: 3800412.094
 GRID E: 5179706.511
 LATITUDE: 42°55'18.095"
 LONGITUDE: -92°32'06.174"
 STATE PLANE 10NORTH NAD 83 GEIOD 09
 (OBTAINED BY RTK SURVEY USING 10RTN)

TERRY D. VAN LANINGHAM, PLS. INC.
 100 HND STREET, SV WAVERLY, IOWA (515) 368 - 0001