

Prepared By: Ryland R. Benzing, P.L.S. #22572 Benzing Surveying, LLC
 808 5th Ave. SW Waukon, Iowa 52172 Phone: (563) 568-2136

UNITED STATES PUBLIC LAND SURVEY CORNER CERTIFICATE

OF

Land Survey Monuments situated in Section 32, Township 94 North, Range 14 West, of the Fifth Principal Meridian, Chickasaw County, Iowa.

Previously recorded in 1) (No Record) 2) (No Record) in County Recorder's Office.
 (book, page, document number, etc.)

(Show reason for preparing this certificate, the evidence and detailed procedures used in establishing the corner positions and monumentation found or placed.)

Monument Description and Remarks:

1) Southeast Corner Section 32

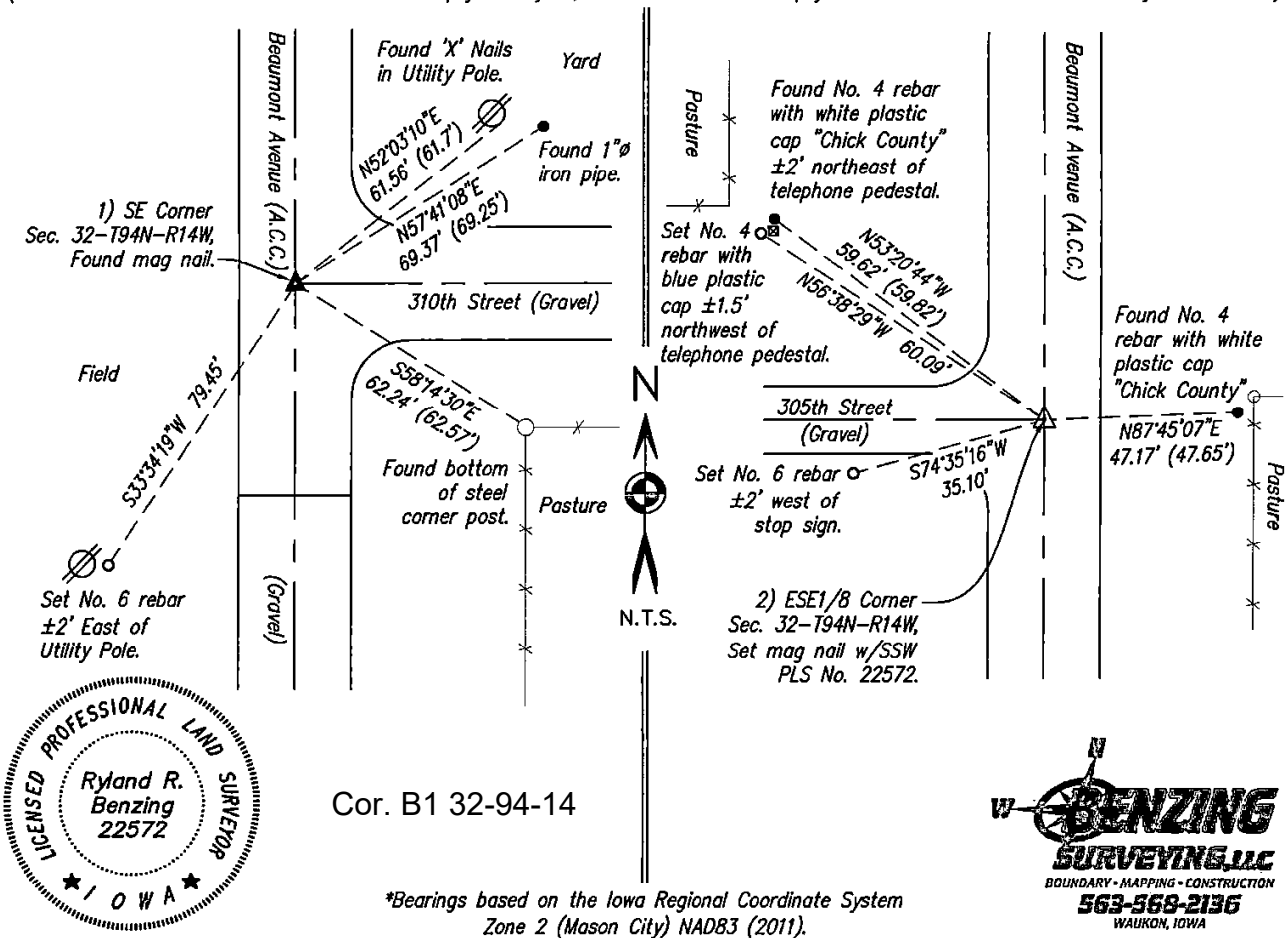
Found mag nail at the location as shown in field note ties found in the Chickasaw County Engineer's Office. These notes show a Iron Pin was set midway between fences on 7-26-1956 and has been re-tied multiple times since. The latest stating a PK had been set in Asphalt mat August of 2002. We found three of the county ties that fit reasonably well and established one additional tie. We accepted this location as the monument for the corner.

2) East-Southeast Eighth Corner Section 32

Computed a location at the midpoint of the east line of the SE1/4 or Section 32. Searched 15' radius area with a magnetic locator, but found nothing. We were able to locate two ties from the field note ties (dated 8-2002) found in the Chickasaw County Engineer's Office. These ties fit reasonably well, but the corner monument in the notes was labeled 'for construction only' We set a mag nail with stainless steel washer PLS No. 22572 at the computed location.

PLAN - VIEW

(Show a minimum of three reference ties to durable physical objects, relevant monuments and physical conditions that will enable recovery of the corner.)



*Bearings based on the Iowa Regional Coordinate System
 Zone 2 (Mason City) NAD83 (2011).

I hereby certify that this land surveying document was prepared and the related survey work was performed by me or under my direct personal supervision and that I am a duly licensed Professional Land Surveyor under the laws of the State of Iowa.

Ryland R. Benzing Date: 5-19-22
 Ryland R. Benzing, PLS No. 22572
 My license renewal date is December 31, 2022
 Pages or sheets covered by this seal: 1 of 1

Corner(s) to be Indexed			
Corner	Section	Twp	Range
SE Cor.	32	94N	14W
ESE1/8 Cor.	32	94N	14W

