

PREPARED BY: BRIAN J. DIEHL LS 13644 10 SUMAC MASON CITY, IOWA 50401 — (641) 512-8004

SLSI 9-90

UNITED STATES PUBLIC LAND SURVEY CORNER CERTIFICATE

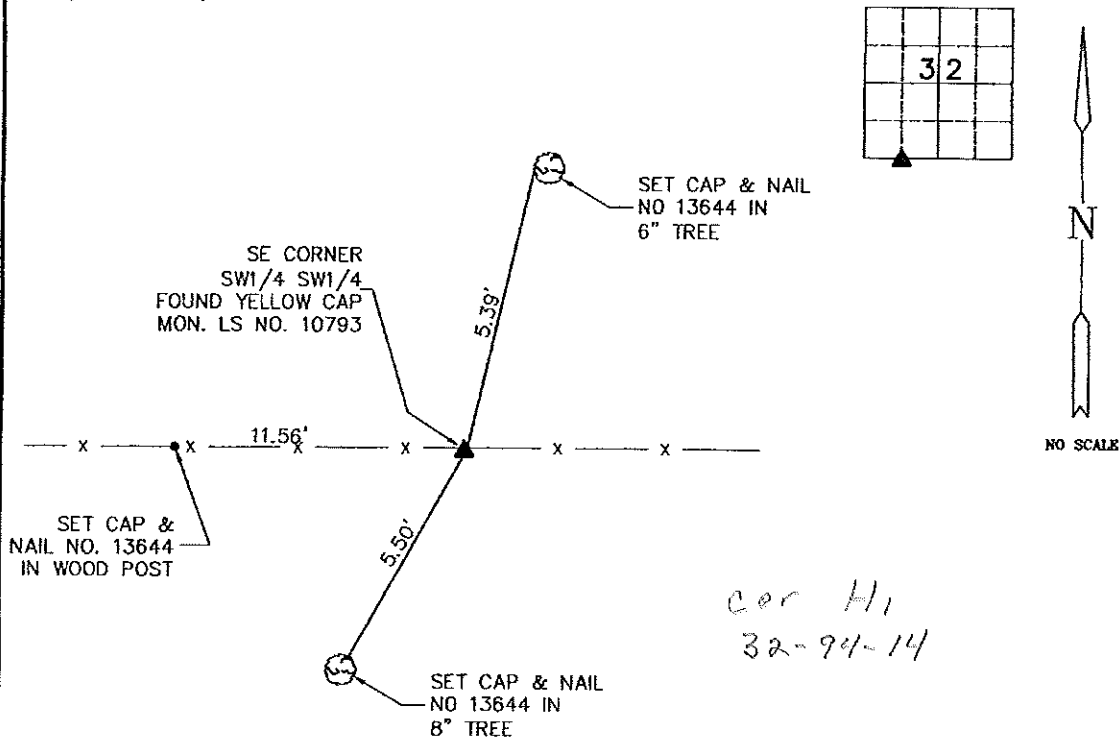
Land Survey Monuments Situated in Section 32, Township 94N, Range 14W, of the Fifth Principle Meridian, CHICKASAW County, Iowa
 Previously Recorded in NO RECORD CERTIFICATE in County Recorder's Office
(book, page, document number, etc.)

(Show reason for preparing this certificate, the evidence and detailed procedures used in establishing the corner positions and monumentation found or placed.)

Monument Description and Remarks: SE CORNER SW1/4 SW1/4 - FOUND YELLOW CAPPED MON. L.S. NO. 10793 PER PLAT OF SURVEY FILED FEBRUARY 14, 1992 IN BOOK 148 PG 243.

PLAN-VIEW

(Show a minimum of three reference ties to durable physical objects, relevant monuments and physical conditions that will enable recovery of the corner.)

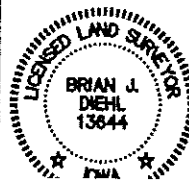


*Cor H1
32-94-14*

List Corners To Be Indexed			
Corners	Section	Twp	Range
SE CORNER	32	94	14
SW1/4 SW1/4			



BRIAN J. DIEHL, P.L.S.
LAND SURVEYING SERVICES
 10 SUMAC
 MASON CITY, IA 50401
 641-512-8004



I hereby certify that this land surveying document was prepared and the related survey work was performed by me or under my direct personal supervision and that I am a duly licensed Land Surveyor under the laws of the State of Iowa.
 Brian J. Diehl
 License number 13644.
 My license renewal date is December 31, 2013.