

TEKIPPE ENGINEERING, P.C., 128 South Vine Street, West Union, Iowa 52175 Phone (563) 422-5131

UNITED STATES PUBLIC LAND SURVEY CORNER CERTIFICATE

OF

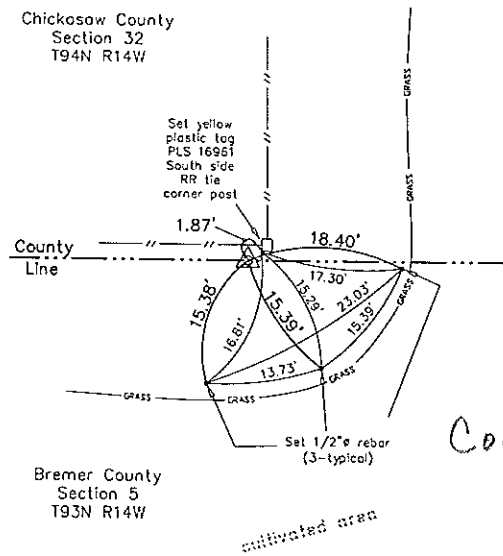
Land Survey Monuments situated in Section 32, Township 94 North, Range 14 West of the Fifth Principal Meridian, CHICKASAW County, Iowa. Previously recorded in none in County Recorder's Office. (book, page, document number, etc.)

(Show reason for preparing this certificate, the evidence and detailed procedures used in establishing the corner positions and monumentation found or placed.)

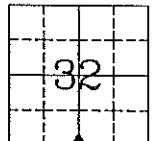
Monument Description and Remarks: S 1/4 CORNER SECTION 32 T94N R14W: Found 5/8"Ø rebar w/yellow plastic cap 10793 with information obtained from a Survey and Plat made by Terry Van Laningham recorded in the Bremer County Recorder's Office January 23, 1992 in Book 148, Page 374.

PLAN - VIEW

(Show a minimum of three reference ties to durable physical objects, relevant monuments and physical conditions that will enable recovery of the corner.)



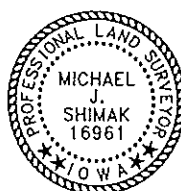
Sec. 32
T94N
R14W



Bradford Twp.



S 1/4 Corner Section 32 T94N R14W
Found 5/8"Ø rebar w/yellow plastic cap 10793



I hereby certify that this land surveying document was prepared and the related survey work was performed by me or under my direct personal supervision and that I am a duly licensed Land Surveyor under the laws of the State of Iowa.
Michael J. Shimak February 7, 2006
Michael J. Shimak Date
License number 16961
My license renewal date is December 31, 2007.
Sheets covered by this seal: individual

List Corners to be Indexed			
Corners	Section	Twp.	Range
S 1/4	32	94N	14W

Project Number 06017.LS
FB. 46L PG. 60-62

X:\Section Corners\Sec. 32\32-94-14w.dwg