

**UNITED STATES PUBLIC LAND SURVEY CORNER CERTIFICATE**  
**OF 29**

Survey Monuments situated in Section 32, Township 94, Range 14 W  
 of the Fifth Principal Meridian, **CHICKASAW** County, Iowa.

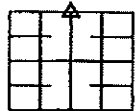
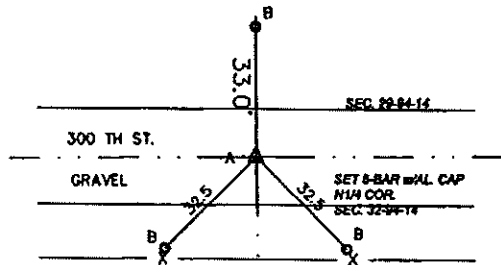
Previously recorded in NONE of County Recorder's Office.  
 (book, page, document number, etc.)

(Show reason for preparing this certificate, the evidence and detailed procedures used in establishing the corner positions and monumentation found or placed.)

Monument Description and Remarks:  
 A - SET 5 BAR w/ AL CAP 10793  
 B - SET 4 BAR w/o CAP

**PLAN VIEW**

(Show a minimum of three reference ties to durable physical objects, relevant monuments and physical conditions that will enable recovery of the corner.)



SECTION 32



cor A  
 29-94-14

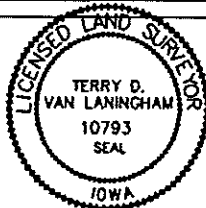
N1/4 CORNER  
 32 - 94 - 14

I hereby certify that this land surveying document was prepared and the related survey work was performed by me or under my direct personal supervision and that I am a duly licensed Land Surveyor under the laws of the State of Iowa.

*Terry D. Van Laningham* Date: *Aug 2, 2013*  
 Terry D. Van Laningham, PLS  
 License number 10793

My registration renewal date is December 31, 2013

Pages or sheets covered by this seal:  
 THIS SHEET ONLY



List Corners to be Indexed

Corners	Section	Township	Range
N1/4 CORNER	32	94 N	14 W

GEODEIC POSITION

GRID N: 3800434.618  
 GRID E: 5182353.655  
 LATITUDE: 42°55'18.018"  
 LONGITUDE: -92°31'30.594"  
 STATE PLANE IONORTH NAD 83 GEIOD 09  
 (OBTAINED BY RTK SURVEY USING IORTN)

**TERRY D. VAN LANINGHAM, PLS. INC.**  
 180 8RD STREET, SW WAVERLY, IOWA (319) 365 - 0001