

Prepared by & Return to: Herald - Reicks Surveying, 10 East Main Street, New Hampton, IA 50659, Ph. 641-394-2725

United States Public Land Survey Corner Certificate

Land Survey Monument situated in
 Section 34, Township 94 North, Range 14 West of the Fifth Principal Meridian, Chickasaw County, Iowa.
 Not on file in the County Recorder's office.

This certificate is being prepared in compliance with Iowa Code Chapter 355.11 because:

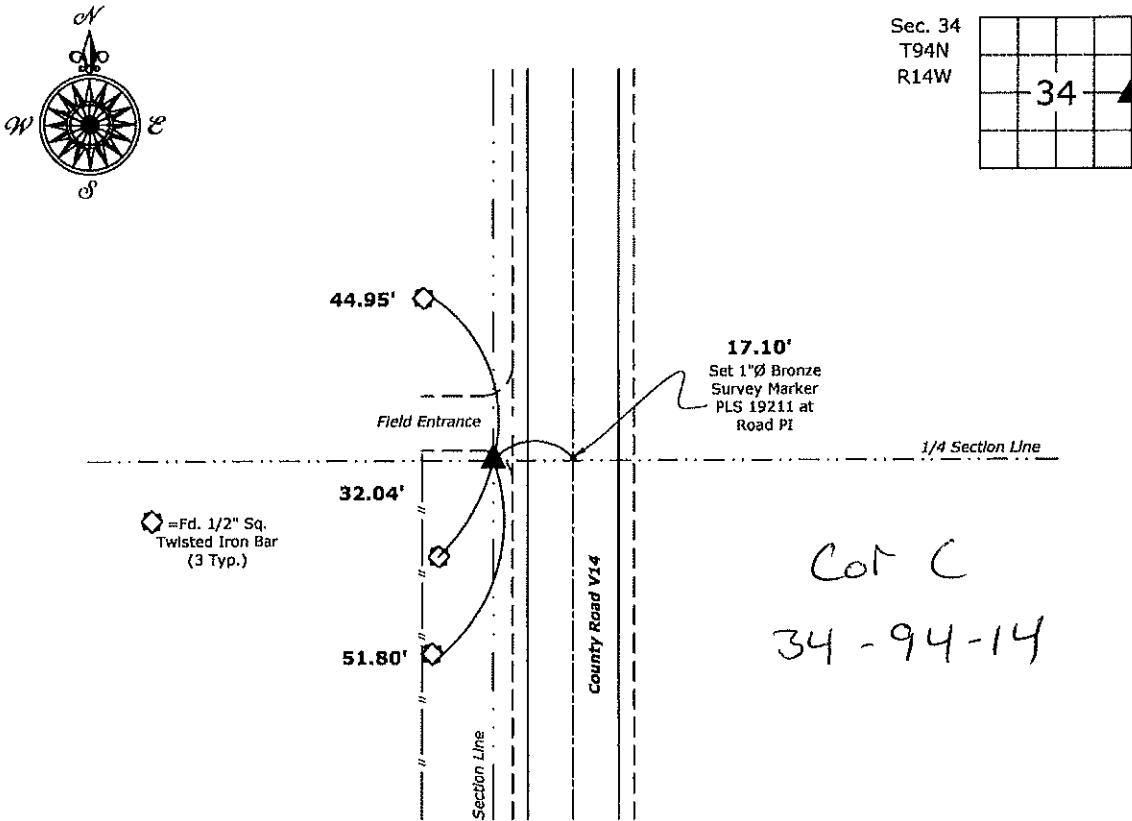
- There is no certificate on file for this corner.
- There are no longer three valid ties of record.
- There are changes to reference ties of record.
- There is change of monumentation of record.
- To clarify description of record monument (ties).

Monument Description and Remarks:

East 1/4 Corner: Found 1/2" rebar bent with information obtained from the County Engineer's office (Road Plans and As-Builts). Replaced 5/8"Ø rebar with aluminum cap PLS 19211. Corner was used in conjunction with Project No. FM-CO19(88)--55-19.

Plan View

(Show a minimum of three reference ties to durable physical objects, relevant monuments and physical conditions that will enable recovery of the corner.)



East 1/4 Corner of Section 34-94-14
 Fd. 1/2"Ø rebar bent
 Replaced with 5/8"Ø rebar with Aluminum Cap PLS 19211



I hereby certify that this land surveying document was prepared and the related survey work was performed by me or under my direct personal supervision and that I am a duly licensed Land Surveyor under the laws of the State of Iowa.

Kirk D. Reicks 11-20-18
 Kirk D. Reicks Date:

License number 19211
 My license renewal date is December 31, 2018.
 Sheets covered by this seal: Individual sheet only

List Corner to be Indexed			
Corner	Section	Twp.	Range
E 1/4	34	94	14

Project Number: 2018-805
 FB: Chickasaw 8, Pgs. 72

STEVE BUSSE P.O. BOX 241 508 ELM ST. ALLISON, IOWA 50602 319-267-2519

UNITED STATES PUBLIC LAND SURVEY CORNER CERTIFICATE OF

LAND SURVEY MONUMENTS SITUATED IN SECTION NO. 34, TOWNSHIP NO. 94 NORTH, RANGE NO. 13 WEST OF THE FIFTH PRINCIPAL MERIDIAN, CHICKASAW COUNTY, IOWA.
 PREVIOUSLY RECORDED IN N/A.

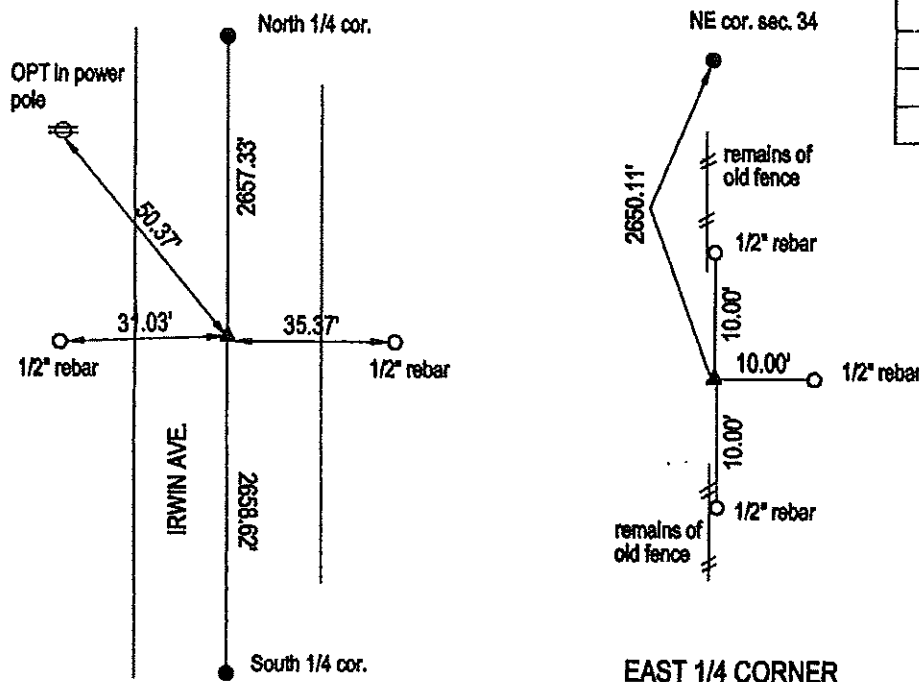
(SHOW REASON FOR PREPARING THIS CERTIFICATE, THE EVIDENCE AND DETAILED PROCEDURES USED IN ESTABLISHING THE CORNER POSITIONS AND MONUMENTATION FOUND OR PLACED.)

MONUMENT DESCRIPTION AND REMARKS:

Found no certificate recorded for either corner. At Center of section searched at approximate location with locator but found nothing. County did not have ties for this corner or list monumentation for corner Set pin with cap on line between north 1/4 and south 1/4 and at prorated dimension between the two corners as shown on County tie sheet. Survey in section 35 recorded as document 2002-0542 shows corner set at West 1/4 corner of section 35. Searched area at distance shown from northwest corner and at fence line but found nothing. We then computed location for corner using bearings and distances shown on plat. This came to area where fence line had been cleared, Checked again with locator but found nothing. Then dug at location and found nothing. Believed pin may have been removed when fence line was cleared, Set 1/2" rebar with cap at calculated position.

PLAN VIEW

(SHOW A MINIMUM OF THREE REFERENCE TIES TO DURABLE PHYSICAL OBJECTS, RELEVANT MONUMENTS AND PHYSICAL CONDITIONS THAT WILL ENABLE RECOVERY OF THE CORNER.)



CENTER SECTION
Cor O

EAST 1/4 CORNER
Cor C

REVISED 3/17/2011. CHANGED DIMENSIONS. SEE 2011-0471



I HEREBY CERTIFY THAT THIS LAND SURVEYING DOCUMENT WAS PREPARED AND THE RELATED SURVEY WORK WAS PERFORMED BY ME OR UNDER MY DIRECT PERSONAL SUPERVISION AND THAT I AM A DULY LICENSED LAND SURVEYOR UNDER THE LAWS OF THE STATE OF IOWA.

Steve Busse 3/23/2011
 STEVE BUSSE DATE

LICENSE NUMBER 9018
 MY LICENSE RENEWAL DATE IS DECEMBER 31, 2012
 PAGES OR SHEETS COVERED BY THIS SEAL 1

G.P. = 2" GAS PIPE
 CONC MONU = CONCRETE MONUMENT W/ P/N & ALUM CAP
 X NAILS = CROSS NAILS IN WOOD POST
 OPT = PLASTIC TAG (O=ORANGE, Y=YELLOW)
 (OO) RECORDED AS

LIST CORNERS TO BE INDEXED

CORNER	SECTION	TOWNSHIP	RANGE
CENTER	34	94	13
EAST 1/4 COR.	34	94	13