

Prepared by & Return to: Herold - Reicks Surveying, 2206 East Bremer Avenue, Waverly, IA 50677, Ph. 319-483-5187

### United States Public Land Survey Corner Certificate

Land Survey Monument situated in  
 Section 35, Township 94 North, Range 14 West of the Fifth Principal Meridian, Chickasaw County, Iowa.  
 On file in Document #2008-1037 in the County Recorder's office.

This certificate is being prepared in compliance with Iowa Code Chapter 355.11 because:

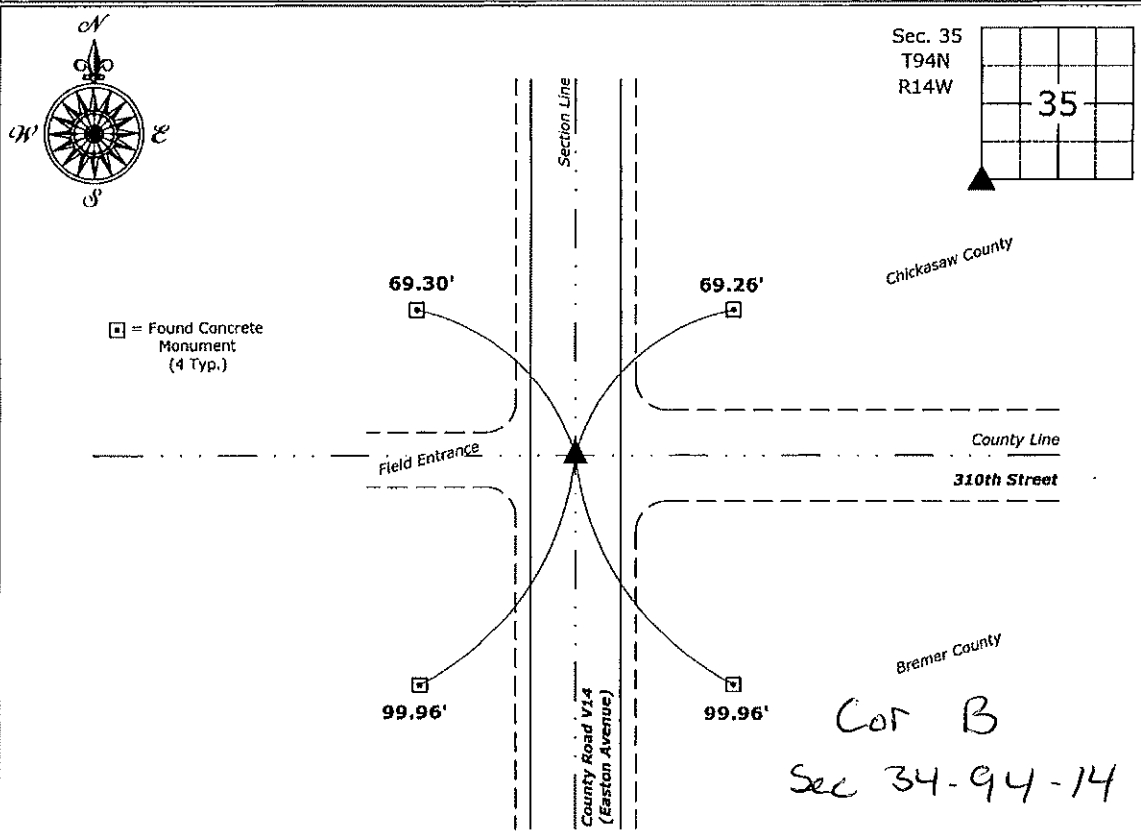
- There is no certificate on file for this corner.
- There are no longer three valid ties of record.
- There are changes to reference ties of record.
- There is change of monumentation of record.
- To clarify description of record monument (ties).

**Monument Description and Remarks:**

**Southwest Corner:** Found Mag Nail w/Stainless Steel Washer PLS 15525 with information obtained from the previously recorded Section Corner Certificate. Set 1"Ø Bronze Survey Marker PLS 22468 at the found location obtained prior to highway reconstruction. Corner being reset in conjunction with Project No. FM-C019(88)--55-19.

### Plan View

(Show a minimum of three reference ties to durable physical objects, relevant monuments and physical conditions that will enable recovery of the corner.)



Southwest Corner of Section 35-94-14  
 Set 1"Ø Bronze Survey Marker PLS 22468



I hereby certify that this land surveying document was prepared and the related survey work was performed by me or under my direct personal supervision and that I am a duly licensed Land Surveyor under the laws of the State of Iowa.  
*Isiah M. Reicks* 9-18-18  
 Isalah M. Reicks Date:  
 License number 22468  
 My license renewal date is December 31, 2019.  
 Sheets covered by this seal: Individual sheet only

List Corner to be Indexed			
Corner	Section	Twp.	Range
SW	35	94	14
Project Number: 2018-505			
FB: Bremer 12, Pgs. 43			

File: I:\\_CSD Projects - Waverly\County Control Systems\BREMER-1\BREMER-1.dwg, 9/18/2018 3:53:20 PM

Chickasaw Co. Recorder  
 Cindy Messersmith  
**Fee Book 2008-1037**  
 05/29/2008 @0359PM  
 SCC: SEC COR CERT  
 Book: Page: # Pages: 1  
 Total Fees: \$7.00

Section 34-94-14  
 As ref. to in  
 Engr. Title Book

Herold - Recks Surveying, 25 1/2 East Main Street, Suite 204, New Hampton, IA 50659, Ph. 641-394-2725

**UNITED STATES PUBLIC LAND SURVEY CORNER CERTIFICATE**

Land Survey Monuments situated in:  
 Section 35, Township 94 North, Range 14 West of the Fifth Principal Meridian,  
Chickasaw County, Iowa. Previously recorded in 1.) None 2.) None  
 In County Recorder's Office.

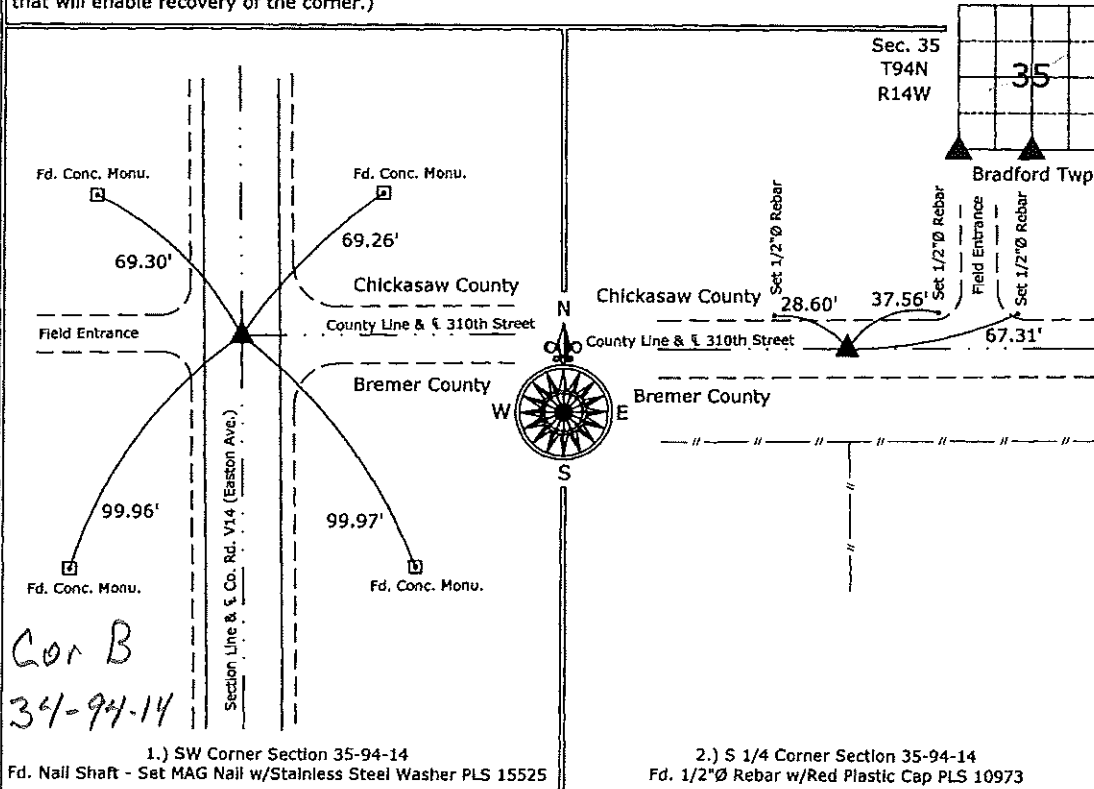
(Show reason for preparing this certificate, the evidence and detailed procedures used in establishing the corner positions and monumentation found or placed.)

**Monument Description and Remarks:**

- 1.) SW Corner Section 35-94-14: Fd. Nail Shaft matching record ties, removed and set MAG Nail w/Stainless Steel Washer PLS 15525 in order to update the corner monument.
- 2.) S 1/4 Corner Section 35-94-14: Fd. 1/2"Ø Rebar w/Red Plastic Cap PLS 10973, in the center of the gravel road in line with a fence running South, previously unrecorded, none of the County ties exist, accepted corner position as correct.

**PLAN - VIEW**

(Show a minimum of three reference ties to durable physical objects, relevant monuments and physical conditions that will enable recovery of the corner.)



1.) SW Corner Section 35-94-14  
 Fd. Nail Shaft - Set MAG Nail w/Stainless Steel Washer PLS 15525

2.) S 1/4 Corner Section 35-94-14  
 Fd. 1/2"Ø Rebar w/Red Plastic Cap PLS 10973



I hereby certify that this land surveying document was prepared and the related survey work was performed by me or under my direct personal supervision and that I am a duly licensed Land Surveyor under the laws of the State of Iowa.  
 Paul R. Herold Date: 5-28-08  
 Paul R. Herold Date:  
 License number 15525  
 My license renewal date is December 31, 2008.  
 Sheets covered by this seal: Individual sheet only

List Corners to be Indexed			
Corners	Section	Twp.	Range
SW	35	94	14
S 1/4	35	94	14

Project Number: 2008-038  
 FB: Bremer County 1, Pgs. 9-10

File: S:\Projects\2008\2008-038\dwg\2008-038.dwg, 5/23/2008 1:40:27 PM