

STEVE BUSSE P.O. BOX 241 508 ELM ST. ALLISON, IOWA 50602 319-267-2519

## UNITED STATES PUBLIC LAND SURVEY CORNER CERTIFICATE OF

LAND SURVEY MONUMENTS SITUATED IN SECTION NO. 35, TOWNSHIP NO. 94 NORTH, RANGE  
 NO. 14 WEST OF THE FIFTH PRINCIPAL MERIDIAN, CHICKASAW COUNTY, IOWA.  
 PREVIOUSLY RECORDED IN N/A

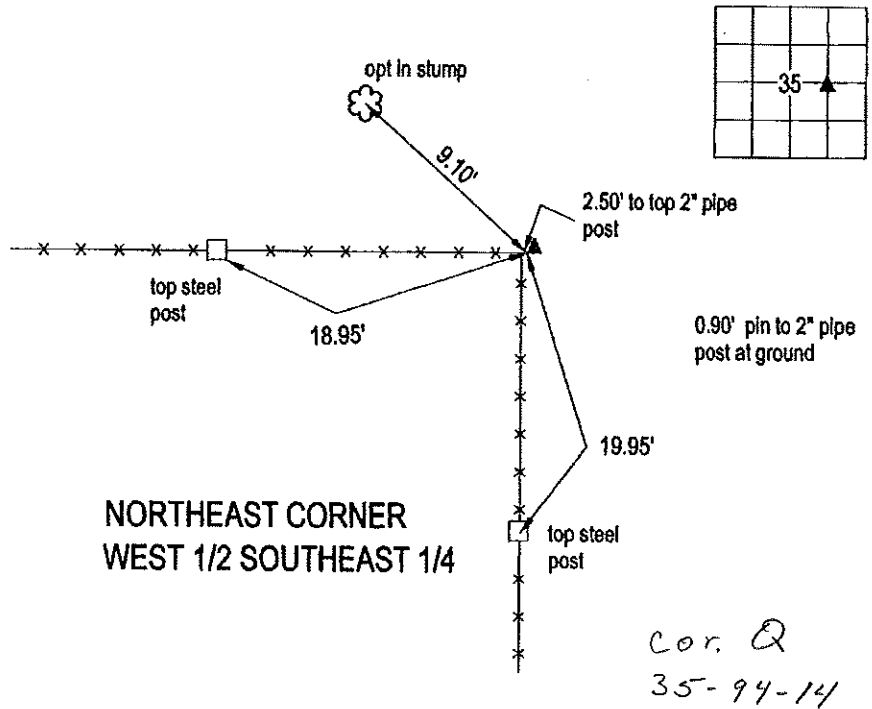
(SHOW REASON FOR PREPARING THIS CERTIFICATE, THE EVIDENCE AND DETAILED PROCEDURES USED IN ESTABLISHING THE  
 CORNER POSITIONS AND MONUMENTATION FOUND OR PLACED.)

**MONUMENT DESCRIPTION AND REMARKS:**

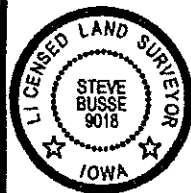
There are no certificates recorded for this corner. County ties do not call for monumentation for this corner. We searched area around fence corner at approximate location. Probed around round steel post with fence line to south and to west. We did not find a stone. We set pin with cap at base of steel pipe post. Checked distance to fence post at center of section and with East 1/4 corner. Pin was within 1 foot of split between those two corners. Used pin set as the corner and used in survey in section 35.

### PLAN VIEW

(SHOW A MINIMUM OF THREE REFERENCE TIES TO DURABLE PHYSICAL OBJECTS, RELEVANT MONUMENTS AND PHYSICAL  
 CONDITIONS THAT WILL ENABLE RECOVERY OF THE CORNER.)



**NORTHEAST CORNER  
WEST 1/2 SOUTHEAST 1/4**



I HEREBY CERTIFY THAT THIS LAND SURVEYING DOCUMENT  
 WAS PREPARED AND THE RELATED SURVEY WORK WAS  
 PERFORMED BY ME OR UNDER MY DIRECT PERSONAL  
 SUPERVISION AND THAT I AM A DULY LICENSED LAND  
 SURVEYOR UNDER THE LAWS OF THE STATE OF IOWA.

*Steve Busse*  
 STEVE BUSSE  
 7/29/11  
 DATE

LICENSE NUMBER 9018  
 MY LICENSE RENEWAL DATE IS DECEMBER 31, 2012  
 PAGES OR SHEETS COVERED BY THIS SEAL 1

G.P. = 2" GAS PIPE  
 CONC MONU = CONCRETE MONUMENT W/ PIN & ALUM CAP  
 "X NAILS" = CROSS NAILS IN WOOD POST  
 OPT = PLASTIC TAG (O=ORANGE, Y=YELLOW)  
 (00) RECORDED AS

CORNER	SECTION	TOWNSHIP	RANGE
NORTHEAST COR. WEST 1/2 SOUTHEAST 1/4	35	94	14