

Chickasaw Co. Recorder
 Cindy Messersmith
Fee Book 2008-1037
 05/29/2008 @0359PM
 SCC SEC COR CERT
 Book: Page: # Pages: 1
 Total Fees: \$7.00

Section 34-94-14
 As ref. to in
 Engr. Title Book

Herold - Recks Surveying, 25 1/2 East Main Street, Suite 204, New Hampton, IA 50659, Ph. 641-394-2725

UNITED STATES PUBLIC LAND SURVEY CORNER CERTIFICATE

Land Survey Monuments situated in:
 Section 35, Township 94 North, Range 14 West of the Fifth Principal Meridian,
Chickasaw County, Iowa. Previously recorded in 1.) None 2.) None
 In County Recorder's Office.

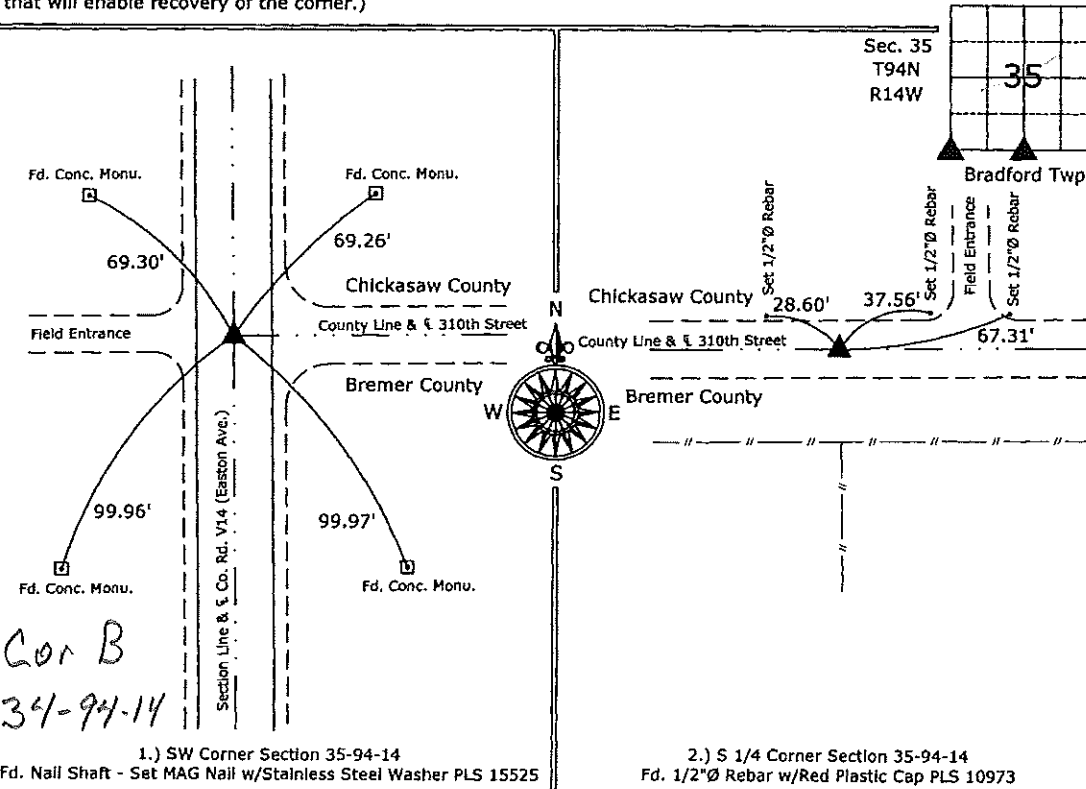
(Show reason for preparing this certificate, the evidence and detailed procedures used in establishing the corner positions and monumentation found or placed.)

Monument Description and Remarks:

- 1.) SW Corner Section 35-94-14: Fd. Nail Shaft matching record ties, removed and set MAG Nail w/Stainless Steel Washer PLS 15525 in order to update the corner monument.
- 2.) S 1/4 Corner Section 35-94-14: Fd. 1/2"Ø Rebar w/Red Plastic Cap PLS 10973, in the center of the gravel road in line with a fence running South, previously unrecorded, none of the County ties exist, accepted corner position as correct.

PLAN - VIEW

(Show a minimum of three reference ties to durable physical objects, relevant monuments and physical conditions that will enable recovery of the corner.)



1.) SW Corner Section 35-94-14
 Fd. Nail Shaft - Set MAG Nail w/Stainless Steel Washer PLS 15525

2.) S 1/4 Corner Section 35-94-14
 Fd. 1/2"Ø Rebar w/Red Plastic Cap PLS 10973



I hereby certify that this land surveying document was prepared and the related survey work was performed by me or under my direct personal supervision and that I am a duly licensed Land Surveyor under the laws of the State of Iowa.
Paul R. Herold 5-28-08
 Paul R. Herold Date:
 License number 15525
 My license renewal date is December 31, 2008.
 Sheets covered by this seal: Individual sheet only

| List Corners to be Indexed | | | |
|----------------------------|---------|------|-------|
| Corners | Section | Twp. | Range |
| SW | 35 | 94 | 14 |
| S 1/4 | 35 | 94 | 14 |

Project Number: 2008-038
 FB: Bremer County 1, Pgs. 9-10

File: S:\Projects\2008\2008-038\dwg\2008-038.dwg, 5/23/2008 1:40:27 PM