

Section 26-94-14
 As ref. to in
 Engr. Plc Book

2006-1900
 9/12/2006

TeKIPPE ENGINEERING, P.C., 128 South Vine Street, West Union, Iowa 52175 Phone (563) 422-5131

UNITED STATES PUBLIC LAND SURVEY CORNER CERTIFICATE

OF 26

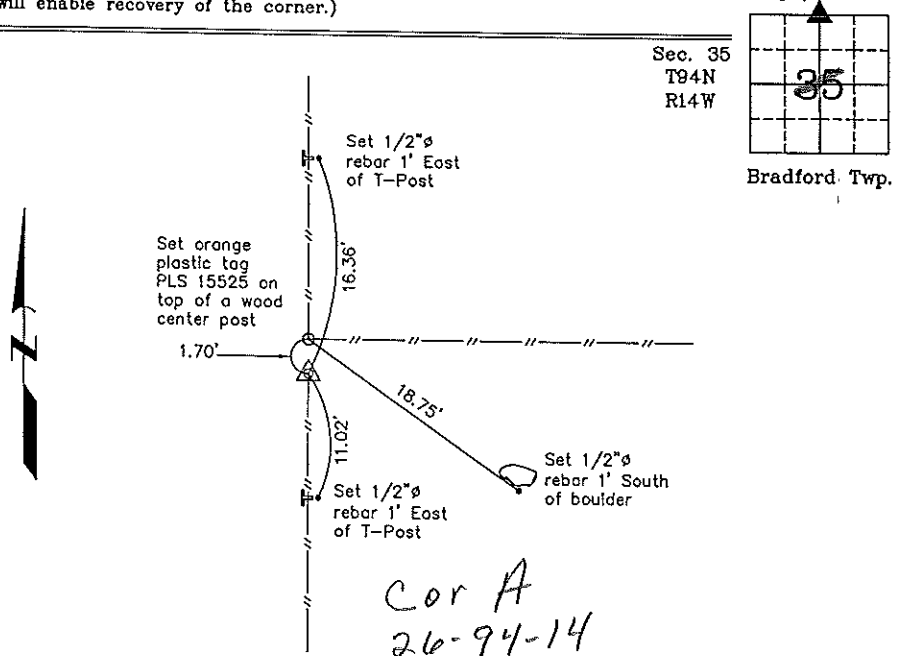
Land Survey Monuments situated in Section 35, Township 94 North, Range 14 West of the Fifth Principal Meridian, Chickasaw County, Iowa. Previously recorded in none in County Recorder's Office.
(book page, document number, etc.)

(Show reason for preparing this certificate, the evidence and detailed procedures used in establishing the corner positions and monumentation found or placed.)

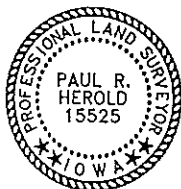
Monument Description and Remarks: N 1/4 Corner Section 35 T94N R14W. Set 1/2"Ø rebar with 2"Ø aluminum cap PLS 15525, at the intersection of possession line fences. After comparing position to adjacent corners in the Section.

PLAN - VIEW

(Show a minimum of three reference ties to durable physical objects, relevant monuments and physical conditions that will enable recovery of the corner.)



N 1/4 Corner Section 35 T94N R14W
 Set 1/2"Ø rebar w/2"Ø aluminum cap PLS 15525



I hereby certify that this land surveying document was prepared and the related survey work was performed by me or under my direct personal supervision and that I am a duly licensed Land Surveyor under the laws of the State of Iowa.

Paul R. Herold 9-16-06
 Paul R Herold Date
 License number 15525
 My license renewal date is December 31, 2008.
 Sheets covered by this seal: Individual

List Corners to be Indexed			
Corners	Section	Twp.	Range
N 1/4	35	94N	14W

Project Number 06249.15
 FR. 48M, PGS. 21-22
 X:\Section Corners\Sec. 35\35-94-14c.dwg