

Section 26-94-14  
 AS ref. to in  
 Engr. Tie Book

FILED 2004-0508

RECORDER'S OFFICE  
 CHICKASAW COUNTY, IOWA

2004 MAR 5 AM 8 45

CINDY MESSERSMITH  
 COUNTY RECORDER

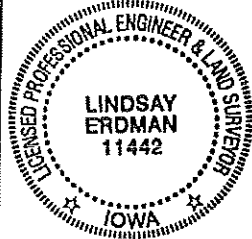
Prepared by: Erdman Engineering, P.C., 708 Commerce Drive, P.O. Box 246, Decorah, Iowa 52101 (563) 382-4194

United States Public Land Survey Corner Certificate  
 of 26

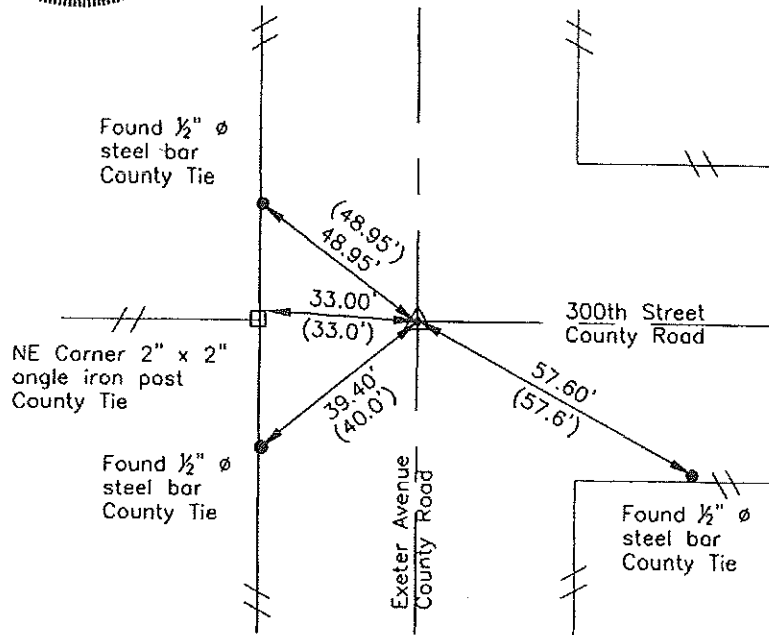
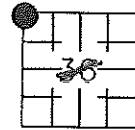
Land Survey Monuments situated in Section 36, Township 94, Range 14 West of the 5th Principal Meridian in Chickasaw County, Iowa. Previously recorded in does not apply in the county Recorder's Office.

Monument Description and Remarks: This certificate is prepared in accordance with Section 193C of the Code of Iowa. No previous certificate has been filed for this corner location. Based on Chickasaw County Engineer's Reference ties we found three 1/2" diameter steel bars and a steel fence post used previously as tie markers. From these ties we found a 1/2" diameter steel bar at the approximate centerline-centerline intersection of the county roads and in line with the fence line running west. County Engineer's Reference ties show only that an iron pin had been set over a stone in 1977. We used the bar as the NW Corner of Section 36, Township 94 North, Range 14 West.

Plan-View



COR. B 26-94-14



I hereby certify that the survey work was completed and this certificate was prepared by me or under my direct supervision and that I am a duly registered land surveyor under the laws of the State of Iowa.

Signature: *Lindsay Erdman*  
 Lindsay Erdman, P.E. and P.L.S., Iowa License Number 11442

Date: 3/4/04

My license renewal date is December 31, 2004

Corner(s) to be Indexed

Corner	Section	Township	Range
NW	36	94	14