

Section 36-94-14 2007-1103
 As-ref to in
 Engr. Title Book

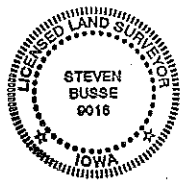
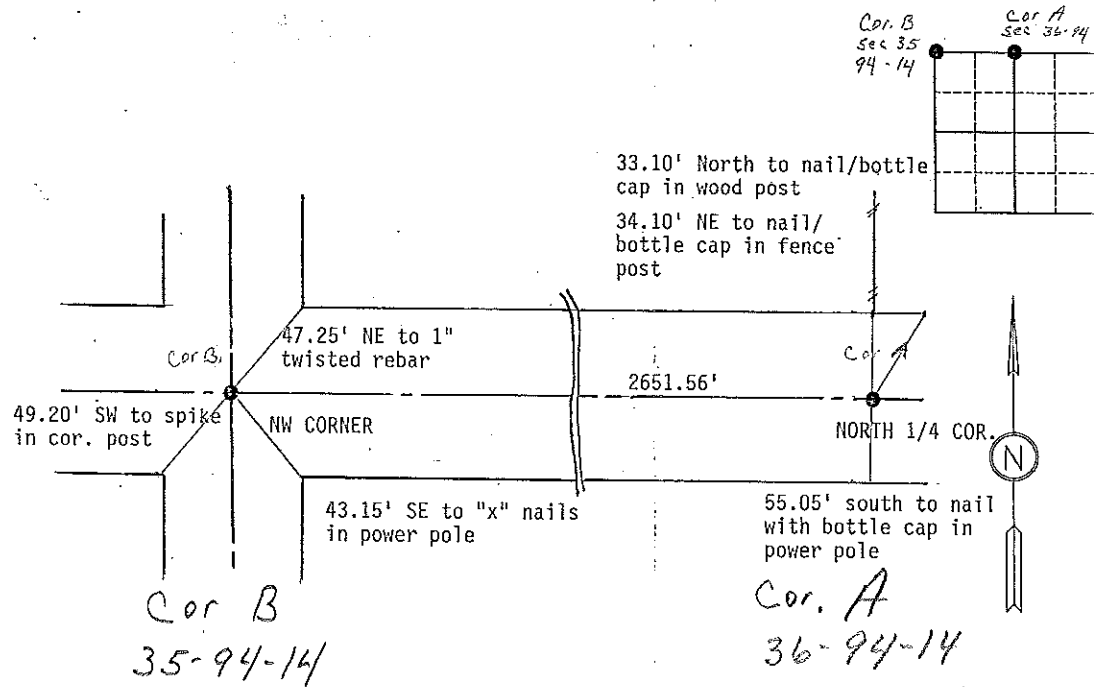
STEVE BUSSE P.O. BOX 241 508 ELM STREET ALLISON, IOWA 50602 (319) 267-2519

UNITED STATES PUBLIC LAND SURVEY CORNER CERTIFICATE

Land Survey Monuments situated in Section: 36 Township: 94
 Range: 14 West Of the Fifth Principal Meridian, Bremer County, Iowa.
 Previously recorded in N/A in County Recorder's Office.

Monument Description and Remarks: FOUND 1" AXLE ROD IN CENTER OF INTERSECTION AT NW CORNER
SECTION FROM INFORMATION FROM CHICKASAW COUNTY ENGINEERS OFFICE. FOUND 1/2" REBAR AT NORTH
1/4 CORNER. CORNER IS IN LINE WITH FENCE TO NORTH. FOUND FROM INFORMATION FROM CHICKASAW
COUNTY ENGINEERS OFFICE. USED CORNERS IN SURVEY IN SECTION 1.

PLAN - VIEW



I hereby certify that this land surveying document was prepared and the related survey work was performed by me or under my direct personal supervision and that I am a duly licensed Land Surveyor under the laws of the State of Iowa.

Steve Busse 5/28/07
 STEVE BUSSE DATE

License number 9018
 My license renewal date is Dec 31, 2008
 Pages or sheets covered by this seal: 1

List Corners to be indexed:

Corners	Sect.	Twp	Range
NW cor.	1	93	14
North 1/4	1	93	14
SW cor.	36	94	14
South 1/4	36	94	14

Section 35-94-14
 As ref. to in
 Eng. Tie Book

SLS1 9-94

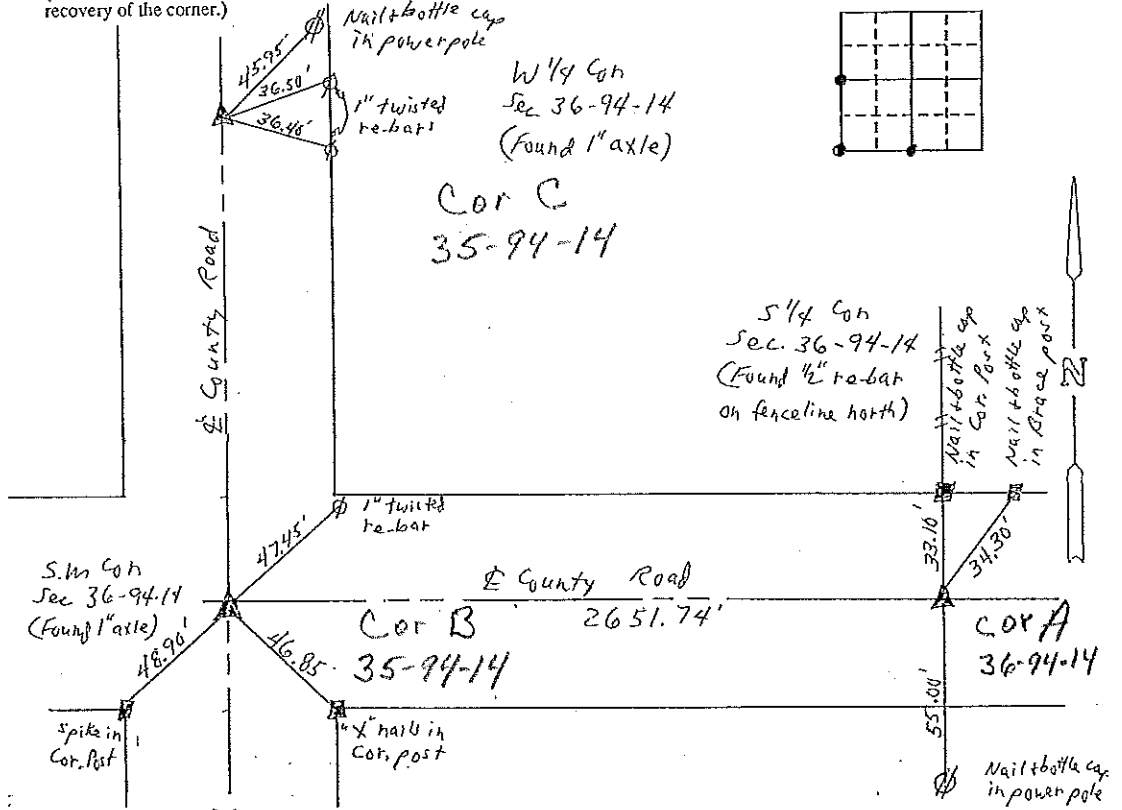
UNITED STATES PUBLIC LAND SURVEY CORNER CERTIFICATE

Land Survey Monuments situated in Section 36 ^{OF 35}, Township 94, Range 14, of the Fifth Principal Meridian, Chickasaw County, Iowa. Previously recorded in Not Applicable in County Recorder's Office. (book, page, document number, etc.)

(Show reason for preparing this certificate, the evidence and detailed procedures used in establishing the corner positions and monumentation found or placed.)
 Monument Description and Remarks: _____

PLAN - VIEW

(Show a minimum of three reference ties to durable physical objects, relevant monuments and physical conditions that will enable recovery of the corner.)



I hereby certify that the survey work was completed and this land surveying document was prepared by me or under my direct personal supervision and that I am a duly registered land surveyor under the laws of the state of Iowa

Signature: Harlan K. Schuch

Name typed or printed: Harlan K. Schuch

Date: 9/13/96 Reg. No. 9962

My registration renewal date is December 31, 1997

SEAL

Corners	Section	Twp	Range
SW	36	94	14 B-35
S 1/4	36	94	14 A-35
W 1/4	36	94	14 C-35-74

Placed in
 Tie Book
 10/7/96
 JH