

Section 25-94-14  
 As ref. to in  
 Engg. Tie Book

FILED 2004-0509  
 RECORDER'S OFFICE  
 CHICKASAW COUNTY, IOWA  
 2004 MAR 5 AM 8 46  
 Fee 11.00  
 CINDY MESSERSMITH  
 COUNTY RECORDER

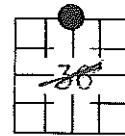
Prepared by: Erdman Engineering, P.C., 708 Commerce Drive, P.O. Box 246, Decorah, Iowa 52101 (563) 382-4194

United States Public Land Survey Corner Certificate  
 of 25

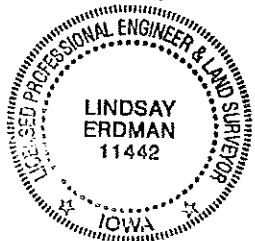
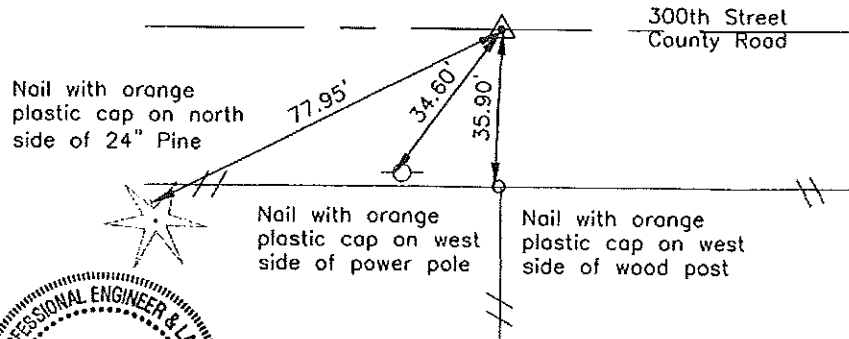
Land Survey Monuments situated in Section 36, Township 94, Range 14 West of the 5th Principal Meridian in Chickasaw County, Iowa. Previously recorded in does not apply in the county Recorder's Office.

Monument Description and Remarks: This certificate is prepared in accordance with Section 193C of the Code of Iowa. No previous certificate has been filed for this corner location. Chickasaw County Engineer's Reference Ties show that a spike had been set in 1977 at the S 1/4 Corner (Corner A of Bradford Township) of Section 25. We found a 60d steel spike at the approximate centerline of the county road and in line with the fence line running south. We used the spike as the N 1/4 Corner of Section 36, Township 94 North, Range 14 West.

Plan-View



COR. A 25-94-14



I hereby certify that the survey work was completed and this certificate was prepared by me or under my direct supervision and that I am a duly registered land surveyor under the laws of the State of Iowa.

Signature: Lindsay Erdman  
 Lindsay Erdman, P.E. and P.L.S. Iowa License Number 11442  
 Date: 3/4/04

My license renewal date is December 31, 2004

Corner(s) to be indexed

Corner	Section	Township	Range
N 1/4	36	94	14