

Prepared by & Return to: Herold - Reicks Surveying, 161 East Main Street, New Hampton, IA 50659, Ph. 641-394-2725

UNITED STATES PUBLIC LAND SURVEY CORNER CERTIFICATE

Land Survey Monuments situated in Section 4, Township 94 North, Range 14 West of the Fifth Principal Meridian, **Chickasaw** County, Iowa. Previously not recorded in the County Recorder's office.

This certificate is being prepared in compliance with Iowa Code Chapter 355.11 because:

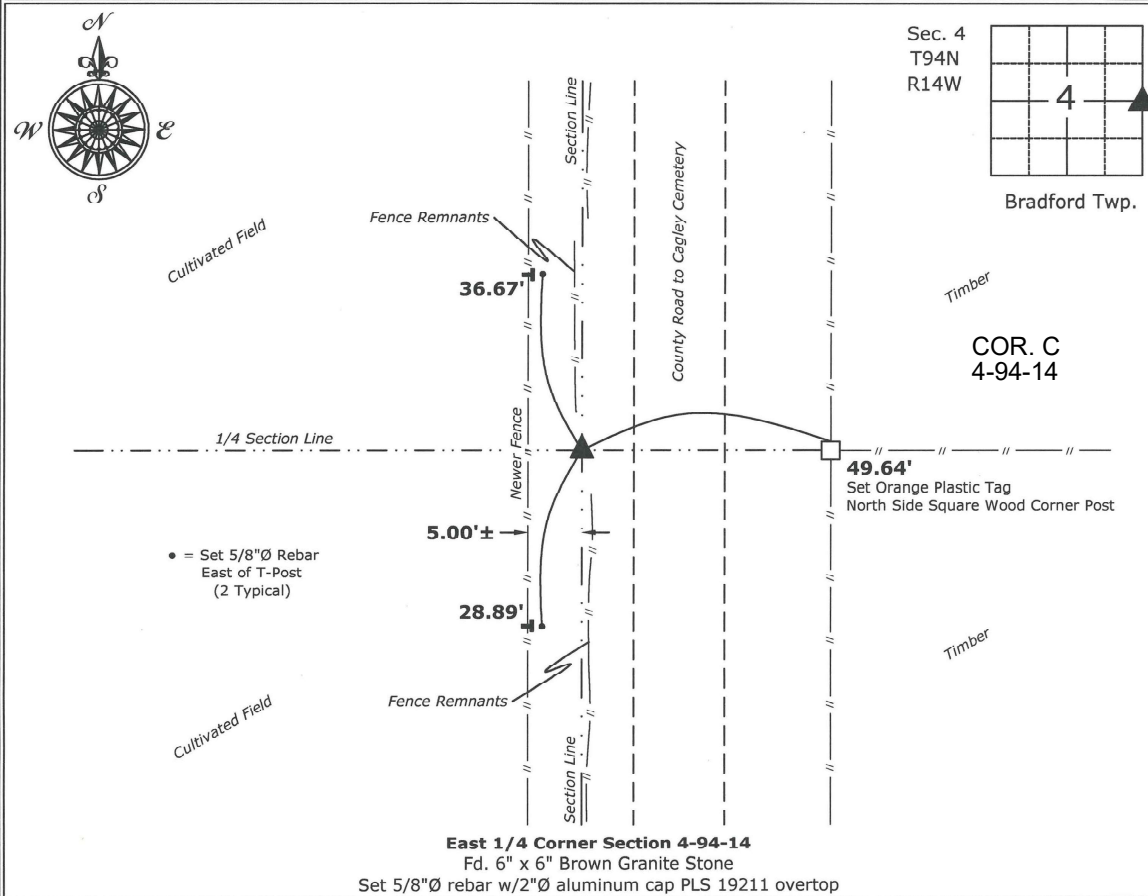
- There is no certificate on file for this corner.
- There are no longer three valid ties of record.
- There are changes to reference ties of record.
- There is change of monumentation of record.
- To clarify description of record monument (ties).

Monument Description and Remarks:

East 1/4 Corner: Found 6" x 6" Brown Granite Stone 36" deep with information obtained from the County Engineers office in Surveyor's Record Book, Pg. 139. Set 5/8"Ø rebar w/2"Ø aluminum cap PLS 19211 otop of the Stone to perpetuate the monument.

PLAN - VIEW

(Show a minimum of three reference ties to durable physical objects, relevant monuments and physical conditions that will enable recovery of the corner.)



East 1/4 Corner Section 4-94-14

Fd. 6" x 6" Brown Granite Stone

Set 5/8"Ø rebar w/2"Ø aluminum cap PLS 19211 otop



I hereby certify that this land surveying document was prepared and the related survey work was performed by me or under my direct personal supervision and that I am a duly licensed Land Surveyor under the laws of the State of Iowa.

Kirk D. Reicks 12-3-14

Kirk D. Reicks Date:

License number 19211

My license renewal date is December 31, 2014.

Sheets covered by this seal: Individual sheet only

List Corners to be Indexed

Corners	Section	Twp.	Range
E 1/4	4	94	14

Project Number: 2014-215

FB: Chickasaw County 7, Pgs. 6-8