

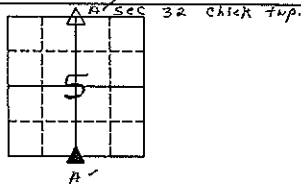
PREPARED BY - S & S LAND SURVEYING, INC., 118 W BREMER AVE., PO BOX 148, WAVERLY, IOWA 50877 - PHONE 319-352-8444

UNITED STATES PUBLIC LAND SURVEY CORNER CERTIFICATE

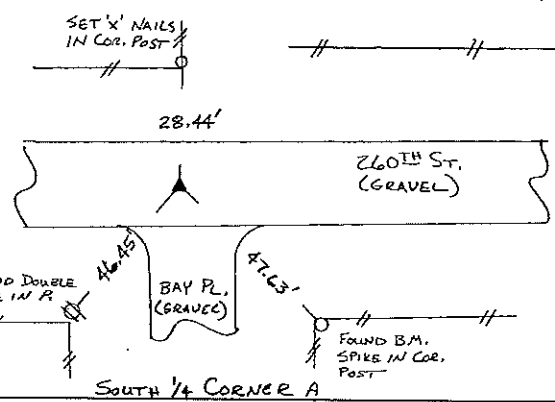
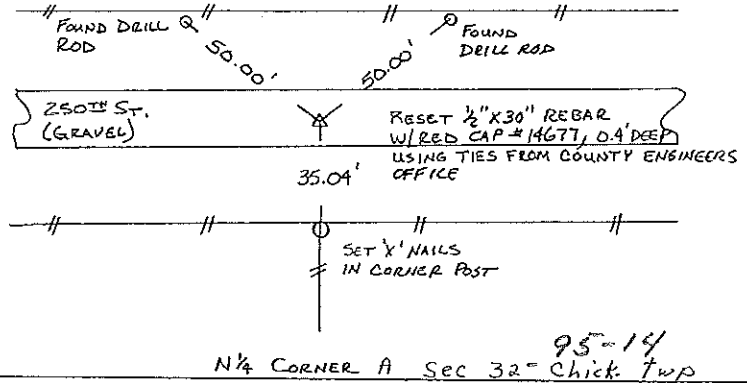
OF

Land Survey Monuments situated in Section 5, Township 94 NORTH, Range 14 WEST, of the Fifth Principal Meridian, CHICKASAW County, Iowa.
 Previously recorded in Book _____, Page _____.

CORNERS WERE LOCATED FOR LAND SURVEY IN THE SOUTHWEST QUARTER, USING TIES OBTAINED FROM THE CHICKASAW COUNTY ENGINEERS OFFICE. RECORDED TIES FOR THE SOUTHWEST CORNER CHECKED GOOD.



PLAN-VIEW
NO SCALE



I hereby certify that this land surveying document was prepared and the related survey work was performed by me or under my direct personal supervision and that I am a duly Licensed Professional Land Surveyor under the laws of the State of Iowa.

Scott A. Steinfeldt 1/4/00
 Scott A. Steinfeldt, P.L.S. date
 Iowa License No. 14677
 My License Renewal Date is Dec. 31, 2000.

List Corners to be Indexed

Corners	Section	Twp	Range
N1/4	cor. A 5	94	14
S1/4	cor. A 5 ³²	94 25	14



118 W. BREMER AVE. PO BOX 148
 WAVERLY, IOWA 50877
 (319) 352-8444

2000-0037