

Prepared by & Return to: Harold - Racks Surveying, 10 East Main Street, New Hampton, IA 58659, Ph. 641-384-2725

UNITED STATES PUBLIC LAND SURVEY CORNER CERTIFICATE

Land Survey Monuments situated in Section 6, Township 94 North, Range 14 West of the Fifth Principal Meridian, Chickasaw County, Iowa. 1.) Previously recorded in Bk. 2011, Pg. 1113 in the County Recorder's office. 2.) Previously recorded in Bk. 2007, Pg. 0649 in the County Recorder's office.

This certificate is being prepared in compliance with Iowa Code Chapter 355.11 because:

- There is no certificate on file for this corner.
- There are no longer three valid ties of record.
- There are changes to reference ties of record.
- 1 & 2 There is change of monumentation of record.
- To clarify description of record monument (ties).

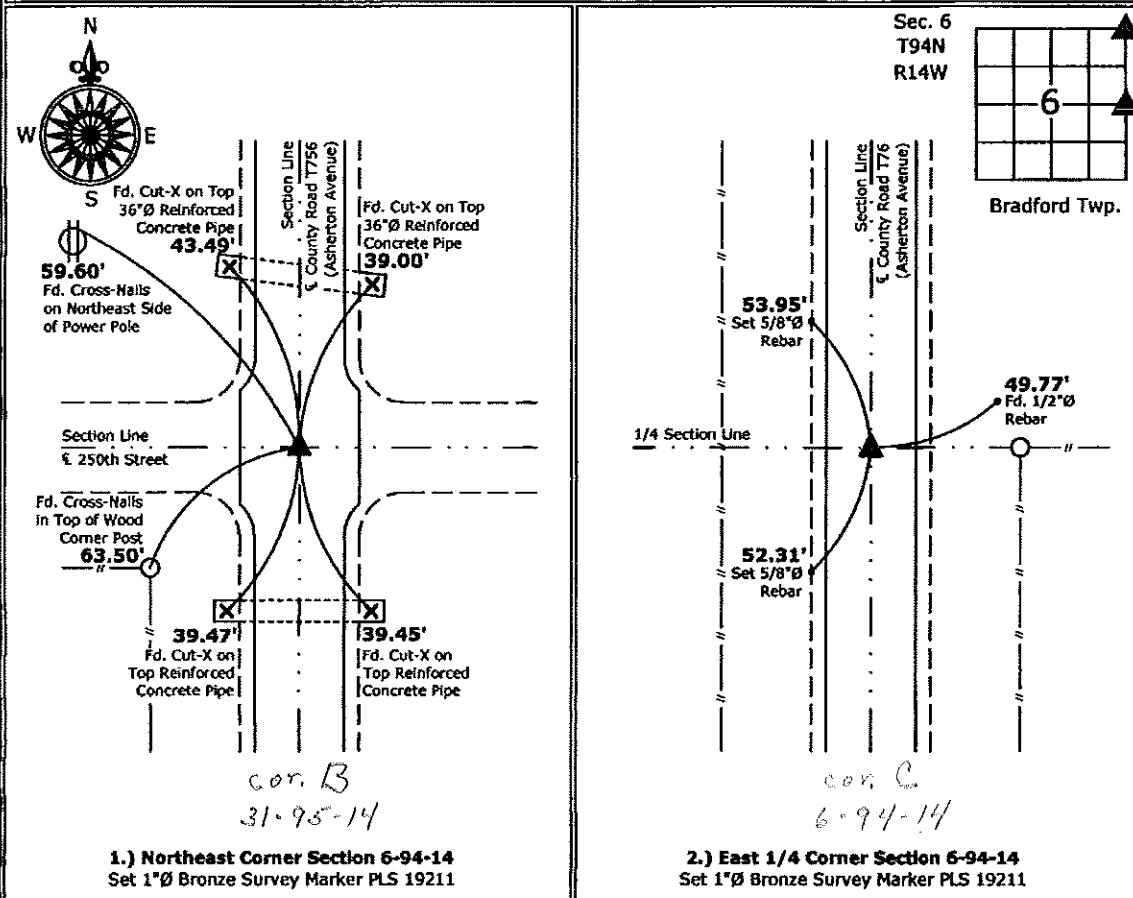
Monument Description and Remarks:

1.) Northeast Corner: Set 1"Ø Bronze Survey Marker PLS 19211 at previous location (Found MAG Nail) by means of coordinates obtained prior to highway reconstruction, Project No. STP-S-CO19(80)--5E-19.

2.) East 1/4 Corner: Set 1"Ø Bronze Survey Marker PLS 19211 at previous location (Found MAG Nail) by means of coordinates obtained prior to highway reconstruction, Project No. STP-S-CO19(80)--5E-19.

PLAN - VIEW

(Show a minimum of three reference ties to durable physical objects, relevant monuments and physical conditions that will enable recovery of the corner.)



I hereby certify that this land surveying document was prepared and the related survey work was performed by me or under my direct personal supervision and that I am a duly licensed Land Surveyor under the laws of the State of Iowa.
Kirk D. Reicks 7-5-12
 Kirk D. Reicks Date:
 License number 19211

| List Corners to be Indexed | | | |
|----------------------------|---------|------|-------|
| Corners | Section | Twp. | Range |
| NE | 6 | 94 | 14 |
| E 1/4 | 6 | 94 | 14 |

Section 6-94-14
 As referred to in
 Engr. TIC Book

Chickasaw Co., Recorder
 Cindy Messersmith
Fee Book 2007-0649
 04/02/2007 81055AM
 SCC SEC COR CERT
 Book: Page: # Pages: 1
 Total Fees: \$7.00

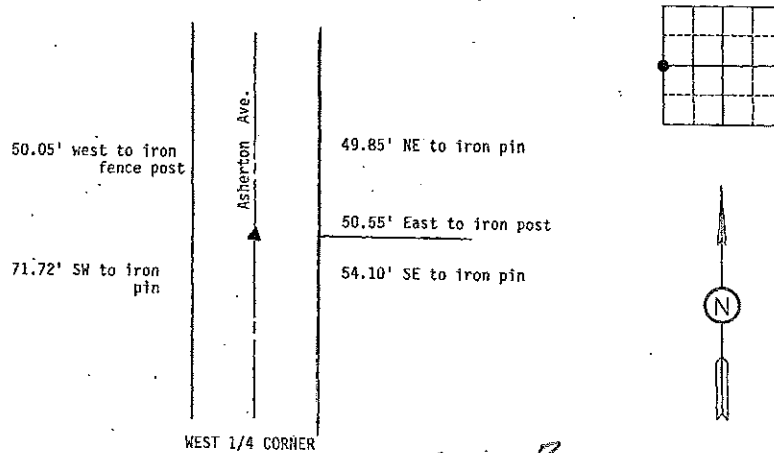
STEVE BUSSE P.O. BOX 241 508 ELM STREET ALLISON, IOWA 50602 (319) 267-2519

UNITED STATES PUBLIC LAND SURVEY CORNER CERTIFICATE

Land Survey Monuments situated in Section: 5 Township: 94 North
 Range: 14 West Of the Fifth Principal Meridian, Chickasaw County, Iowa.
 Previously recorded in N/A in County Recorder's Office.

Monument Description and Remarks: Found "PK" nail near centerline County Blacktop, Nail on fence line to east. Nail fit ties from County Engineer's Office. Used for survey in section 5 for Adam Barlow.

PLAN - VIEW



Cor B
 6-94-14



I hereby certify that this land surveying document was prepared and the related survey work was performed by me or under my direct personal supervision and that I am a duly Licensed Land Surveyor under the laws of the State of Iowa.
Steve Busse
 STEVE BUSSE
 License number 9018
 My license renewal date is Dec 31, 2008
 Pages or sheets covered by this sect 1

3/21/07
 DATE

List Corners to be Indexed:
 Corners Sect. Twp Range
 West 1/4 cor. 5 94 14