

Instrument #: 2022-0821  
 05/05/2022 04:20:41 PM Total Pages: 1  
 SCC SECTION CORNER CERTIFICATES  
 Recording Fee: \$ 7.00  
 Shirley Troyna, Recorder, Chickasaw County Iowa



Prepared by & Return to: Herold - Reicks Surveying, 10 East Main Street, New Hampton, IA 50659, Ph. 641-394-2725

### United States Public Land Survey Corner Certificate

Land Survey Monument situated in  
 Section 6, Township 94 North, Range 14 West of the Fifth Principal Meridian, Chickasaw County, Iowa.  
 Not on file in the County Recorder's Office.

This certificate is being prepared in compliance with Iowa Code Chapter 355.11 because:

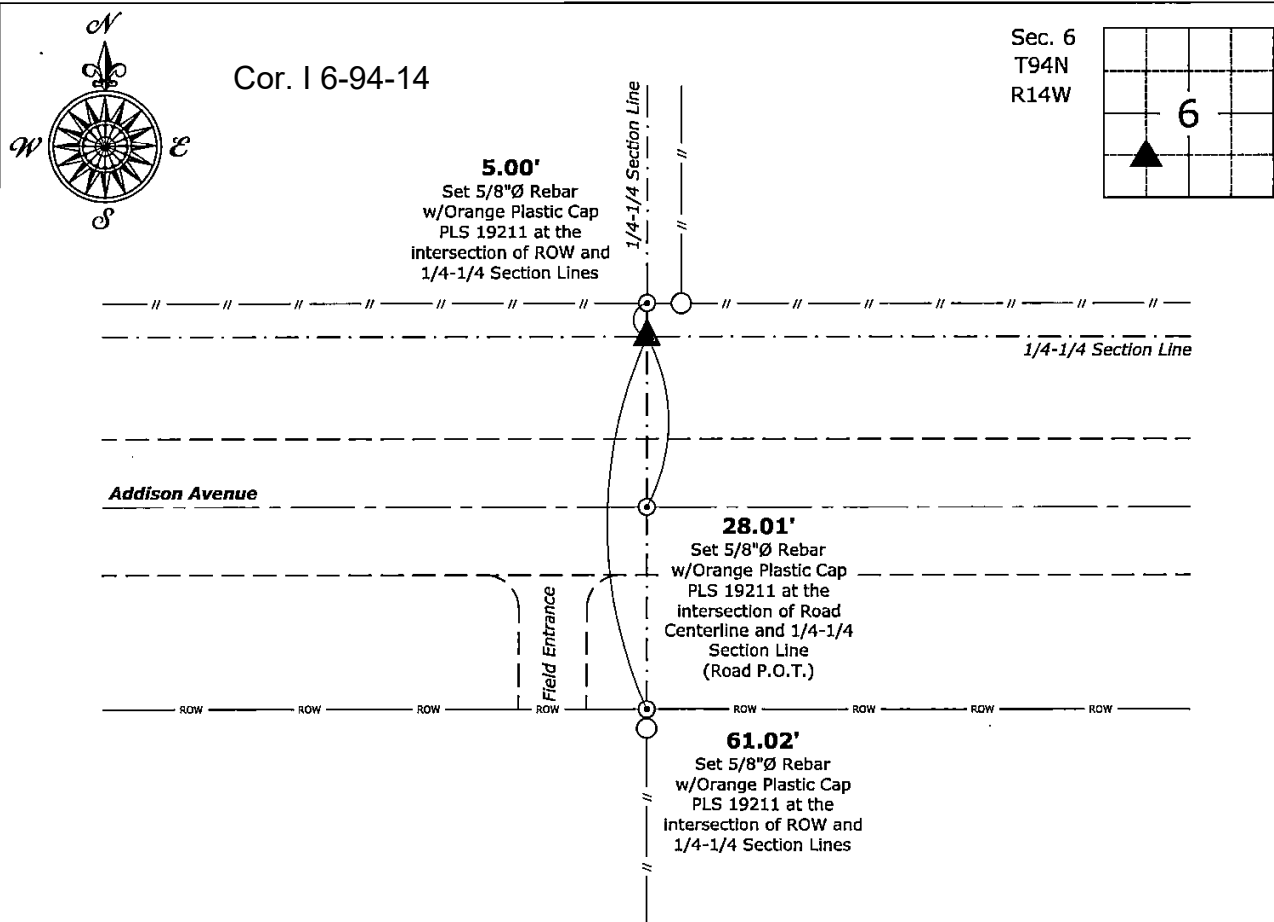
- There is no certificate on file for this corner.
- There are no longer three valid ties of record.
- There are changes to reference ties of record.
- There is change of monumentation of record.
- To clarify description of record monument (ties).

#### Monument Description and Remarks:

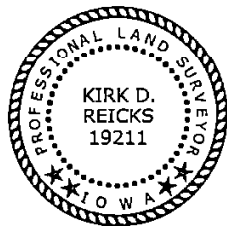
**Northeast Corner of the SW 1/4 - SW 1/4:** Set 5/8"Ø Rebar w/2"Ø Aluminum Cap PLS 19211 at the intersection on 1/4-1/4 Section Lines.

#### Plan View

(Show a minimum of three reference ties to durable physical objects, relevant monuments and physical conditions that will enable recovery of the corner.)



**Northeast Corner of the SW 1/4 - SW 1/4 of Section 6-94-14**  
 Set 5/8"Ø Rebar w/2"Ø Aluminum Cap PLS 19211



I hereby certify that this land surveying document was prepared and the related survey work was performed by me or under my direct personal supervision and that I am a duly licensed Land Surveyor under the laws of the State of Iowa.

*Kirk D. Reicks* 5-3-2022  
 Kirk D. Reicks Date:

License number 19211  
 My license renewal date is December 31, 2022.  
 Sheets covered by this seal: Individual sheet only

#### List Corner to be Indexed

Corner	Section	Twp.	Range
NE-SW-SW	6	94	14

Project Number: 2022-045

FB: Chickasaw 11, Pgs. 36-39