

Prepared by & Return to: Herold - Reicks Surveying, 10 East Main Street, New Hampton, IA 50659. Ph. 641-394-2725

United States Public Land Survey Corner Certificate

Land Survey Monument situated in
 Section 7, Township 94 North, Range 14 West of the Fifth Principal Meridian, **Chickasaw** County, Iowa.
 On file in **Document #2004-1466** in the County Recorder's office.

This certificate is being prepared in compliance with Iowa Code Chapter 355.11 because:

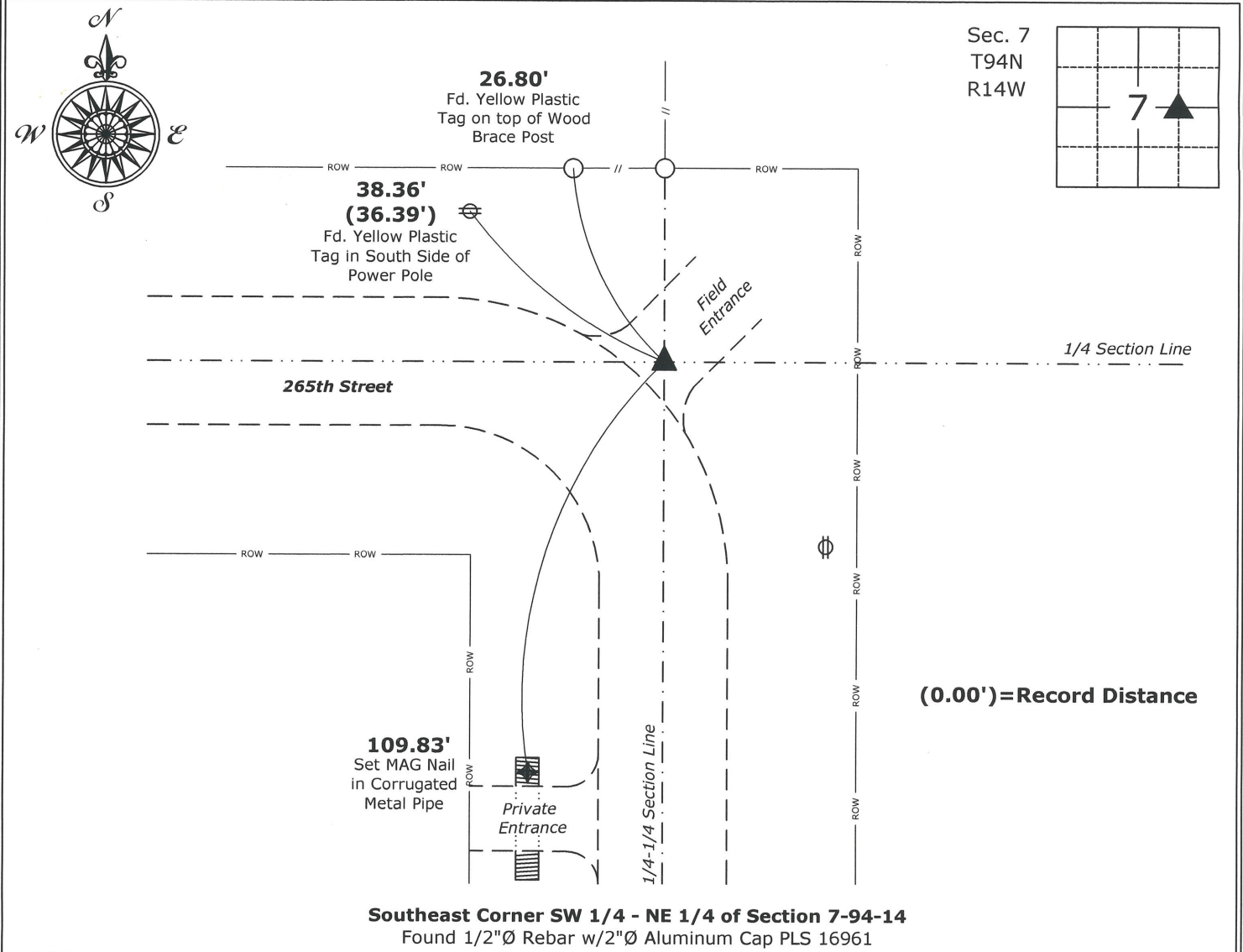
- There is no certificate on file for this corner.
- There are no longer three valid ties of record.
- There are changes to reference ties of record.
- There is change of monumentation of record.
- To clarify description of record monument (ties).

Monument Description and Remarks:

Southeast Corner SW 1/4 - NE 1/4: Found 1/2"Ø Rebar w/2"Ø Aluminum Cap PLS 16961 with information obtained from the previously recorded Section Corner Certificate.

Plan View

(Show a minimum of three reference ties to durable physical objects, relevant monuments and physical conditions that will enable recovery of the corner.)



Southeast Corner SW 1/4 - NE 1/4 of Section 7-94-14
 Found 1/2"Ø Rebar w/2"Ø Aluminum Cap PLS 16961



I hereby certify that this land surveying document was prepared and the related survey work was performed by me or under my direct personal supervision and that I am a duly licensed Land Surveyor under the laws of the State of Iowa.

Isaiah M. Reicks 9-20-21
 Isaiah M. Reicks Date:

License number 22468
 My license renewal date is December 31, 2021.
 Sheets covered by this seal: Individual sheet only

List Corner to be Indexed			
Corner	Section	Twp.	Range
SE-SW-NE	7	94	14
Project Number: 2021-064			
FB: Nashua 1, Pgs. 41-42			