

Prepared by & Return to Herold - Reicks Surveying, 19 East Main Street, New Hampton, IA 50659, Ph. 641-394-2725

UNITED STATES PUBLIC LAND SURVEY CORNER CERTIFICATE

Land Survey Monuments situated in Section ⁶7, Township 94 North, Range 14 West of the Fifth Principal Meridian, Chickasaw County, Iowa. 1.) Previously recorded in Bk. 167, Pg. 71 in the County Recorder's office. 2.) Previously recorded in Bk. 167, Pg. 72 in the County Recorder's office.

This certificate is being prepared in compliance with Iowa Code Chapter 355.11 because:

- There is no certificate on file for this corner.
- There are no longer three valid ties of record.
- There are changes to reference ties of record.
- 1 & 2 There is change of monumentation of record.
- To clarify description of record monument (ties).

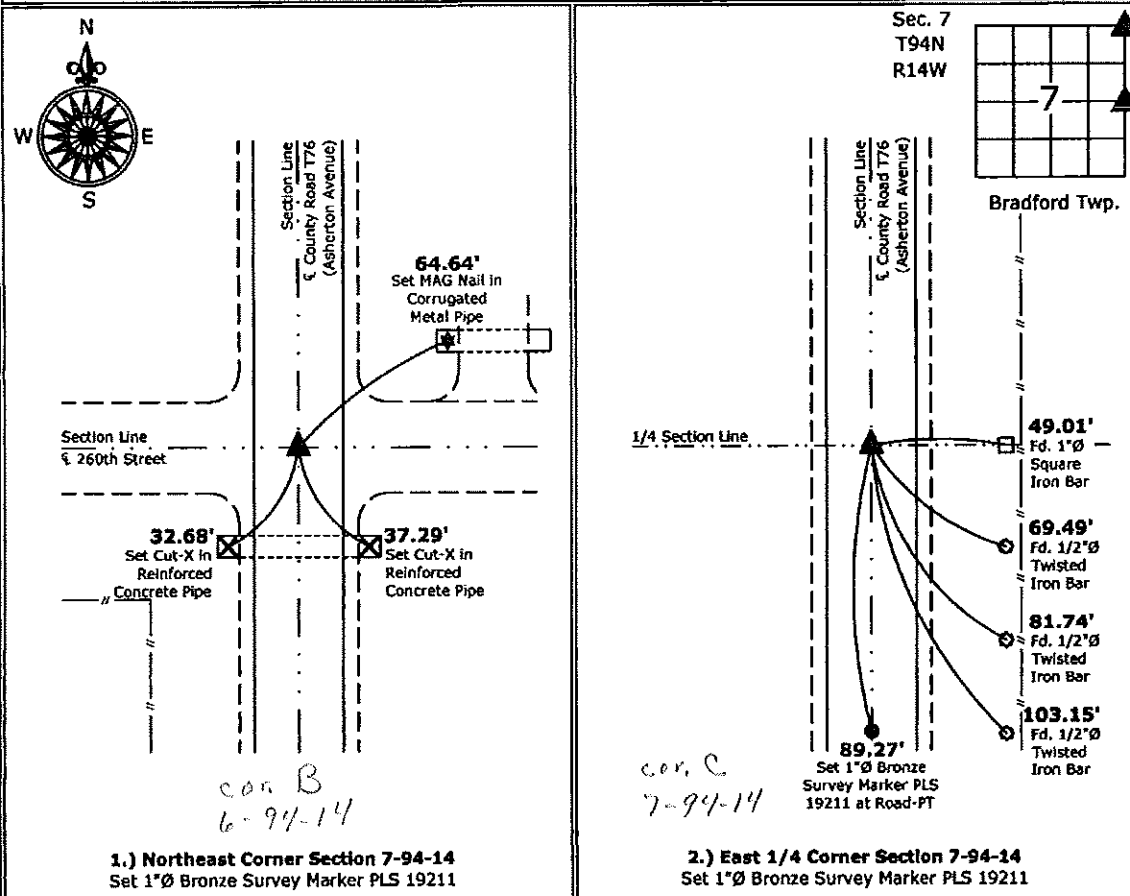
Monument Description and Remarks:

1.) **Northeast Corner:** Set 1"Ø Bronze Survey Marker PLS 19211 at previous location (Found MAG Nail) by means of coordinates obtained prior to highway reconstruction, Project No. STP-S-CO19(80)--5E-19.

2.) **East 1/4 Corner:** Set 1"Ø Bronze Survey Marker PLS 19211 at previous location (Found MAG Nail) by means of coordinates obtained prior to highway reconstruction, Project No. STP-S-CO19(80)--5E-19.

PLAN - VIEW

(Show a minimum of three reference ties to durable physical objects, relevant monuments and physical conditions that will enable recovery of the corner.)



1.) **Northeast Corner Section 7-94-14**
Set 1"Ø Bronze Survey Marker PLS 19211

2.) **East 1/4 Corner Section 7-94-14**
Set 1"Ø Bronze Survey Marker PLS 19211



I hereby certify that this land surveying document was prepared and the related survey work was performed by me or under my direct personal supervision and that I am a duly licensed Land Surveyor under the laws of the State of Iowa.
Kirk D. Reicks 7-5-12
 Kirk D. Reicks Date:
 License number 19211

List Corners to be Indexed			
Corners	Section	Twp.	Range
NE	7	94	14
N 1/4	7	94	14

UNITED STATES PUBLIC LAND SURVEY CORNER CERTIFICATE

OF

Land Survey Monuments situated in Section 7, Township 94 North, Range 14 West, of the Fifth Principal Meridian, CHICKASAW County, Iowa.

Previously recorded in none in County Recorder's Office.
(book, page, document number, etc.)

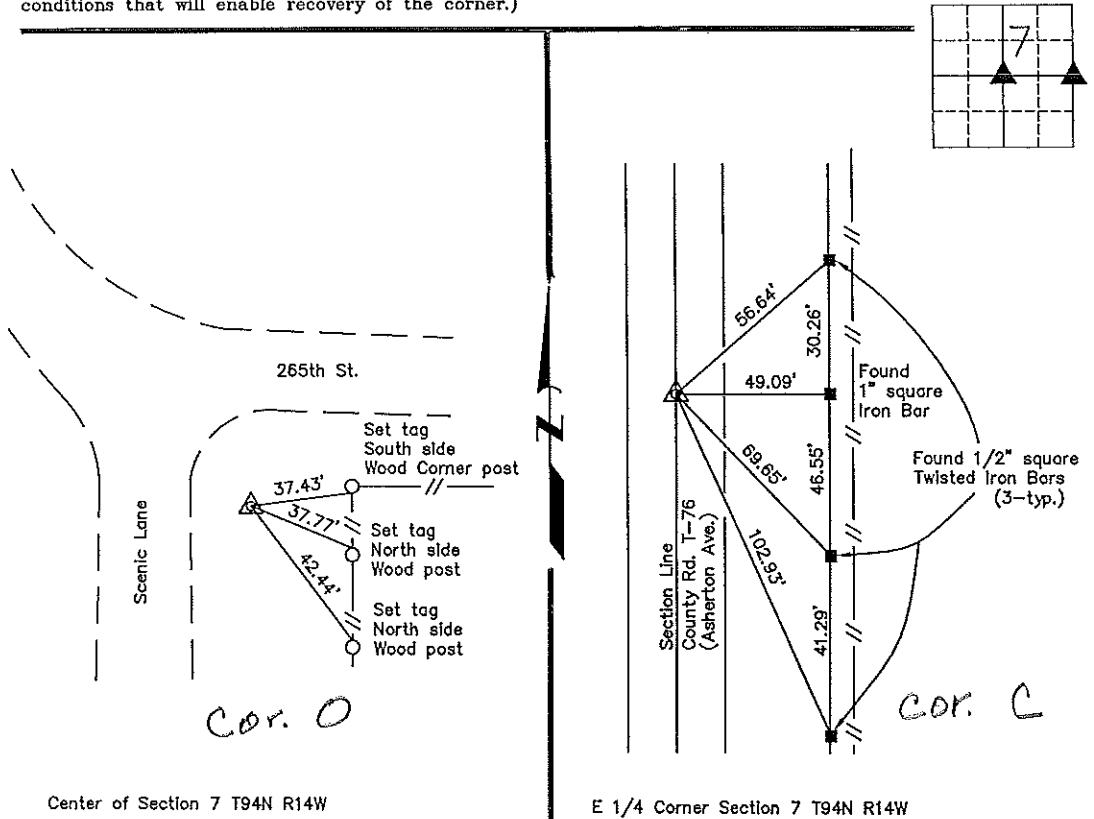
(Show reason for preparing this certificate, the evidence and detailed procedures used in establishing the corner positions and monumentation found or placed.)

Monument Description and Remarks: Center of Section 7 T94N R14W: Found 5/8" ϕ rebar from information on a survey & plat made by William R. Hoover, recorded June 6, 1974, Miscellaneous book "K", pages 434-435.

E 1/4 Corner Section 7 T94N R14W: Set MAG nail from ties obtained from the County Engineer's office in field book "Bradford Township Corner Ties", corner "C"-Section 7.

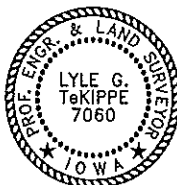
PLAN - VIEW

(Show a minimum of three reference ties to durable physical objects, relevant monuments and physical conditions that will enable recovery of the corner.)



Center of Section 7 T94N R14W

E 1/4 Corner Section 7 T94N R14W



I hereby certify that this land surveying document was prepared and the related survey work was performed by me or under my direct personal supervision and that I am a duly licensed Land Surveyor under the laws of the State of Iowa.

Lyle G. TeKippe 3-6-98
Lyle G. TeKippe Date
License number 7060
My license renewal date is December 31, 1998.
Sheets covered by this seal: Individual

List Corners to be Indexed			
Corners	Section	Twp.	Range
Center	7	94N	14W
E 1/4	7	94N	14W

Cor. C, 7-94-14
Placed in the Book
3/23/98