

UNITED STATES PUBLIC LAND SURVEY CORNER CERTIFICATE

OF

Land Survey Monuments situated in Section 7, Township 94 North, Range 14 West of the Fifth Principal Meridian, CHICKASAW County, Iowa.
 Previously recorded in none in County Recorder's Office.
(book, page, document number, etc.)

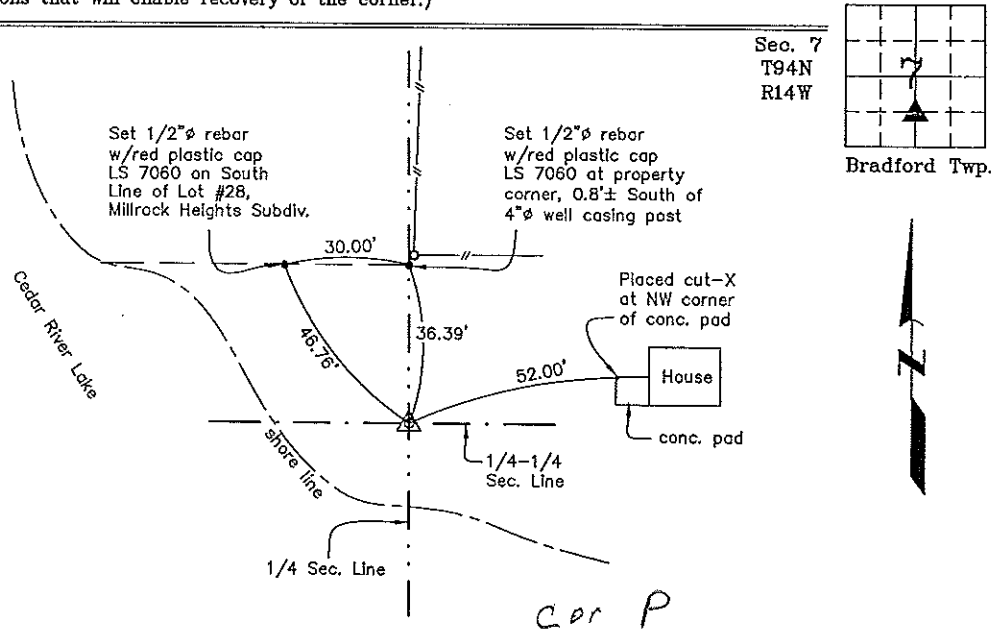
(Show reason for preparing this certificate, the evidence and detailed procedures used in establishing the corner positions and monumentation found or placed.)

Monument Description and Remarks: SE Corner NE 1/4 - SW 1/4 Section 7 T94N R14W
Set 1/2"Ø rebar w/2"Ø aluminum cap LS 7060 at the intersection of the N/S Quarter Section Line and a E/W Quarter-Quarter Section Line after the standard mathematical subdivision of the Section.

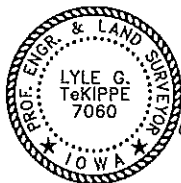
PLAN - VIEW

Project Number 00270.LS
 FB 481 PG. 11-12

(Show a minimum of three reference ties to durable physical objects, relevant monuments and physical conditions that will enable recovery of the corner.)



SE Corner NE 1/4 - SW 1/4 Section 7 T94N R14W
 Set 1/2"Ø rebar w/2"Ø aluminum cap LS 7060



I hereby certify that this land surveying document was prepared by me or under my direct personal supervision and that I am a duly licensed Land Surveyor under the laws of the State of Iowa.
Lyle G. TeKippe 2-16-01
 Lyle G. TeKippe Date
 License number 7060
 My license renewal date is December 31, 2002.
 Sheets covered by this seal: Individual

List Corners to be Indexed			
Corners	Section	Twp.	Range
SE-NE-SW Cor Z	7	94N	14W

Placed in book 3-19-01

2001-290

County Engineer's
 Order