

Section 7-94-14  
As referred to in  
Eng. Tie Book

TeKIPPE ENGINEERING, P.C., 128 South Vine Street, West Union, Iowa 52175 Phone (319) 422-5131

UNITED STATES PUBLIC LAND SURVEY CORNER CERTIFICATE

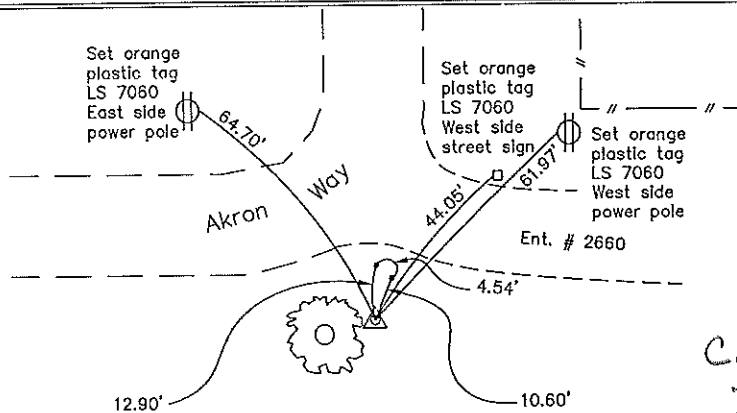
OF 7  
Land Survey Monuments situated in Section 8, Township 94 North, Range 14 West, of the Fifth Principal Meridian, CHICKASAW County, Iowa.  
Previously recorded in none in County Recorder's Office.  
(book, page, document number, etc.)

(Show reason for preparing this certificate, the evidence and detailed procedures used in establishing the corner positions and monumentation found or placed.)

Monument Description and Remarks: SW Corner NW 1/4-SW 1/4 Section 8 T94N R14W:  
Set 1/2"Ø rebar w/2"Ø aluminum cap LS 7060 equidistant and on line between the SW corner and the W 1/4 corner of Section 8.

PLAN - VIEW

(Show a minimum of three reference ties to durable physical objects, relevant monuments and physical conditions that will enable recovery of the corner.)



Cor B1  
7-94-14

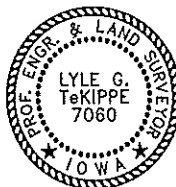
Found 5/8"Ø rebar set by D. H. Miller as shown on a Survey and Plat made in the Chickasaw County Recorder's Office on October 17, 1968 in Book 97, Page 248.

Found 5/8"Ø rebar w/yellow plastic cap LS 7549 set by T.V. Kraft as shown on a Survey and Plat recorded in the Chickasaw County Recorder's Office on July 23, 1984 in Book 132, Page 409.

The rebar was also used on a Survey and Plat made by Terry D. Van Laningham as recorded in the Chickasaw County Recorder's Office on September 10, 1997 in Deed Book 165, Page 147.

The rebar was also used on a Survey and Plat made by L. P. Erdman as recorded in the Chickasaw County Recorder's Office on February 14, 1994 in Deeds Book 154, Page 115.

SW Corner NW 1/4-SW 1/4 Section 8 T94N R14W  
Set 1/2"Ø rebar w/2"Ø aluminum cap LS 7060



I hereby certify that this land surveying document was prepared and the related survey work was performed by me or under my direct personal supervision and that I am a duly licensed Land Surveyor under the laws of the State of Iowa.

*Lyle G. TeKippe* 7-22-99  
Lyle G. TeKippe Date  
License number 7060  
My license renewal date is December 31, 2000.  
Sheets covered by this seal: Individual

List Corners to be Indexed			
Corners	Section	Twp.	Range
SW-NW-SW	8	94N	14W

Cor B1 7-94-14  
Placed in tie book 7/27/99