

Section 6-94-14  
As referred to in  
Engr. Tie Book

TeKIPPE ENGINEERING, P.C., 128 South Vine Street, West Union, Iowa 52175 Phone (319) 422-5131

UNITED STATES PUBLIC LAND SURVEY CORNER CERTIFICATE

OF 6

Land Survey Monuments situated in Section 7, Township 94 North, Range 14 West, of the Fifth Principal Meridian, CHICKASAW County, Iowa. Previously recorded in none in County Recorder's Office. (book, page, document number, etc.)

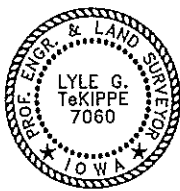
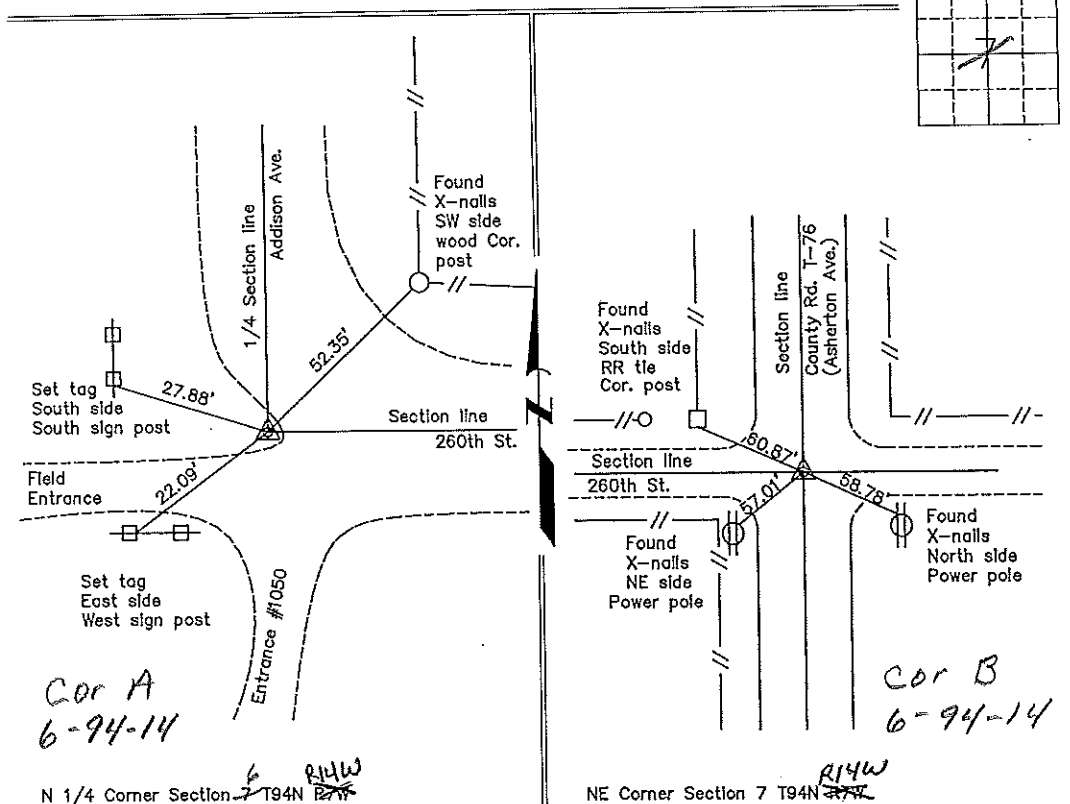
(Show reason for preparing this certificate, the evidence and detailed procedures used in establishing the corner positions and monumentation found or placed.)

Monument Description and Remarks: N 1/4 Corner Section 7 T94N R14W: Found 5/8"  $\phi$  rebar from information on a survey and plat made by William R. Hoover, recorded June 6, 1974, Miscellaneous book "K", pages 434-435.

NE Corner Section 7 T94N R14W: Found PK nail from ties obtained from the County Engineer's office, in field book "Bradford Township Corner Ties", corner "B"-Section 6.

PLAN - VIEW

(Show a minimum of three reference ties to durable physical objects, relevant monuments and physical conditions that will enable recovery of the corner.)



I hereby certify that this land surveying document was prepared and the related survey work was performed by me or under my direct personal supervision and that I am a duly licensed Land Surveyor under the laws of the State of Iowa.

*Lyle G. TeKippe* 3-6-98  
Lyle G. TeKippe Date  
License number 7060  
My license renewal date is December 31, 1998.  
Sheets covered by this seal: Individual

List Corners to be Indexed

Corners	Section	Twp.	Range
N 1/4	7	94N	14W
Cor A	6-94-14		
NE	7	94N	14W
Cor B	6-94-14		

Placed in Tie Book  
3/23/98