

Prepared by & Return to Herold - Reicks Surveying, 19 East Main Street, New Hampton, IA 50659, Ph. 641-394-2725

**UNITED STATES PUBLIC LAND SURVEY CORNER CERTIFICATE**

Land Survey Monuments situated in Section <sup>6</sup>7, Township 94 North, Range 14 West of the Fifth Principal Meridian, Chickasaw County, Iowa. 1.) Previously recorded in Bk. 167, Pg. 71 in the County Recorder's office. 2.) Previously recorded in Bk. 167, Pg. 72 in the County Recorder's office.

This certificate is being prepared in compliance with Iowa Code Chapter 355.11 because:

- There is no certificate on file for this corner.
- There are no longer three valid ties of record.
- There are changes to reference ties of record.
- 1 & 2  There is change of monumentation of record.
- To clarify description of record monument (ties).

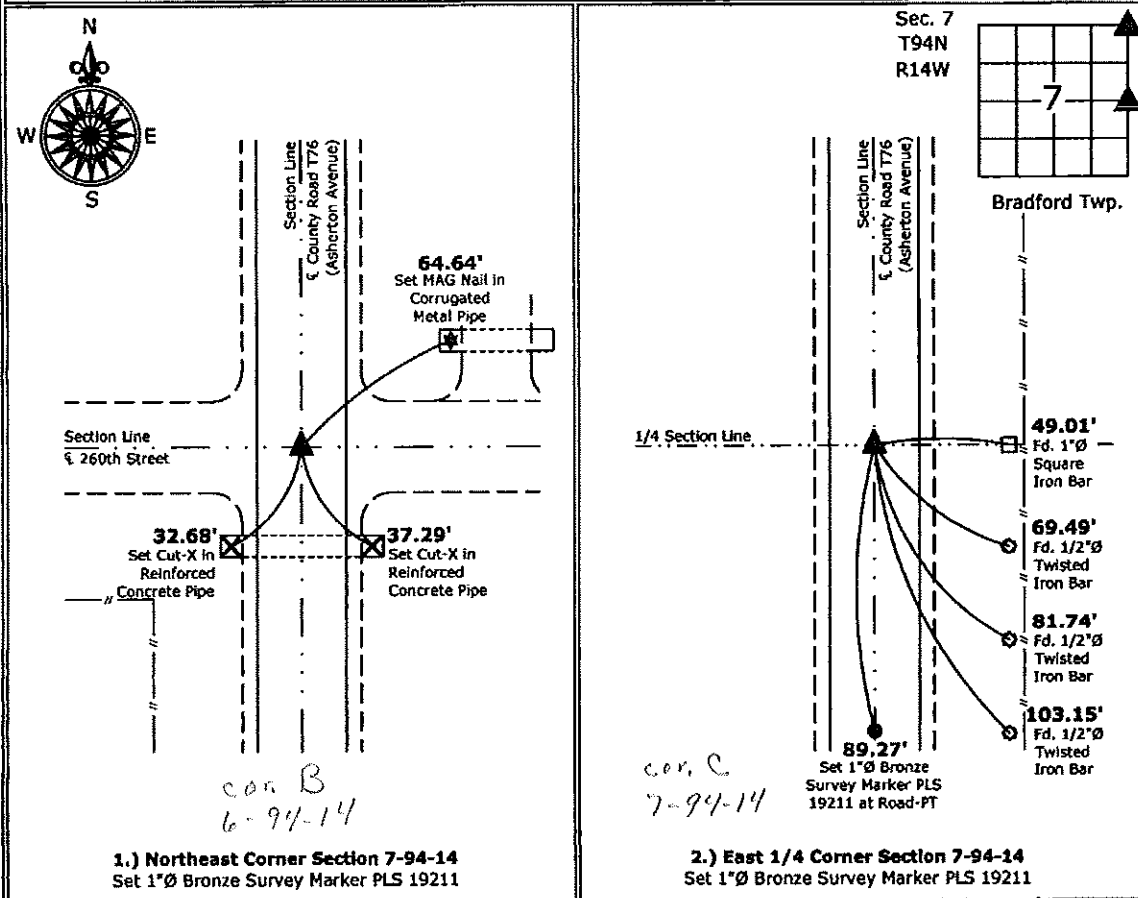
**Monument Description and Remarks:**

1.) **Northeast Corner:** Set 1"Ø Bronze Survey Marker PLS 19211 at previous location (Found MAG Nail) by means of coordinates obtained prior to highway reconstruction, Project No. STP-S-CO19(80)--5E-19.

2.) **East 1/4 Corner:** Set 1"Ø Bronze Survey Marker PLS 19211 at previous location (Found MAG Nail) by means of coordinates obtained prior to highway reconstruction, Project No. STP-S-CO19(80)--5E-19.

**PLAN - VIEW**

(Show a minimum of three reference ties to durable physical objects, relevant monuments and physical conditions that will enable recovery of the corner.)



I hereby certify that this land surveying document was prepared and the related survey work was performed by me or under my direct personal supervision and that I am a duly licensed Land Surveyor under the laws of the State of Iowa.  
*Kirk D. Reicks 7-5-12*  
 Kirk D. Reicks Date:  
 License number 19211

List Corners to be Indexed			
Corners	Section	Twp.	Range
NE	7	94	14
N 1/4	7	94	14

Section 6-94-14  
 As referred to in  
 Engr. Tie Book

TeKIPPE ENGINEERING, P.C., 128 South Vine Street, West Union, Iowa 52175 Phone (319) 422-5131

UNITED STATES PUBLIC LAND SURVEY CORNER CERTIFICATE

OF 6

Land Survey Monuments situated in Section 7, Township 94 North, Range 14 West, of the Fifth Principal Meridian, CHICKASAW County, Iowa. Previously recorded in none in County Recorder's Office. (book, page, document number, etc.)

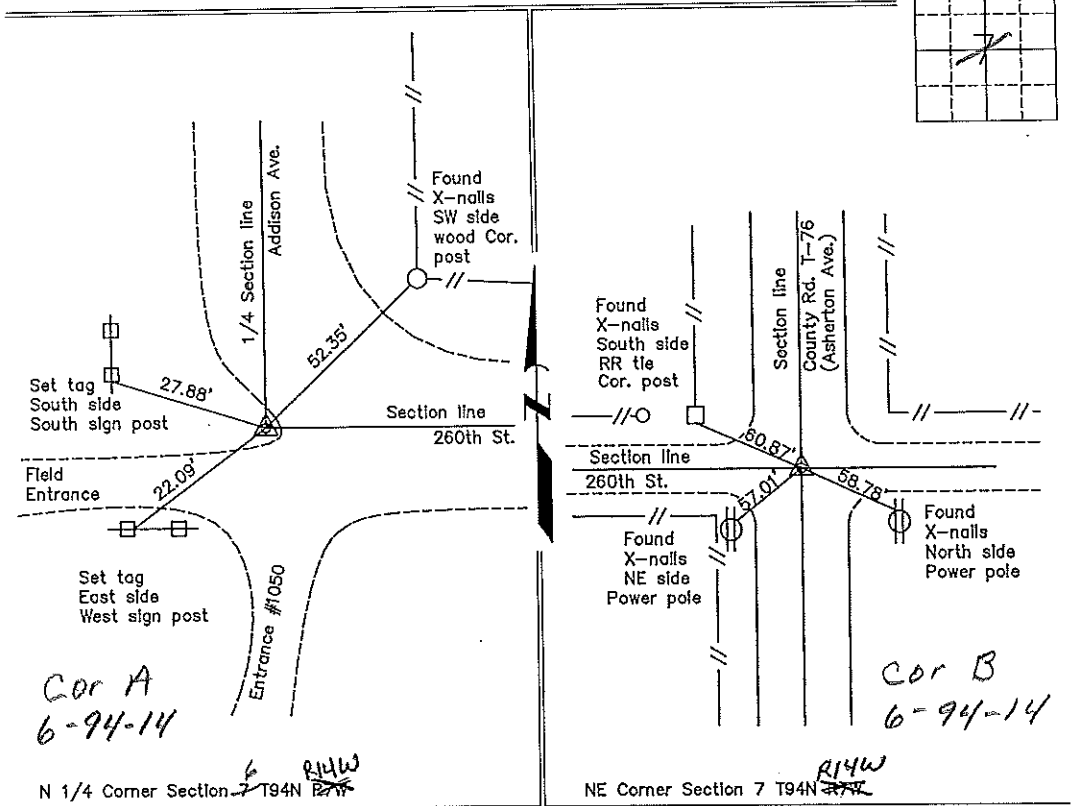
(Show reason for preparing this certificate, the evidence and detailed procedures used in establishing the corner positions and monumentation found or placed.)

Monument Description and Remarks: N 1/4 Corner Section 7 T94N R14W: Found 5/8"  $\phi$  rebar from information on a survey and plat made by William R. Hoover, recorded June 6, 1974, Miscellaneous book "K", pages 434-435.

NE Corner Section 7 T94N R14W: Found PK nail from ties obtained from the County Engineer's office, in field book "Bradford Township Corner Ties", corner "B"-Section 6.

PLAN - VIEW

(Show a minimum of three reference ties to durable physical objects, relevant monuments and physical conditions that will enable recovery of the corner.)



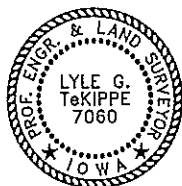
Cor A  
 6-94-14

Cor B  
 6-94-14

N 1/4 Corner Section 7 T94N R14W

NE Corner Section 7 T94N R14W

I hereby certify that this land surveying document was prepared and the related survey work was performed by me or under my direct personal supervision and that I am a duly licensed Land Surveyor under the laws of the State of Iowa.



*Lyle G. TeKippe* 3-6-98  
 Lyle G. TeKippe Date  
 License number 7060  
 My license renewal date is December 31, 1998.  
 Sheets covered by this seal: Individual

List Corners to be Indexed			
Corners	Section	Twp.	Range
N 1/4	7	94N	14W
Cor A	6-94-14		
NE	7	94N	14W
Cor B	6-94-14		

Placed in Tie Book  
 3/23/98