

CINDY MESSERSMITH  
 CHICKASAW CO. RECORDER

TeKIPPE ENGINEERING, P.C., 128 South Vine Street, West Union, Iowa 52175 Phone (563) 422-5131

UNITED STATES PUBLIC LAND SURVEY CORNER CERTIFICATE

OF

Land Survey Monuments situated in Section 7, Township 94 North, Range 14 West of the Fifth Principal Meridian, CHICKASAW County, Iowa.

Previously recorded in none in County Recorder's Office.  
 (book, page, document number, etc.)

(Show reason for preparing this certificate, the evidence and detailed procedures used in establishing the corner positions and monumentation found or placed.)

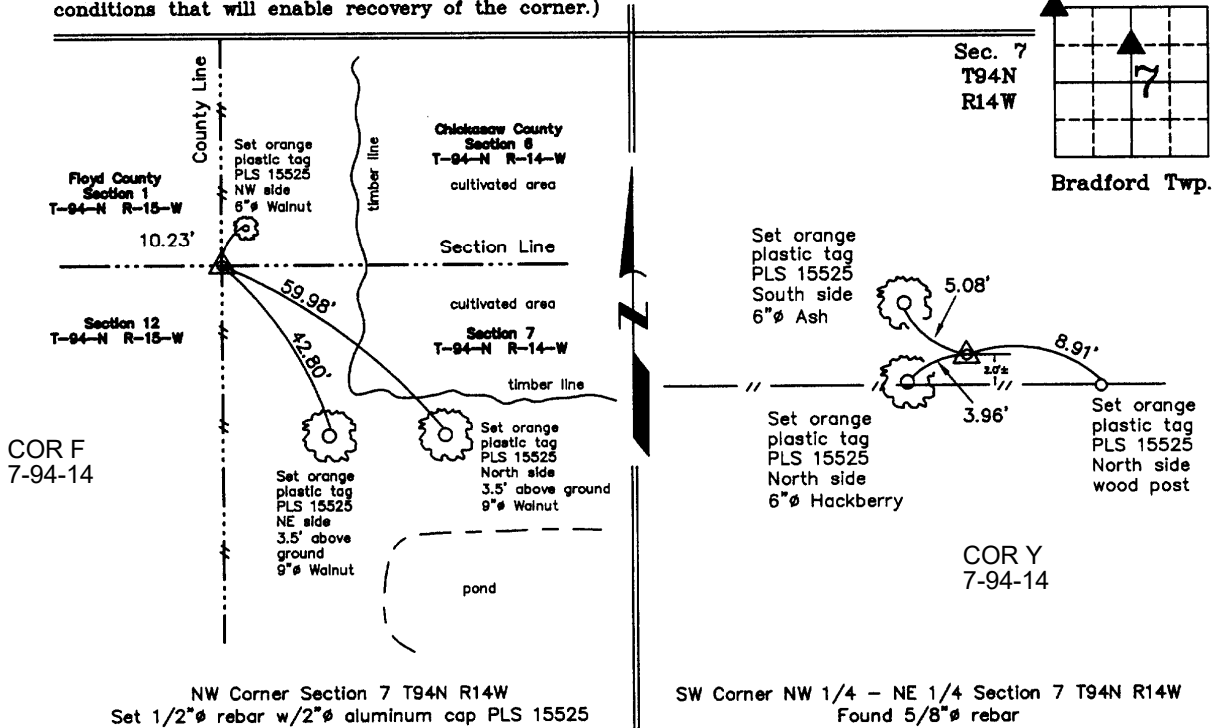
Monument Description and Remarks: NW Corner Section 7 T94N R14W: Set 1/2" ø rebar w/2" ø aluminum cap PLS 15525 by doubling a line from the W 1/4 Corner to and across the calculated position of the SW Corner NW 1/4-NW 1/4. The SW-NW-NW was calculated using the position of the SW Corner NW 1/4-NE 1/4 and extending a line across the found monuments of the North line of Millrock Heights Subdivision. The calculated position of SW-NW-NW places it in Cedar Lake.

SW Corner NW 1/4 - NE 1/4 Section 7 T94N R14W: Found 5/8" ø rebar with information obtained from a Survey and Plat made by L. W. Kehe recorded in the Chickasaw County Recorder's Office June 6, 1974 in Miscellaneous Book K, Pages 434-435.

PLAN - VIEW

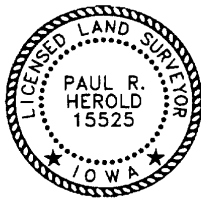
Project Number 03060.LS  
 FB. Nashua 1 PG. 6-11

(Show a minimum of three reference ties to durable physical objects, relevant monuments and physical conditions that will enable recovery of the corner.)



COR F  
 7-94-14

COR Y  
 7-94-14



I hereby certify that this land surveying document was prepared and the related survey work was performed by me or under my direct personal supervision and that I am a duly licensed Land Surveyor under the laws of the State of Iowa.

*Paul R. Herold* 4-30-03  
 Paul R. Herold Date  
 License number 15525  
 My license renewal date is December 31, 2004.  
 Sheets covered by this seal: Individual

List Corners to be Indexed			
Corners	Section	Twp.	Range
NW	7	94N	14W
SW-NW-NE	7	94N	14W