

2004 JUN 28 AM 9 19

CINDY MESSERSMITH
 COUNTY RECORDER

TeKIPPE ENGINEERING, P.C., 128 South Vine Street, West Union, Iowa 52175 Phone (683) 422-6131

UNITED STATES PUBLIC LAND SURVEY CORNER CERTIFICATE

OF

Land Survey Monuments situated in Section 7, Township 94 North, Range 14 West of the Fifth Principal Meridian, CHICKASAW County, Iowa. Previously recorded in none in County Recorder's Office. (book, page, document number, etc.)

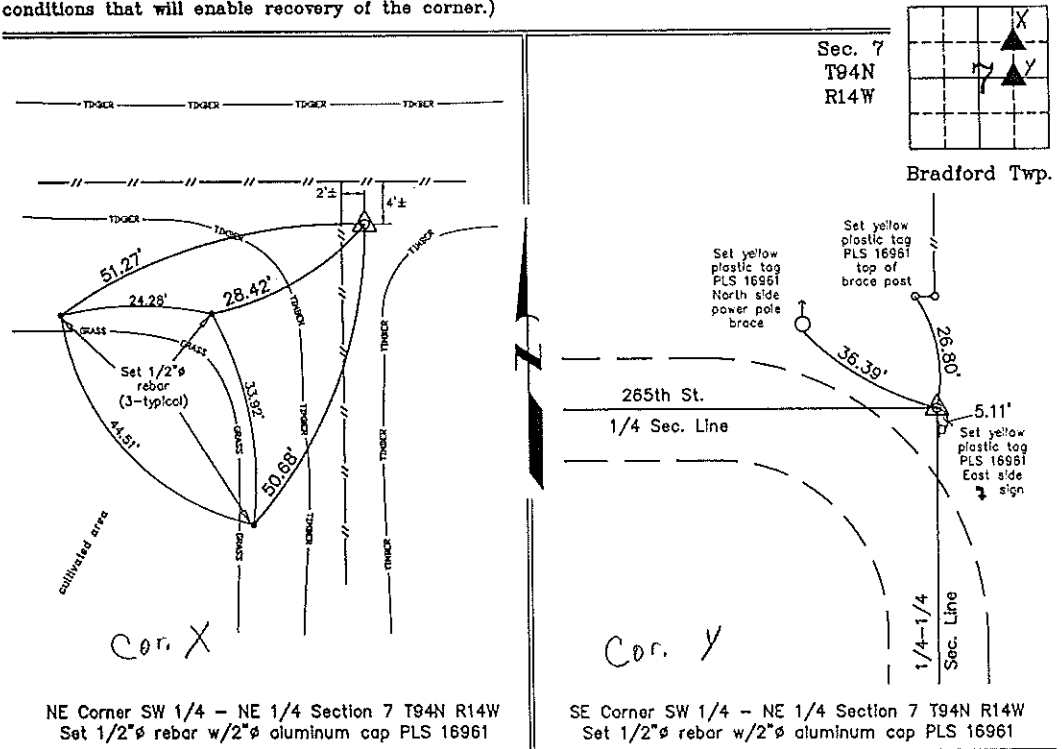
(Show reason for preparing this certificate, the evidence and detailed procedures used in establishing the corner positions and monumentation found or placed.)

Monument Description and Remarks: NE Corner SW 1/4 - NE 1/4 Section 7 T94N R14W:
Set 1/2"Ø rebar w/2"Ø aluminum cap PLS 16961 at the intersection of 1/4-1/4 Section Lines after the standard subdivision of the NE 1/4.

SE Corner SW 1/4 - NE 1/4 Section 7 T94N R14W: Set 1/2"Ø rebar w/2"Ø aluminum cap PLS 16961 equidistant and on line between the E 1/4 Corner and the Center of the Section.

PLAN - VIEW

(Show a minimum of three reference ties to durable physical objects, relevant monuments and physical conditions that will enable recovery of the corner.)



NE Corner SW 1/4 - NE 1/4 Section 7 T94N R14W
 Set 1/2"Ø rebar w/2"Ø aluminum cap PLS 16961

SE Corner SW 1/4 - NE 1/4 Section 7 T94N R14W
 Set 1/2"Ø rebar w/2"Ø aluminum cap PLS 16961



I hereby certify that this land surveying document was prepared by me or under my direct personal supervision and that I am a duly licensed Land Surveyor under the laws of the State of Iowa.

Michael J. Shimak June 21, 2004
 Michael J. Shimak Date

License number 16961
 My license renewal date is December 31, 2005.
 Sheets covered by this seal: Individual

List Corners to be Indexed

Corners	Section	Twp.	Range
NE-SW-NE	7	94N	14W
SE-SW-NE	7	94N	14W

X:\Section Corners\Sec. 07\7-94-14in.dwg
 Project Number 04133.LS
 FE Nashua #1 PG. 18-10