

PREPARED BY KENNETH D. STARK 1622 SOUTH TAFT AVENUE, MASON CITY, IOWA 50401 (641) 423-7947

## UNITED STATES PUBLIC LAND SURVEY CORNER CERTIFICATE OF

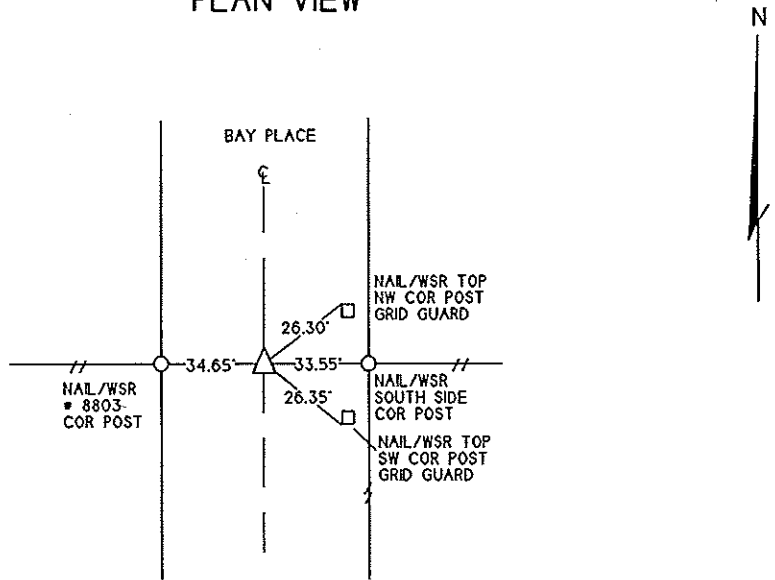
LAND SURVEY MONUMENTS SITUATED IN SECTION 8, TOWNSHIP 94N, RANGE 14W, OF THE 5th PRINCIPAL MERIDIAN  
CHICKASAW COUNTY, IOWA PREVIOUSLY RECORDED IN BOOK 150, PAGE 245 IN COUNTY RECORDER'S OFFICE.

MONUMENT DESCRIPTION AND REMARKS:

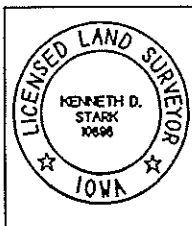
CENTER - FOUND 1/2" TWIST SQUARE IRON BAR FLUSH PER BOOK 150 PAGE 245

REASON FOR CERT: TIES DIFFER FROM STATED CERTIFICATE OF RECORD

### PLAN VIEW



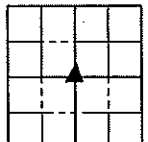
COR. 0  
8-94-14



I HEREBY HEREBY CERTIFY THAT THIS LAND SURVEYING DOCUMENT WAS PREPARED AND THE RELATED SURVEY WAS PERFORMED BY ME OR UNDER MY PERSONAL SUPERVISION AND THAT I AM A DULY LICENSED LAND SURVEYOR IN THE STATE OF IOWA.

*Kenneth D. Stark* 12-12-08  
KENNETH D. STARK DATE  
LICENSE NUMBER 10198  
MY LICENSE RENEWAL DATE IS DECEMBER 31, 2009  
PAGES OR SHEETS COVERED BY THIS SEAL 1

LIST OF CORNERS TO BE INDEXED			
CORNERS	SECTION	TWP	RANGE
CENTER	8	94	14



# UNITED STATES PUBLIC LAND SURVEY CORNER CERTIFICATE

OF

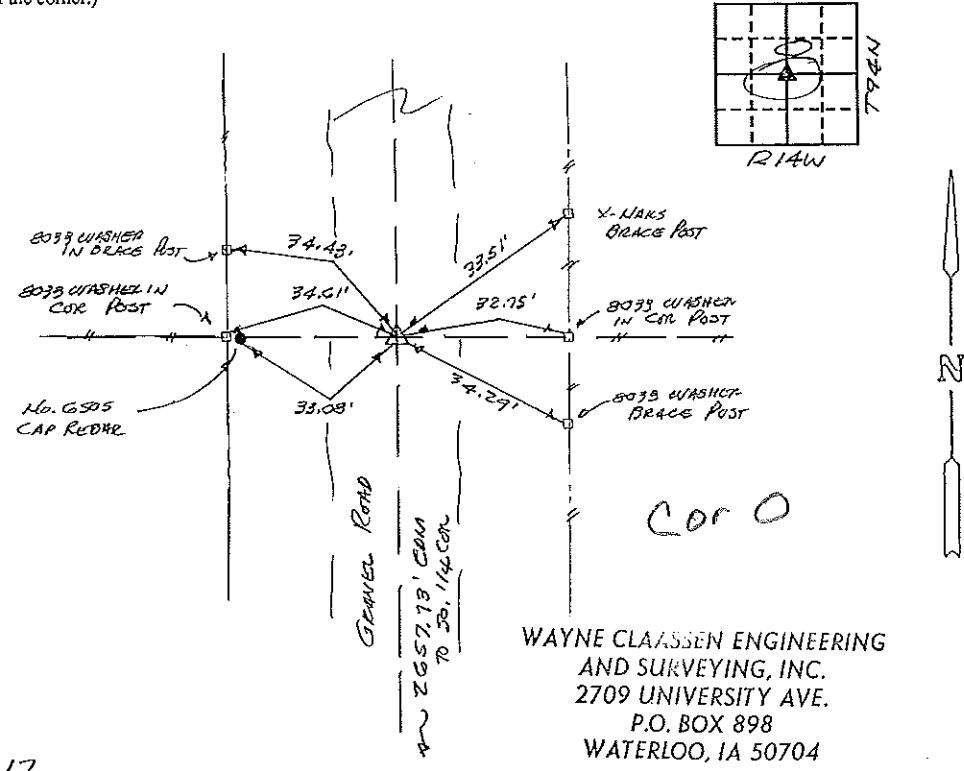
Land Survey Monuments situated in Section 8, Township 74N, Range 14W, of the Fifth Principal Meridian, CHICKASAW County, Iowa. Previously recorded in N/A in County Recorder's Office.

(Show reason for preparing this certificate, the evidence and detailed procedures used in establishing the corner positions and monumentation found or placed.)

Monument Description and Remarks: FOUND 1 1/2" Ø RED OAK FLUSH WITH SURFACE OF GRAVEL ROAD PER COUNTY TIES.

### PLAN - VIEW

(Show a minimum of three reference ties to durable physical objects, relevant monuments and physical conditions that will enable recovery of the corner.)



WAYNE CLAASSEN ENGINEERING AND SURVEYING, INC.  
2709 UNIVERSITY AVE.  
P.O. BOX 898  
WATERLOO, IA 50704

367-17

I hereby certify that the survey work was completed and this certificate was prepared by me or under my direct personal supervision and that I am a duly registered land surveyor under the laws of the state of Iowa.

Signature: F. William King  
Name typed or printed: F. WILLIAM KING  
Date: 9-2-1992 Reg. No. 8033



Corners	Section	Twp	Range
CENTER	8	74N	14W

Corner 0 8-94-14  
Placed in tie  
Book 9/2/92