

Return to & Prepared By: Ryland R. Benzing, P.L.S. #22572 Benzing Surveying, LLC
 808 5th Ave. SW Waukon, Iowa 52172 Phone: (563) 568-2136

UNITED STATES PUBLIC LAND SURVEY CORNER CERTIFICATE

OF

Land Survey Monuments situated in Section 9, Township 94 North, Range 14 West, of the Fifth Principal Meridian, Chickasaw County, Iowa.
 Previously recorded in 1) (No Record) 2) (No Record) in County Recorder's Office.

(book, page, document number, etc.)

(Show reason for preparing this certificate, the evidence and detailed procedures used in establishing the corner positions and monumentation found or placed.) Monument Description and Remarks:

1) West 1/4 Corner Section 9

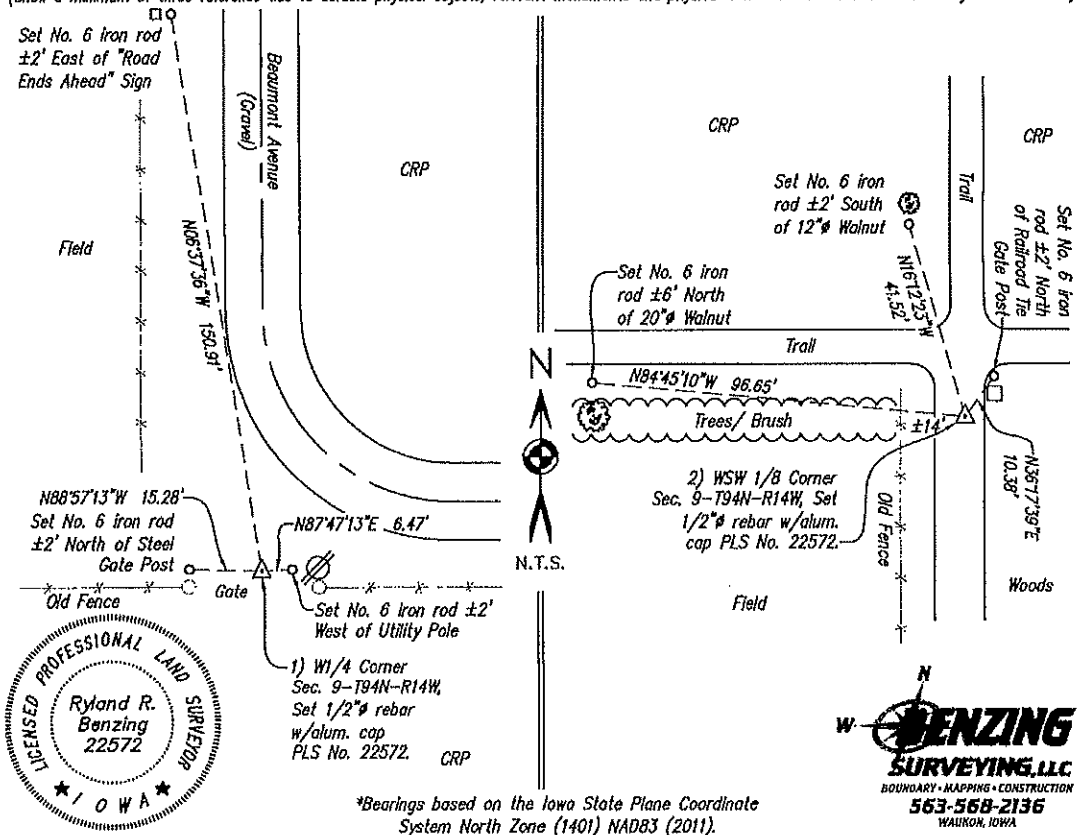
Searched area with a magnetic locator, shovel, and stone probe. Found a large nail/spike in the area that lined up with centerline of road running north from corner and was located approximately 2' north of an east-west fence. We were not able to determine origin of the nail, but its location fit occupational evidence better than the theoretical location. Set 1/2" x 24" rebar with 2-1/2" aluminum cap PLS No. 22572 at the location of the found nail.

2) West-Southwest 1/8 Corner Section 9

Computed a position on line and at proportionate distance between the W1/4 and SW Corner of Section 9. Searched area with a magnetic locator, shovel, and stone probe, but found nothing. Set 1/2" x 24" rebar with 2-1/2" aluminum cap PLS No. 22572 at computed position.

PLAN - VIEW

(Show a minimum of three reference ties to durable physical objects, relevant monuments and physical conditions that will enable recovery of the corner.)



Cor C
 Sec. 8-94-14

Cor B1
 Sec. 8-94-14

*Bearings based on the Iowa State Plane Coordinate System North Zone (1401) NAD83 (2011).



I hereby certify that this land surveying document was prepared and the related survey work was performed by me or under my direct personal supervision and that I am a duly licensed Professional Land Surveyor under the laws of the State of Iowa.

Ryland R. Benzing Date: 2-15-21
 Ryland R. Benzing, PLS No. 22572
 My license renewal date is December 31, 2022
 Pages or sheets covered by this seal: 1 of 1

Corner(s) to be Indexed

Corner	Section	Twp	Range
W1/4 Cor.	09	94N	14W
WSW1/8 Cor.	09	94N	14W

