

2006-0846

Scott A. Steinfadt LS, Ryken Engineering, 403 N. Monroe, P.O. Box 1352, Mason City, Ia. 50401 - Ph 641-423-1461

UNITED STATES PUBLIC LAND SURVEY CORNER CERTIFICATE

OF

Land Survey Monuments situated in Section 5, Township 94 North, Range 14 West, of the Fifth Principal Meridian, Chickasaw County, Iowa, Previously recorded in Bk 2000 Pg 0037 in County Recorder's Office

(Show reason for preparing this certificate, the evidence and detailed procedures used in establishing the corner positions and monumentation found or set.)

Monument Description and Remarks:

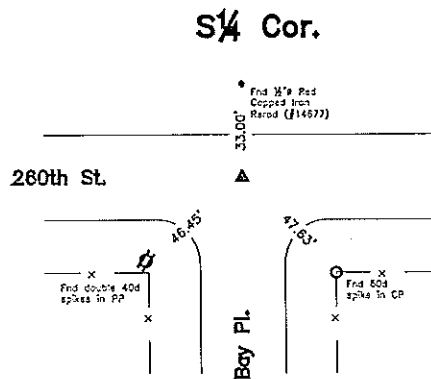
S $\frac{1}{4}$ Cor. - History of Corner = No Date - 'STONE' per Chickasaw Co Engr's Surv Records.
 2000, 1/4 - 'drill rod' per Chickasaw Co Rec's Bk 2000 Pg 0038.
 2000, 1/4 - Chickasaw Co Rec's Bk 2000 Pg 0037 indicates usage of corner but does not indicate type of monumentation at corner.
 Current Co Engr's records indicate that corner is monumented with 'Stone' and 'Iron Pin' on '4-25-52' with ties as shown below.

Corner Recovery = Searched area with metal detector and excavated 0.5' x 0.5' x 0.5' deep hole and found $\frac{1}{2}$ " square twisted iron rebar 0.3' deep in centerline of gravel roads E-W & S. Monument found matches that of record and record ties are within reason. Therefore, used rebar as the correct corner. All ties are plumb distance unless indicated otherwise.

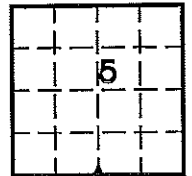
This certificate is being prepared because there are no longer three valid ties of record and this corner was used for a survey in this section for Daniel D. & Maria E. Janssen.

Plan View

(Show a minimum of three reference ties to durable physical objects, relevant monuments, and physical conditions that will enable recovery of the corner.)

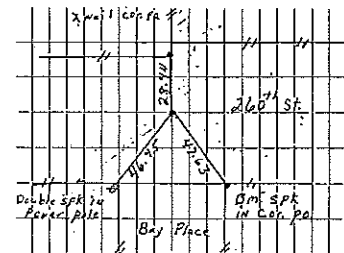


- Legend**
- BC = Nail w/ Bottle Cap
 - BP = Brass Post
 - CP = Corner Post
 - CM = 4" Sq Concrete Monument w/ 1/2" Iron rebar in center (tie to rebar)
 - CX = Cut X
 - CP = Cota Post
 - GP = Nail w/ Green Plastic Washer
 - PP = Power Pole
 - RI = Red Head (Nail in wire)
 - SFP = Steel Fence Post
 - RW = Nail w/ Reflective Round Washer
 - R/W = Iron ROW Nail
 - SM = Nail w/ Yellow Plastic Survey Marker
 - SW = Nail w/ Square Metal Washer
 - TP = Telephone Pedestal
 - TW = Nail w/ Round Metal Washer
 - WFP = Wood fence Post
 - X = X Nails



CO ENGR'S RECORD TIES

Stone
IRON PIN 4-25-52



Cor A



I hereby certify that this land surveying document was prepared and the related survey work was performed by me or under my direct personal supervision and that I am a duly licensed Land Surveyor, under the laws of the State of Iowa.

Scott A. Steinfadt

SCOTT A. STEINFADT, LS
 Date: 4-14-06 License number: 14677
 My license renewal date is December 31, 2008

Pages or sheets covered by this seal: 1

List Corners to be indexed

Corners	Section	Twp	Range
S $\frac{1}{4}$ Cor.	5	T94N	R14W

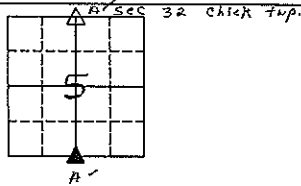
PREPARED BY - S & S LAND SURVEYING, INC., 118 W BREMER AVE., PO BOX 148, WAVERLY, IOWA 50877 - PHONE 319-352-8444

UNITED STATES PUBLIC LAND SURVEY CORNER CERTIFICATE

OF

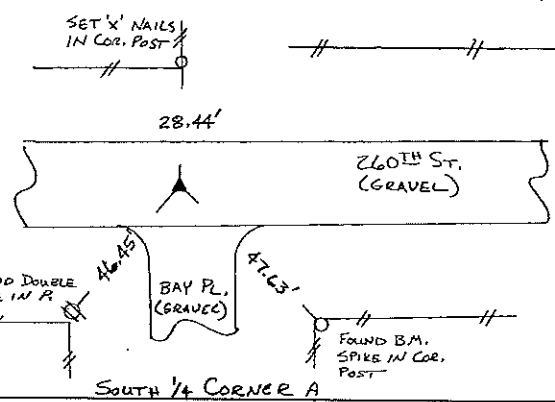
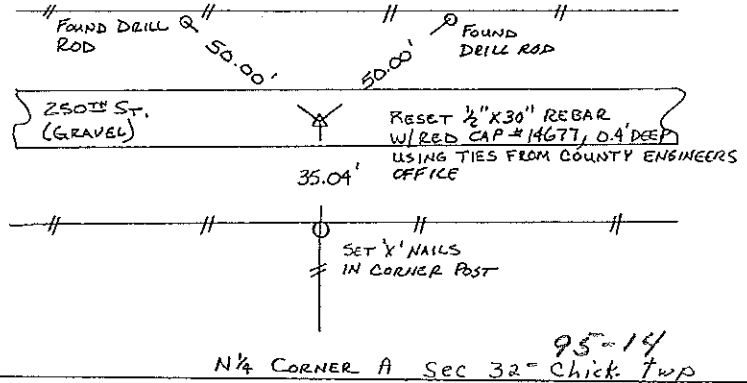
Land Survey Monuments situated in Section 5, Township 94 NORTH, Range 14 WEST, of the Fifth Principal Meridian, CHICKASAW County, Iowa. Previously recorded in Book _____, Page _____.

CORNERS WERE LOCATED FOR LAND SURVEY IN THE SOUTHWEST QUARTER, USING TIES OBTAINED FROM THE CHICKASAW COUNTY ENGINEERS OFFICE. RECORDED TIES FOR THE SOUTHWEST CORNER CHECKED GOOD.



PLAN-VIEW

NO SCALE



I hereby certify that this land surveying document was prepared and the related survey work was performed by me or under my direct personal supervision and that I am a duly Licensed Professional Land Surveyor under the laws of the State of Iowa.

Scott A. Steinfeldt 1/4/00
 Scott A. Steinfeldt, P.L.S. date
 Iowa License No. 14677
 My License Renewal Date is Dec. 31, 2000.

List Corners to be Indexed

Corners	Section	Twp	Range
N $\frac{1}{4}$	cor. A 5	94	14
S $\frac{1}{4}$	cor. A 5 ³²	94 95	14



118 W. BREMER AVE. PO BOX 148
 WAVERLY, IOWA 50877
 (319) 352-8444

2000-0037