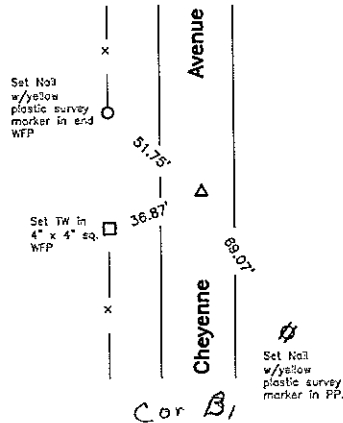


BK 2006-1889

SW Cor. NW $\frac{1}{4}$ SW $\frac{1}{4}$



Cor B
9-95-14

Monument Description, Remarks, and Plan View:

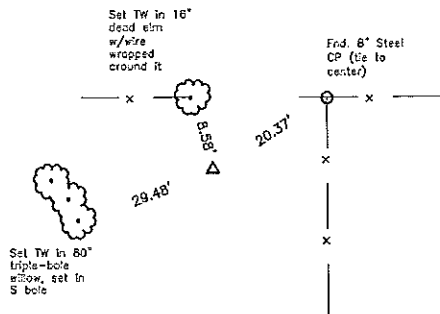
SW Cor. NW $\frac{1}{4}$ SW $\frac{1}{4}$ -

Co Engr's previous and current records do not indicate that corner is monumented.

Corner Recovery = Searched area with metal detector and found nothing, since there is no available record of corner being monumented, set a 3/4" ϕ x 4.0' Alum capped (#14677) iron rered (stamped "1/4 Cor") on-line and equidistance from the W $\frac{1}{4}$ Cor and the SW Cor. Monument is 1.0' \pm E of centerline of gravel road N-S and in-line with treeline W and 32.0' E of fenceline remnants N-S. Rered is 0.3' deep. All ties are plumb distance unless indicated otherwise.

This certificate is being prepared because there are no certificates on file for this corner.

Center



Cor O 10-95-14

Monument Description, Remarks, and Plan View:

Center - History of Corner =

1995, 11-8 - 'Land Corner' per Final Plot found in Co Rec's Bk 159, Pg 318.

Co Engr's previous and current records do not indicate that corner is monumented.

Corner Recovery = 1995 Survey shows Corner was established by intersection of 1/4 Corners E-W and N-S. However no monument was set in 1995. Corner was established using accepted PLSS methods, therefore set a 3/4" ϕ x 4.0' Alum capped (#14677) iron rered (stamped "Center", "10"), to perpetuate monumentation and used as the correct corner. Monument is 6.0' \pm S of fenceline E-W and 20.0' \pm W of fenceline S. Rered is flush. All ties are plumb distance unless indicated otherwise.

This certificate is being prepared because there are no certificates on file for this corner.

Legend

- | | | |
|---|--|------------------------------------|
| BC = Nail with Bottle Cap | ID = Inside Diameter | R/W = Iron ROW Rail |
| BP = Brace Post | OD = Outside Diameter | SFP = Steel 'T' Post |
| CP = Corner Post | PP = Power Pole | SW = Nail with Square Metal Washer |
| CMP = Corrugated Metal Pipe | PW = Nail with Plastic Washer | TP = Telephone Pedestal |
| CM = 4" Sq Concrete Monument with | RCP = Reinforced Concrete Pipe | TW = Nail with Round Metal Washer |
| 1/2" ϕ Iron rered In center (tie to rered) | RH = Red Head (Nail in wire) | WFP = Wood Fence Post |
| CX = Cut 'X' | ROW = Right of Way | X = X Nails |
| GP = Gate Post | RW = Nail with Reflective Round Washer | |

