

UNITED STATES PUBLIC LAND SURVEY CORNER CERTIFICATE

OF 3

Land Survey Monuments situated in Section 10, Township 95 North, Range 14 West, of the Fifth Principal Meridian, CHICKASAW County, Iowa. Previously recorded in NONE in County Recorder's Office.

Section 3-95-14
As referred to in
Engr. Tie Book

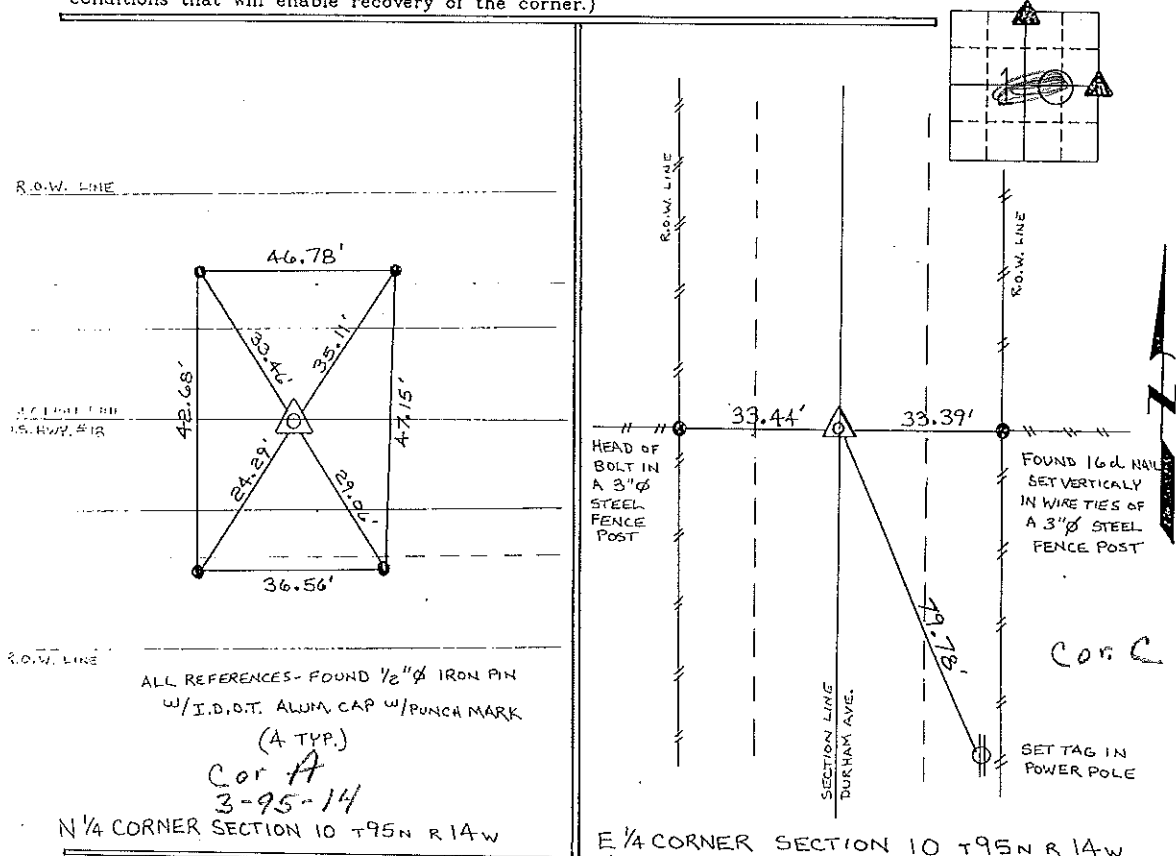
(Show reason for preparing this certificate, the evidence and detailed procedures used in establishing the corner positions and monumentation found or placed.)

Monument Description and Remarks: N 1/4 CORNER SECTION 10 T95N R 14W: FOUND I.D.O.T. ALUMINUM MONUMENT & U.S. HWY 18.

E 1/4 CORNER SECTION 10 T95N R 14W: SET 1/2" Ø REBAR w/CAP TO GO ON LINE BETWEEN EAST-WEST FENCE LINES, USING TIES OBTAINED FROM COUNTY ENGINEERS RECORDS.

PLAN - VIEW

(Show a minimum of three reference ties to durable physical objects, relevant monuments and physical conditions that will enable recovery of the corner.)



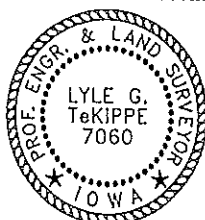
I hereby certify that the survey work was completed and this certificate was prepared by me or under my direct personal supervision and that I am a duly registered land surveyor under the laws of the state of Iowa.

Signature: Lyle G. TeKippe
Lyle G. TeKippe

Date: 8-17-95 Reg. No. 7060

My Registration Renewal Date is December 31, 1996

Seal



Corners	Section	Twp.	Range
N 1/4	10	95N	14W
A	3-95-14		
E 1/4	10	95N	14W
C	10-95-14		

Placed on tie book 9/15/97