

# UNITED STATES PUBLIC LAND SURVEY CORNER CERTIFICATE

OF

Land Survey Monuments situated in Section 10<sup>3</sup>, Township 95N, Range 14W  
of the Fifth Principal Meridian, CHICKASAW County, Iowa.

Previously recorded in NA in County Recorder's Office.  
(book, page, document number, etc.)

(Show reason for preparing this certificate, the evidence and detailed procedures used in establishing the corner positions and monumentation found or placed.)

Monument Description and Remarks: NW CORNER: Replaced previously found SMN/IDOT washer with a SMN/IDOT Sec. Cor. washer, 3.1'+/- North of US 18 per IDOT information of record supplied by New Hampton Office after HMA resurfacing project MP-018-2(707)220--76-19.

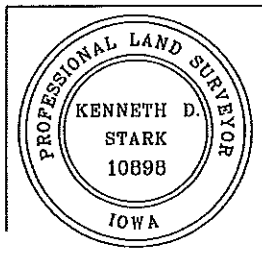
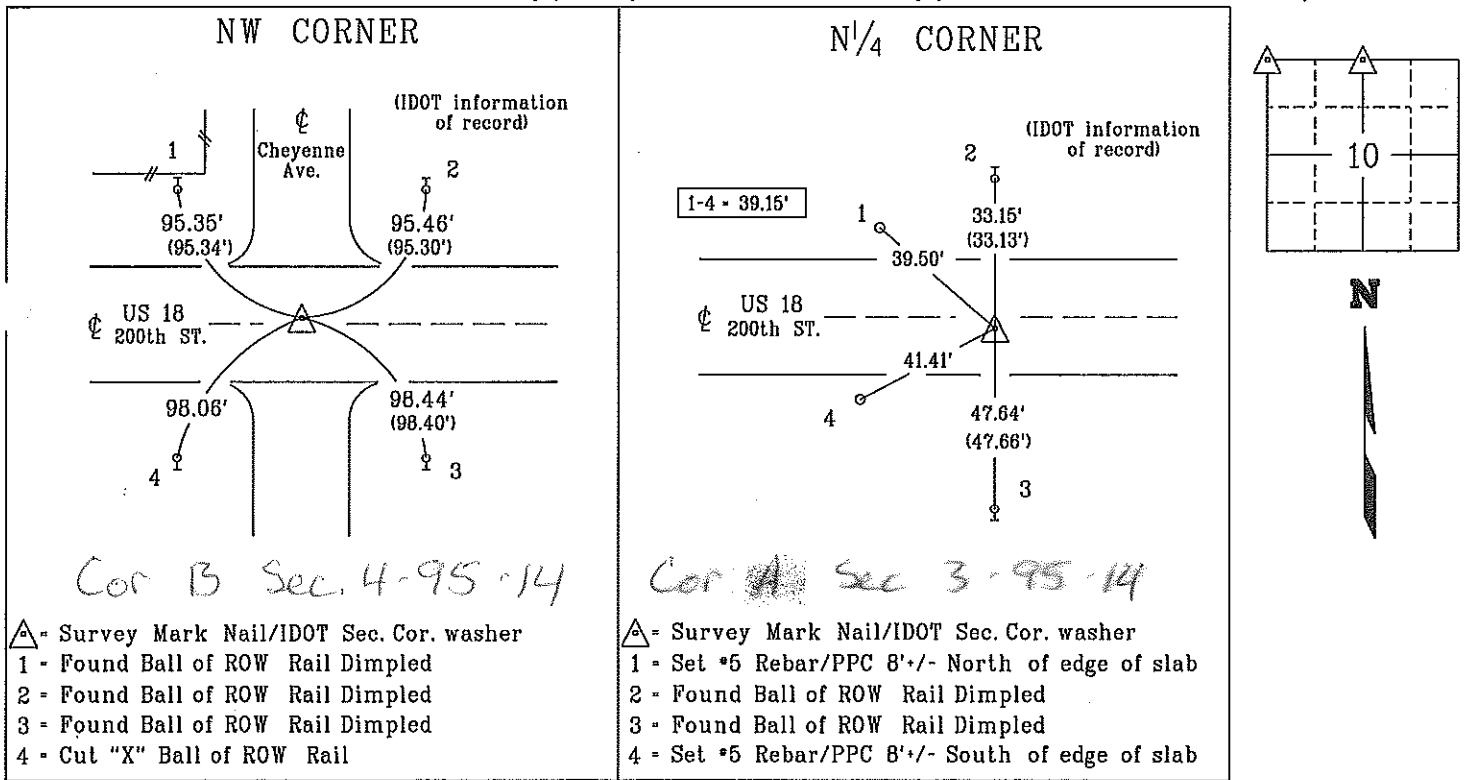
Reason for cert: Monumentation and ties have changed.

N<sup>1</sup>/<sub>4</sub> CORNER: Replaced previously found SMN/IDOT washer with a SMN/IDOT Sec. Cor. washer, 1.2'+/- South of US 18 per IDOT information of record supplied by New Hampton Office after HMA resurfacing project MP-018-2(707)220--76-19.

Reason for cert: Monumentation and ties have changed.

## PLAN - VIEW

(Show a minimum of three reference ties to durable physical objects, relevant monuments and physical conditions that will enable recovery of the corner.)



I hereby certify that this land surveying document was prepared and the related survey work was performed by me or under my personal supervision and that I am duly licensed Land Surveyor under the laws of the state of Iowa.

*Kenneth D. Stark* 03-14-16  
Kenneth-D. Stark Date  
License number 10898  
My License renewal date is December 31, 2017  
Pages or sheets covered by this seal. 1

List Corners to be Indexed			
Corner	Section	Township	Range
NW CORNER	10	95N	14W
N <sup>1</sup> / <sub>4</sub> CORNER	10	95N	14W
SMN - Survey Mark Nail			
PPC - Pink Plastic Cap			

drawn by: cts 02/16

19-10-95-14

filed by: me, cs  
right-of-way

UNITED STATES PUBLIC LAND SURVEY CORNER CERTIFICATE

OF 3

Land Survey Monuments situated in Section 10, Township 95 North, Range 14 West, of the Fifth Principal Meridian, CHICKASAW County, Iowa. Previously recorded in NONE in County Recorder's Office.

Section 3-95-14  
As referred to in  
Engr. Tie Book

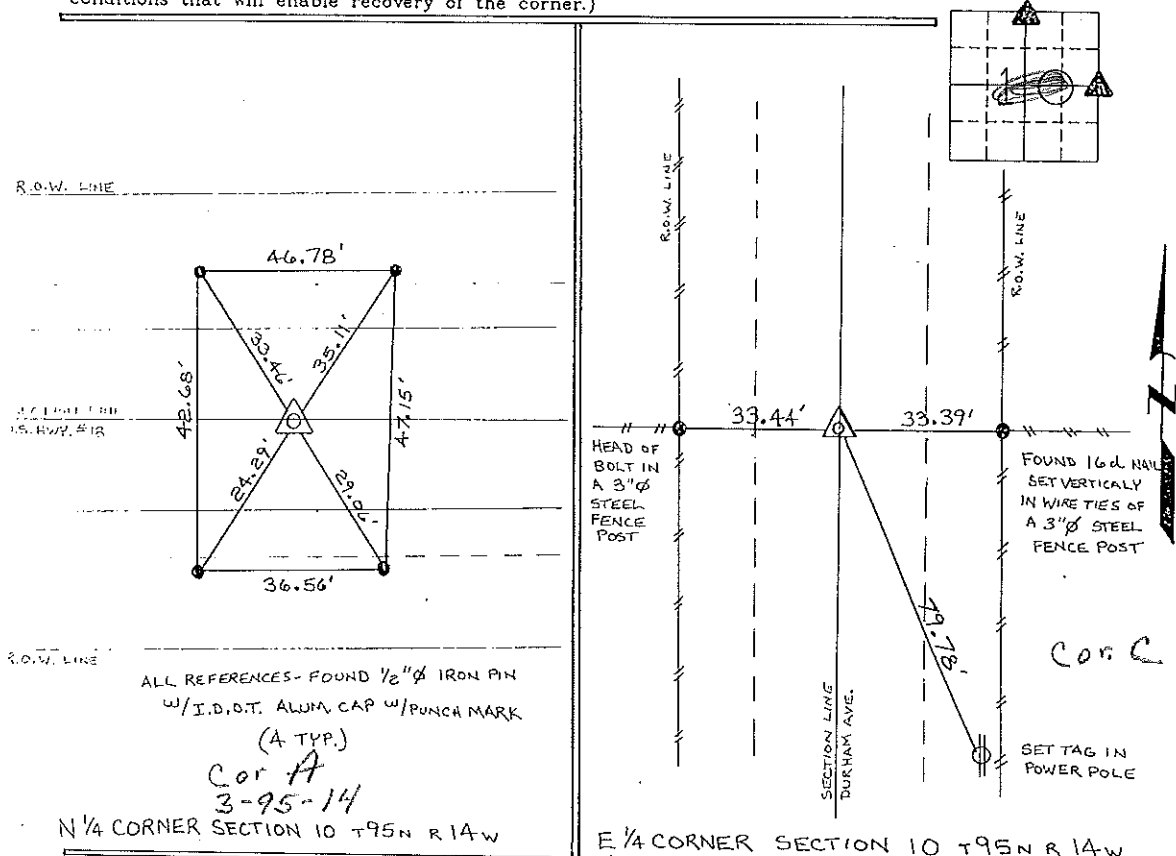
(Show reason for preparing this certificate, the evidence and detailed procedures used in establishing the corner positions and monumentation found or placed.)

Monument Description and Remarks: N 1/4 CORNER SECTION 10 T 95 N R 14 W: FOUND I.D.O.T. ALUMINUM MONUMENT & U.S. HWY 18.

E 1/4 CORNER SECTION 10 T 95 N R 14 W: SET 1/2" Ø REBAR w/CAP TO GO ON LINE BETWEEN EAST-WEST FENCE LINES, USING TIES OBTAINED FROM COUNTY ENGINEERS RECORDS.

PLAN - VIEW

(Show a minimum of three reference ties to durable physical objects, relevant monuments and physical conditions that will enable recovery of the corner.)



I hereby certify that the survey work was completed and this certificate was prepared by me or under my direct personal supervision and that I am a duly registered land surveyor under the laws of the state of Iowa.

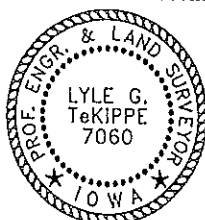
Signature: *Lyle G. TeKippe*

Lyle G. TeKippe

Date: 8-17-95 Reg. No. 7060

My Registration Renewal Date is December 31, 1996

Seal



List Corners to be Indexed			
Corners	Section	Twp.	Range
N 1/4	10	95 N	14 W
A	3-95-14		
E 1/4	10	95 N	14 W
C	10-95-14		

*Placed on tie book 9/15/97*