

# UNITED STATES PUBLIC LAND SURVEY CORNER CERTIFICATE

OF 9

Land Survey Monuments situated in Section 10, Township 95 North, Range 14 West, of the Fifth Principal Meridian, CHICKASAW County, Iowa.  
 Previously recorded in NONE in County Recorder's Office.  
(book, page, document number, etc.)

(Show reason for preparing this certificate, the evidence and detailed procedures used in establishing the corner positions and monumentation found or placed.)

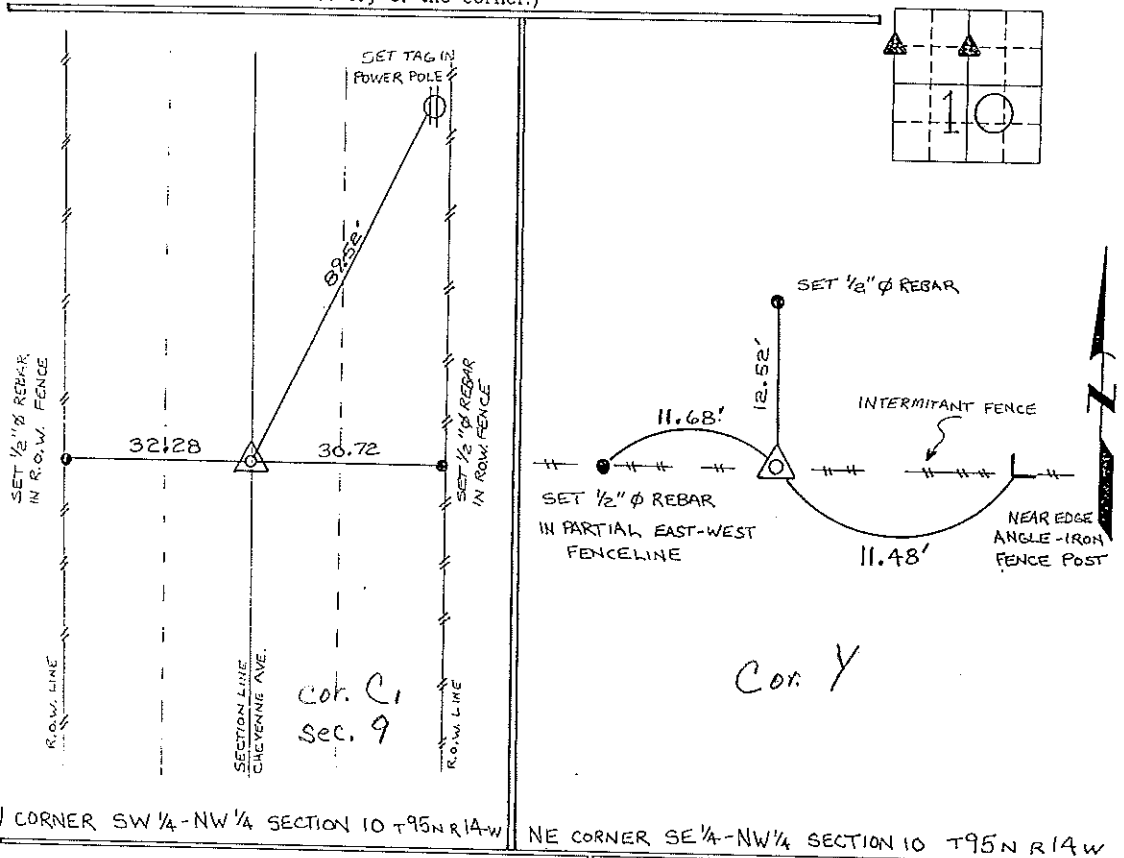
Monument Description and Remarks: NW CORNER SW 1/4 - NW 1/4 SECTION 10 T95N R14W: SET 1/2" Ø REBAR w/ CAP 7060, ON LINE AND EQUADISTANT BETWEEN THE NW CORNER AND THE W 1/4 CORNER.

NE CORNER SE 1/4 - NW 1/4 SECTION 10 T95N R 14W: SET 1/2" Ø REBAR w/ CAP 7060, ON LINE AND EQUADISTANT BETWEEN THE N 1/4 CORNER AND THE CALCULATED CENTER OF SECTION.

*Section 9-95-14  
As referred to in  
Engl Tie Book*

## PLAN - VIEW

(Show a minimum of three reference ties to durable physical objects, relevant monuments and physical conditions that will enable recovery of the corner.)

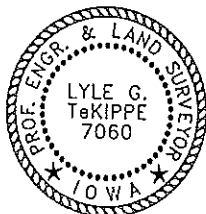


I hereby certify that the survey work was completed and this certificate was prepared by me or under my direct personal supervision and that I am a duly registered land surveyor under the laws of the state of Iowa.

Signature: Lyle G. TeKippe  
 Lyle G. TeKippe

Date: 8-17-95 Reg. No. 7060  
 My Registration Renewal Date is December 31, 1996

Seal



List Corners to be Indexed			
Corners	Section	Twp.	Range
NW SW 1/4 NW 1/4	10	95N	14W
<b>C, 9-95-14</b>			
NE SE 1/4 NW 1/4	10	95N	14W

X 10-95-14

*Placed in tie book  
9/15/95*