



Prepared by: Erdman Engineering, P.C., 708 Commerce Drive, P.O. Box 246, Decorah, Iowa, (563)382-4194

UNITED STATES PUBLIC LAND SURVEY CORNER CERTIFICATE  
 OF

Land Survey Monuments situated in Section 12, Township 95 North, Range 14 West, of the Fifth Principal Meridian, Chickasaw County, Iowa, Previously recorded in does not apply in the County Recorder's Office.

Monument Description and Remarks:

This certificate is prepared in accordance with Section 355.11 of the Code of Iowa. No previous certificates have been filed for these corner locations.

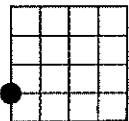
**WSW 1/8 Corner:** We found no record of the WSW 1/8 Corner being set. We found no evidence of a monument in the field. We found the SW corner and the W 1/4 Corner. The plat of survey recorded in Book 148 of Deeds page 302 in the Chickasaw County Recorder's Office shows a record distance 1326.12' from the SW corner to the NW Corner of the SW 1/4 of the SW 1/4. We set a Mag-nail with 1 1/2" diameter stainless steel washer #11442 on line between the SW corner and the W 1/4 Corner and at the record distance of 1326.12' from the SW Corner as the WSW 1/8 Corner of Section 12, Township 95 North, Range 14 West.

**SW 1/16 Corner:** The plat of survey recorded in Book 148 of Deeds page 302 in the Chickasaw County Recorder's Office shows that a #5 rebar was found at the NE Corner of the SW 1/4 of the SW 1/4. We found a 5/8" diameter steel bar that matches the description and location of the monument previously. We used the monument as the SW 1/16 Corner of Section 12, Township 95 North, Range 14 West.

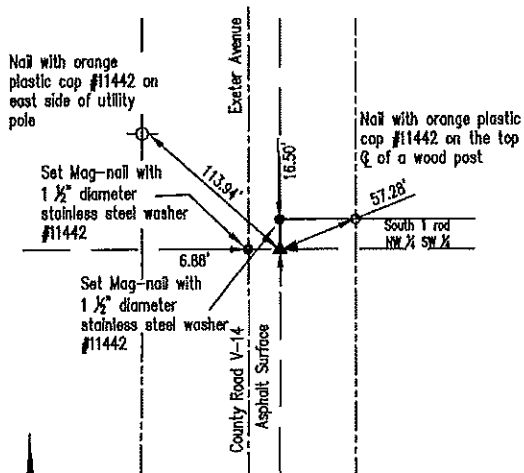
PLAN-VIEW  
 (NOT TO SCALE)

WSW 1/8 CORNER

Set Mag-nail with 1 1/2" diameter stainless steel washer #11442



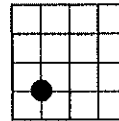
SECTION 12



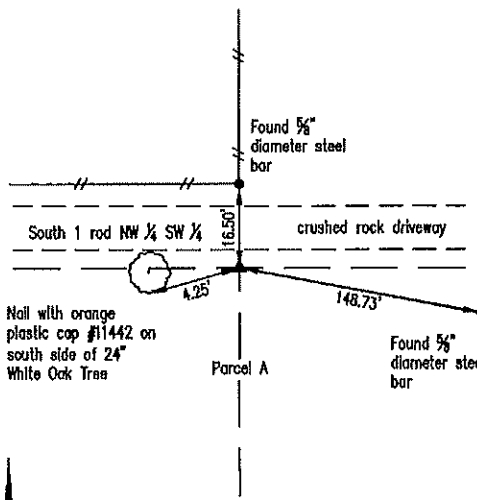
Cor B1  
 Sec 11-95-14

SW 1/16 CORNER

Found 5/8" diameter steel bar



SECTION 12



Cor I  
 Sec 22-95-14

I hereby certify that this land surveying document was prepared and the related survey work was performed by me or under my direct personal supervision and that I am a duly licensed Land Surveyor under the laws of the State of Iowa.

*Lindsay Erdman* 2/1/21  
 Date

Lindsay Erdman, P.R. & P.L.S.  
 Licensed Professional Land Surveyor  
 Iowa License Number 11442

My License renewal date is December 31, 2022.  
 Pages or sheets covered by this seal: THIS SHEET ONLY

List Corner(s) to be Indexed

Corner(s)	Section	Township	Range
WSW 1/8	12	95N	14W
SW 1/16	12	95N	14W



**ERDMAN**  
**ENGINEERING, P.C.**  
 CIVIL ENGINEERING & LAND SURVEYING  
 Decorah, Iowa