

PREPARED BY / RETURN TO: KENNETH D. STARK IOWA DEPARTMENT OF TRANSPORTATION 428 43rd ST. SW MASON CITY, IA 50401 641-423-7584

UNITED STATES PUBLIC LAND SURVEY CORNER CERTIFICATE

OF

Land Survey Monuments situated in Section 11², Township 95N, Range 14W
 of the Fifth Principal Meridian, CHICKASAW County, Iowa.

Previously recorded in 2003-2254, 2006-1980 in County Recorder's Office.
(book, page, document number, etc.)

(Show reason for preparing this certificate, the evidence and detailed procedures used in establishing the corner positions and monumentation found or placed.)

Monument Description and Remarks: NW CORNER: Replaced previously found SMN/IDOT washer with a SMN/IDOT Sec. Cor. washer, 5.6' +/- South of US 18 per previous cert of record 2003-2254 after HMA resurfacing project MP-018-2(707)220--76-19.

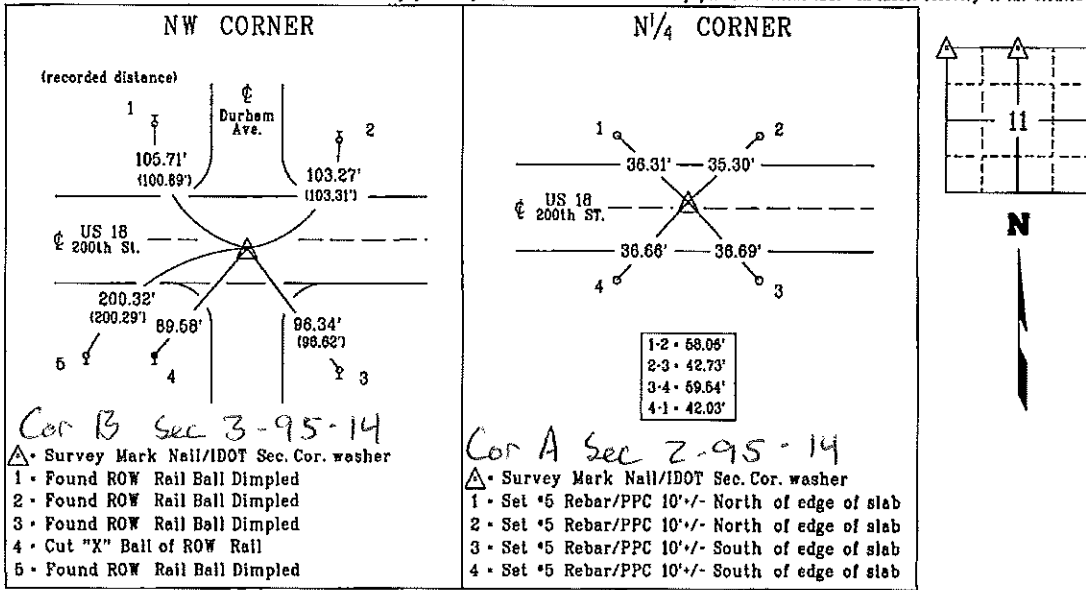
Reason for cert: Monumentation and ties have changed.

N¹/₄ CORNER: Replaced previously found SMN/IDOT washer with a SMN/IDOT Sec. Cor. washer, 0.3' +/- North of US 18 per previous cert of record 2006-1980 after HMA resurfacing project MP-018-2(707)220--76-19.

Reason for cert: Monumentation and ties have changed.

PLAN - VIEW

(Show a minimum of three reference ties to durable physical objects, relevant monuments and physical conditions that will enable recovery of the corner.)



- Cor B Sec 3-95-14**
- ▲ Survey Mark Nail/IDOT Sec. Cor. washer
 - 1 - Found ROW Rail Ball Dimpled
 - 2 - Found ROW Rail Ball Dimpled
 - 3 - Found ROW Rail Ball Dimpled
 - 4 - Cut "X" Ball of ROW Rail
 - 5 - Found ROW Rail Ball Dimpled

- Cor A Sec 2-95-14**
- ▲ Survey Mark Nail/IDOT Sec. Cor. washer
 - 1 - Set #5 Rebar/PPC 10' +/- North of edge of slab
 - 2 - Set #5 Rebar/PPC 10' +/- North of edge of slab
 - 3 - Set #5 Rebar/PPC 10' +/- South of edge of slab
 - 4 - Set #5 Rebar/PPC 10' +/- South of edge of slab

List Corners to be Indexed

Corner	Section	Township	Range
NW CORNER	11	95N	14W
N ¹ / ₄ CORNER	11	95N	14W

PPC - Pink Plastic Cap
 SMN - Survey Mark Nail

I hereby certify that this land surveying document was prepared and the related survey work was performed by me or under my personal supervision and that I am duly licensed Land Surveyor under the laws of the state of Iowa.

Kenneth D. Stark
 Kenneth D. Stark Date
 License number 10898
 My License renewal date is December 31, 2017
 Pages or sheets covered by this seal. 1



9/25/2006
2006-1980

TeKIPPE ENGINEERING, P.C., 128 South Vine Street, West Union, Iowa 52175 Phone (563) 422-5131

UNITED STATES PUBLIC LAND SURVEY CORNER CERTIFICATE

OF

Land Survey Monuments situated in Section 2, Township 95 North, Range 14 West of the Fifth Principal Meridian, Chickasaw County, Iowa.

Previously recorded in none in County Recorder's Office.
(book, page, document number, etc.)

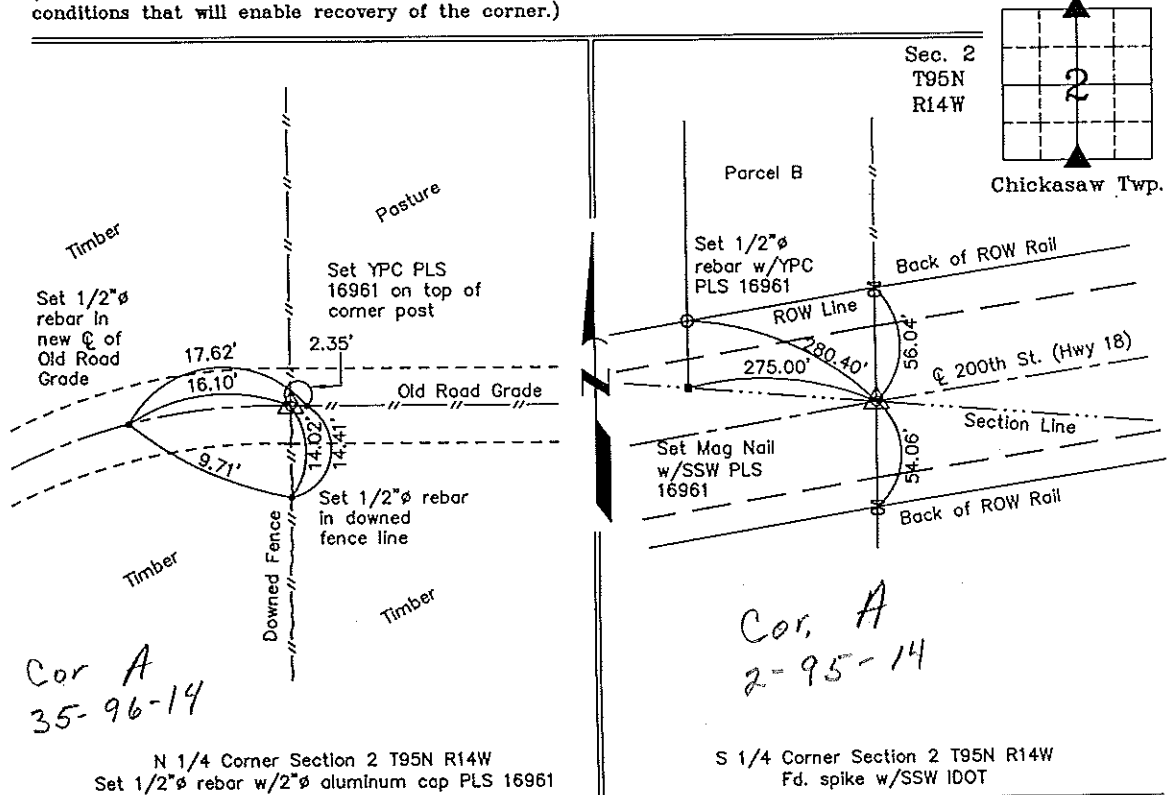
(Show reason for preparing this certificate, the evidence and detailed procedures used in establishing the corner positions and monumentation found or placed.)

Monument Description and Remarks: N 1/4 Corner Section 2 T95N R14W: Set 1/2"Ø rebar with 2"Ø aluminum cap PLS 16961 at the intersection of the Centerline of the old road and existing fences.

S 1/4 Corner Section 2 T95N R14W: Found spike with Stainless Steel Washer IDOT.

PLAN - VIEW

(Show a minimum of three reference ties to durable physical objects, relevant monuments and physical conditions that will enable recovery of the corner.)



Cor A
35-96-14

Cor. A
2-95-14

N 1/4 Corner Section 2 T95N R14W
Set 1/2"Ø rebar w/2"Ø aluminum cap PLS 16961

S 1/4 Corner Section 2 T95N R14W
Fd. spike w/SSW IDOT



I hereby certify that this land surveying document was prepared and the related survey work was performed by me or under my direct personal supervision and that I am a duly licensed Land Surveyor under the laws of the State of Iowa.

Michael J. Shimak September 21, 2006

Michael J. Shimak Date

License number 16961
My license renewal date is December 31, 2007.
Sheets covered by this seal: Individual

List Corners to be Indexed			
Corners	Section	Twp.	Range
N 1/4	2	95N	14W
S 1/4	2	95N	14W

Project Number 04258.15
FE 48M, PGS 23-24

X:\Section Corners\Sec. 02\2-95-14cw.dwg