



Prepared by: Erdman Engineering, P.C., 708 Commerce Drive, P.O. Box 246, Decorah, Iowa, (563)382-4194

UNITED STATES PUBLIC LAND SURVEY CORNER CERTIFICATE
 OF

Land Survey Monuments situated in Section 12, Township 95 North, Range 14 West, of the Fifth Principal Meridian, Chickasaw County, Iowa, Previously recorded in does not apply in the County Recorder's Office.

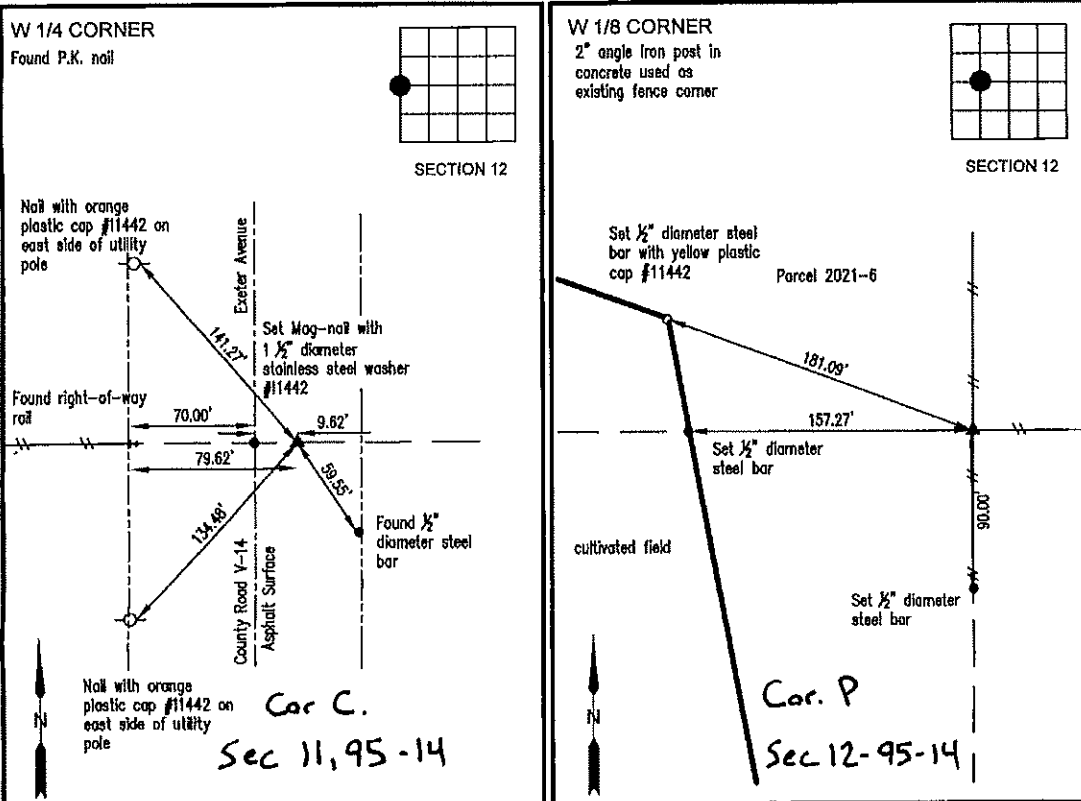
Monument Description and Remarks:

This certificate is prepared in accordance with Section 355.11 of the Code of Iowa. No previous certificates have been filed for these corner locations.

W 1/4 Corner: Based on Chickasaw County Engineer's Reference Ties we found a right-of-way rail and an iron pin that had been used previously as tie markers. From these ties we found a P.K. nail 9.2' east of the centerline of County Road V-14 that matches the description of the monument set previously as the W 1/4 Corner of Section 12, Township 95 North, Range 14 West.

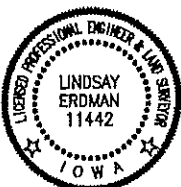
W 1/8 Corner: We found no record of the W 1/8 Corner being set. We found no evidence of a monument in the field other than an existing ±5' tall, 2" angle iron set in concrete being used as a fence corner with fence lines running north, south and east. We used the fence corner as the W 1/8 Corner of Section 12, Township 95 North, Range 14 West after comparing the distances to adjacent corners in this Section. We set a 1/2" diameter steel bar with 1 1/2" aluminum cap #11442 on the west side of the post.

PLAN-VIEW
 (NOT TO SCALE)



I hereby certify that this land surveying document was prepared and the related survey work was performed by me or under my direct personal supervision and that I am a duly licensed Land Surveyor under the laws of the State of Iowa.

Lindsay Erdman 2/1/21
 Date
 Lindsay Erdman, P.E. & P.L.S.
 Licensed Professional Land Surveyor
 Iowa License Number 11442
 My License renewal date is December 31, 2022
 Pages or sheets covered by this seal: THIS SHEET ONLY



List Corner(s) to be indexed

Corner(s)	Section	Township	Range
W 1/4	12	95N	14W
W 1/8	12	95N	14W

ERDMAN ENGINEERING, P.C.
 CIVIL ENGINEERING & LAND SURVEYING
 Decorah, Iowa