

Prepared by & Return to Herold - Reicks Surveying, 19 East Main Street, New Hampton, IA 56558, Ph. 641-394-2725

### UNITED STATES PUBLIC LAND SURVEY CORNER CERTIFICATE

Land Survey Monuments situated in Section 12, Township 95 North, Range 14 West of the Fifth Principal Meridian, Chickasaw County, Iowa. 1., 2.) Not previously recorded in the County Recorder's office.

This certificate is being prepared in compliance with Iowa Code Chapter 355.11 because:

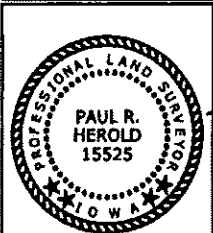
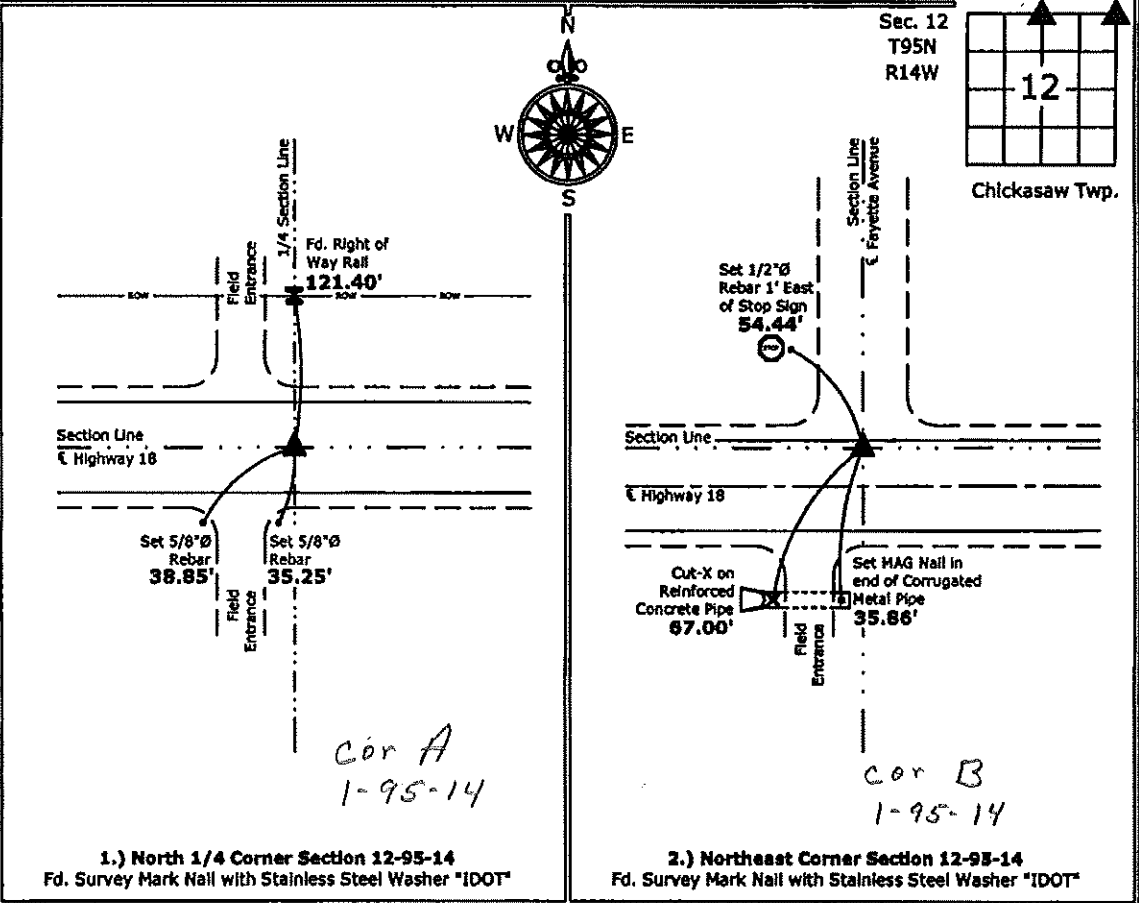
- 1., 2.)  There is no certificate on file for this corner.
- There are no longer three valid ties of record.
- There are changes to reference ties of record.
- There is change of monumentation of record.
- To clarify description of record monument (ties).

**Monument Description and Remarks:**

- 1.) **North 1/4 Corner:** Found Survey Mark Nail with Stainless Steel Washer "IDOT" from information obtained from the Iowa Department of Transportation.
- 2.) **Northeast Corner:** Found Survey Mark Nail with Stainless Steel Washer "IDOT" from information obtained from the Iowa Department of Transportation.

#### PLAN - VIEW

(Show a minimum of three reference ties to durable physical objects, relevant monuments and physical conditions that will enable recovery of the corner.)



I hereby certify that this land surveying document was prepared by me or under my direct personal supervision and that I am a duly licensed Land Surveyor under the laws of the State of Iowa.

*Paul R. Herold*  
 Paul R. Herold Date: 1-12-12  
 License number 15525  
 My license renewal date is December 31, 2012.  
 Sheets covered by this seal: Individual sheet only

List Corners to be Indexed			
Corners	Section	Twp.	Range
N 1/4	12	95	14
NE	12	95	14

Project Number: 2011-131  
 FB: Chickasaw County 4, Pgs. 21, 22