

Prepared by & Return to: Herold - Reicks Surveying, 13 East Main Street, New Hampton, IA 50659, Ph. 641-394-2725

UNITED STATES PUBLIC LAND SURVEY CORNER CERTIFICATE

Land Survey Monuments situated in Section ¹³ 18, Township ¹⁴ 95 North, Range 13 West of the Fifth Principal Meridian, Chickasaw County, Iowa. 1., 2.) Not previously recorded in the County Recorder's office.

This certificate is being prepared in compliance with Iowa Code Chapter 355.11 because:

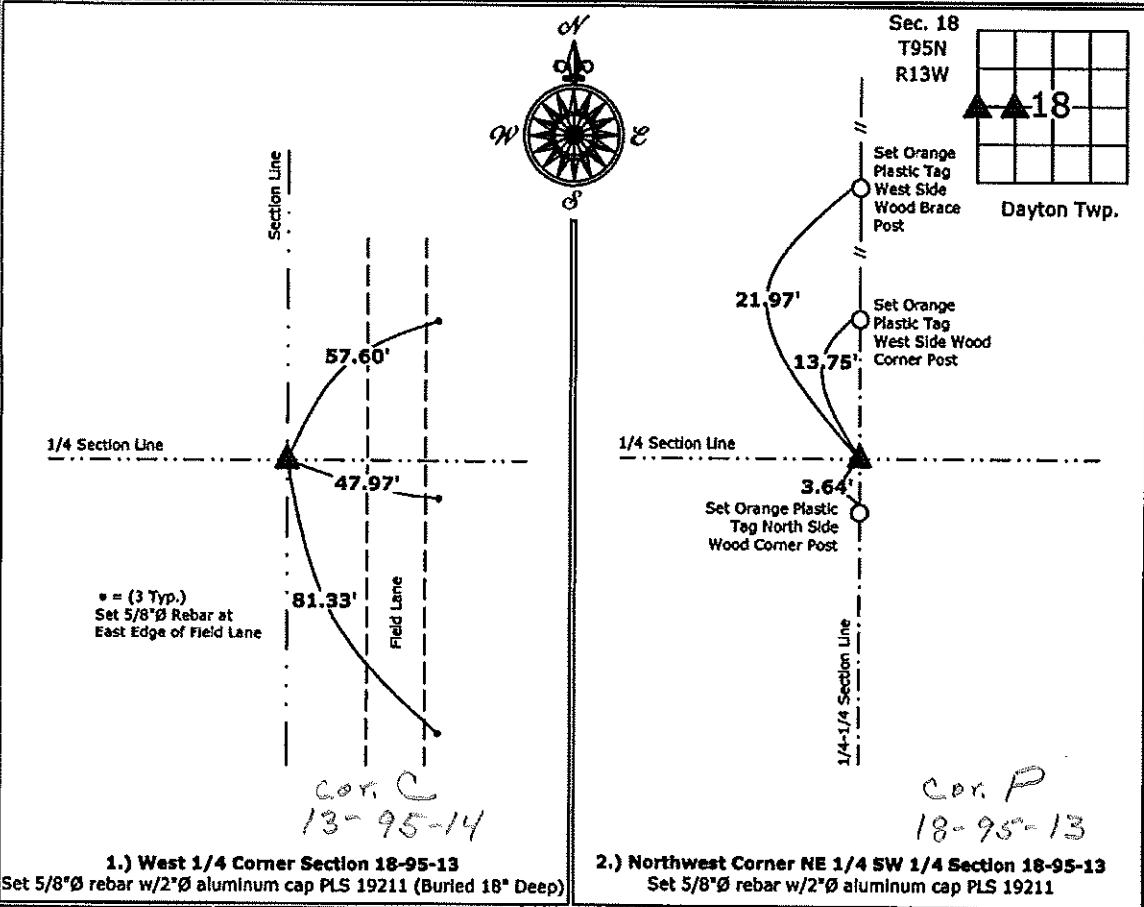
- 1 & 2 There is no certificate on file for this corner.
 There are no longer three valid ties of record.
 There are changes to reference ties of record.
 There is change of monumentation of record.
 To clarify description of record monument (ties).

Monument Description and Remarks:

- 1.) **West 1/4 Corner:** Set 5/8"Ø rebar w/2"Ø aluminum cap PLS 19211 at the Intersection of a Line from the East 1/4 through the Center and a Line from the Southwest Corner to the Northwest Corner of Section 18. Position matches record distances to fences to the West.
- 2.) **Northwest Corner NE 1/4-SW 1/4:** Did not locate Stone per Survey and Plat made by G.W. Cotant on August 16, 1904. Set 5/8"Ø rebar with 2"Ø aluminum Cap PLS 19211 on line between the West Quarter Corner and the Center of Section and at a possession line fence running North.

PLAN - VIEW

(Show a minimum of three reference ties to durable physical objects, relevant monuments and physical conditions that will enable recovery of the corner.)



1.) **West 1/4 Corner Section 18-95-13**
 Set 5/8"Ø rebar w/2"Ø aluminum cap PLS 19211 (Buried 18" Deep)

2.) **Northwest Corner NE 1/4 SW 1/4 Section 18-95-13**
 Set 5/8"Ø rebar w/2"Ø aluminum cap PLS 19211



I hereby certify that this land surveying document was prepared and the related survey work was performed by me or under my direct personal supervision and that I am a duly licensed Land Surveyor under the laws of the State of Iowa.

Kirk D. Reicks 11-30-12
 Kirk D. Reicks Date:

License number 19211
 My license renewal date is December 31, 2012.
 Sheets covered by this seal: Individual sheet only

List Corners to be Indexed			
Corners	Section	Twp.	Range
W 1/4	18	95	13
NW-NE-SW	18	95	13

Project Number: 2012-167
 FB: Chickasaw County 4, Pgs. 65-67