

UNITED STATES PUBLIC LAND SURVEY CORNER CERTIFICATE

OF

Land Survey Monuments situated in Section 14, Township 95 North, Range 14 West, of the Fifth Principal Meridian, CHICKASAW County, Iowa. Previously recorded in Book 162 Page 459 in County Recorder's Office. (book, page, document number, etc.)

(Show reason for preparing this certificate, the evidence and detailed procedures used in establishing the corner positions and monumentation found or placed.)

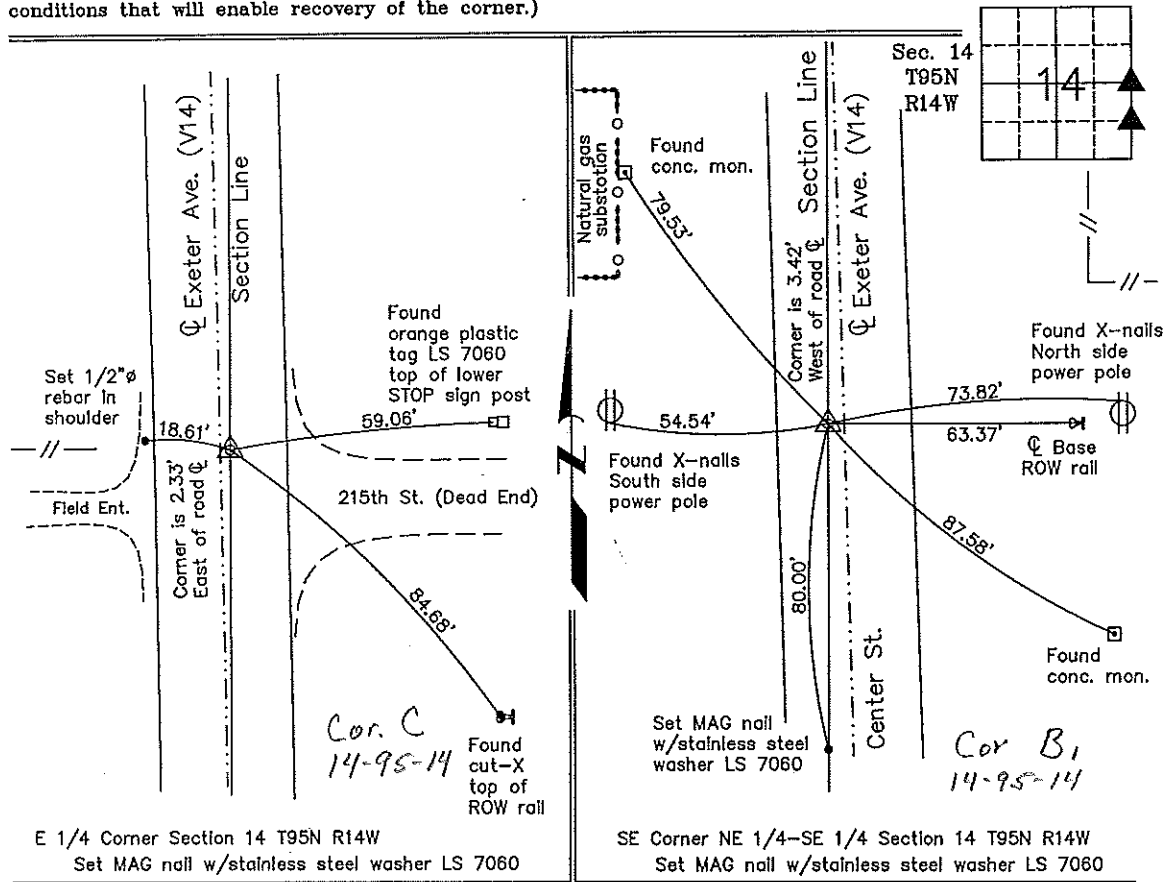
Monument Description and Remarks: E 1/4 Corner Section 14 T95N R14W: Set MAG nail w/stainless steel washer LS 7060.

SE Corner NE 1/4-SE 1/4 Section 14 T95N R14W: Set MAG nail w/stainless steel washer LS 7060.

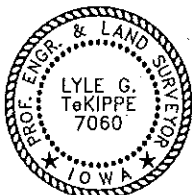
NOTE: Both previous corners were covered with an ACC mat and were reset with ties obtained from the previous Corner Certificate recorded in the Chickasaw County Recorder's Office in Book 162 Page 459.

PLAN - VIEW

(Show a minimum of three reference ties to durable physical objects, relevant monuments and physical conditions that will enable recovery of the corner.)



I hereby certify that this land surveying document was prepared and the related survey work was performed by me or under my direct personal supervision and that I am a duly licensed Land Surveyor under the laws of the State of Iowa.



Lyle G. TeKippe 3-24-99
Lyle G. TeKippe Date
License number 7060
My license renewal date is December 31, 2000.
Sheets covered by this seal: Individual

List Corners to be Indexed

Corners	Section	Twp.	Range
---------	---------	------	-------

E 1/4	14	95N	14W
Corner C	14-95-14		
SE-NE-SE	14	95N	14W

Cor B1 14-95-14 Placed in the Book 3125799

"County Engineer's Copy"

See BK 162 Pg 459

TEKIPPE ENGINEERING, P.C., 128 South Vine Street, West Union, Iowa 52175 Phone (319) 422-5131

UNITED STATES PUBLIC LAND SURVEY CORNER CERTIFICATE

OF

Land Survey Monuments situated in Section 14, Township 95 North, Range 14 West, of the Fifth Principal Meridian, CHICKASAW County, Iowa. Previously recorded in NONE in County Recorder's Office.

(book, page, document number, etc.)

(Show reason for preparing this certificate, the evidence and detailed procedures used in establishing the corner positions and monumentation found or placed.)

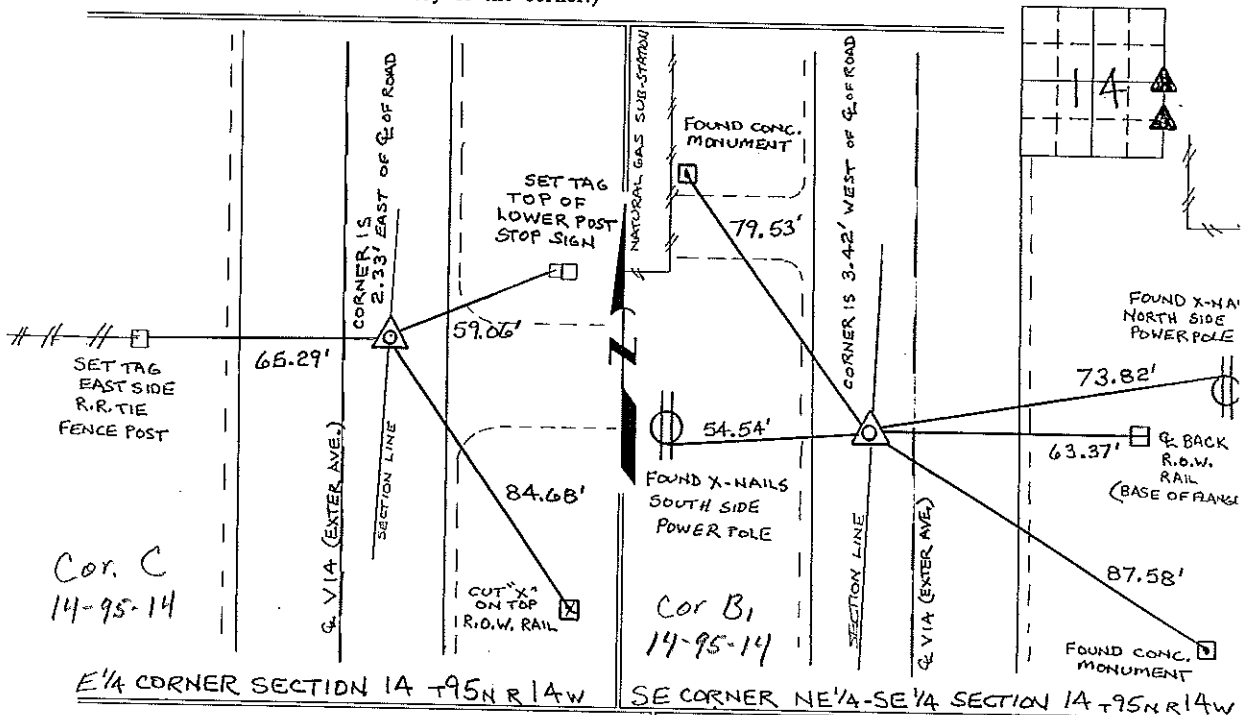
Monument Description and Remarks: E 1/4 CORNER SECTION 14 T95N R14W: FOUND PK NAIL 0.2 DEEP IN AC MAT 2.33' EAST OF THE Q OF V14 (EXTER AVE).

SE CORNER NE 1/4-SE 1/4 SECTION 14 T95N R14W: FOUND NAIL SHAFT MATCHING COUNTY TIES, REPLACED WITH A PK NAIL.

NOTE: BOTH CORNERS WERE FOUND FROM INFORMATION OBTAINED FROM THE COUNTY ENGINEER'S OFFICE.

PLAN - VIEW

(Show a minimum of three reference ties to durable physical objects, relevant monuments and physical conditions that will enable recovery of the corner.)



E 1/4 CORNER SECTION 14 T95N R14W

SE CORNER NE 1/4-SE 1/4 SECTION 14 T95N R14W

I hereby certify that the survey work was completed and this certificate was prepared by me or under my direct personal supervision and that I am a duly registered land surveyor under the laws of the state of Iowa.

Signature: Lyle G. Tekippe

Lyle G. Tekippe

Date: 11-26-96 Reg. No. 7060

My Registration Renewal Date is December 31, 1996

Seal



List Corners to be Indexed

Corners	Section	Twp.	Range
E 1/4	14	95	14W
Cor C 14-95-14			
SE-NE-SE	14	95	14W
Cor B ₁ 14-95-14			

*Placed in tie Book
12/13/96*

162-459

"County Engineer's Copy"