

2002 AUG 9 AM 9 12

CINDY MESSERSMITH  
 COUNTY RECORDER

TEKIPPE ENGINEERING, P.C., 128 South Vine Street, West Union, Iowa 52176 Phone (563) 422-5131

UNITED STATES PUBLIC LAND SURVEY CORNER CERTIFICATE

OF

Land Survey Monuments situated in Section 11, Township 95 North, Range 14 West of the Fifth Principal Meridian, CHICKASAW County, Iowa.  
 Previously recorded in none in County Recorder's Office.  
(book, page, document number, etc.)

(Show reason for preparing this certificate, the evidence and detailed procedures used in establishing the corner positions and monumentation found or placed.)

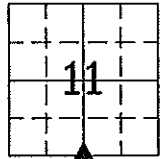
Monument Description and Remarks: **S 1/4 Corner Section 11 T95N R14W: Set 1/2"Ø rebar w/2"Ø aluminum cap PLS 15525 by doubling the distance from the SE Corner to and across a point in the centerline of the road that is 33.0' normally distant from a found 1/2"Ø rebar w/yellow plastic cap 9018.**

PLAN - VIEW

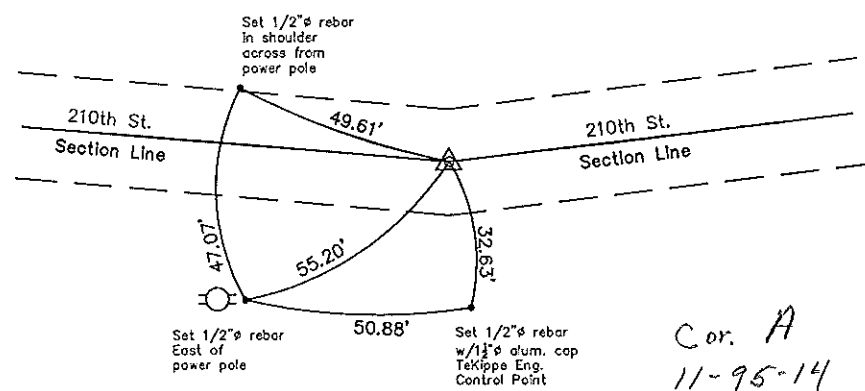
Project Number 02183.IS  
 FB. 48J PG. 24-25

(Show a minimum of three reference ties to durable physical objects, relevant monuments and physical conditions that will enable recovery of the corner.)

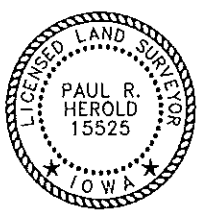
Sec. 11  
 T95N  
 R14W



Chickasaw Twp.



S 1/4 Corner Section 11 T95N R14W  
 Set 1/2"Ø rebar w/2"Ø aluminum cap PLS 15525



I hereby certify that this land surveying document was prepared and the related survey work was performed by me or under my direct personal supervision and that I am a duly licensed Land Surveyor under the laws of the State of Iowa.  
*Paul R. Herold* 8-8-02  
 Paul R. Herold Date  
 License number 15525  
 My license renewal date is December 31, 2002.  
 Sheets covered by this seal: Individual

List Corners to be Indexed			
Corners	Section	Twp.	Range
S 1/4	11	95N	14W

Filed 8-13-02