

UNITED STATES PUBLIC LAND SURVEY CORNER CERTIFICATE

OF

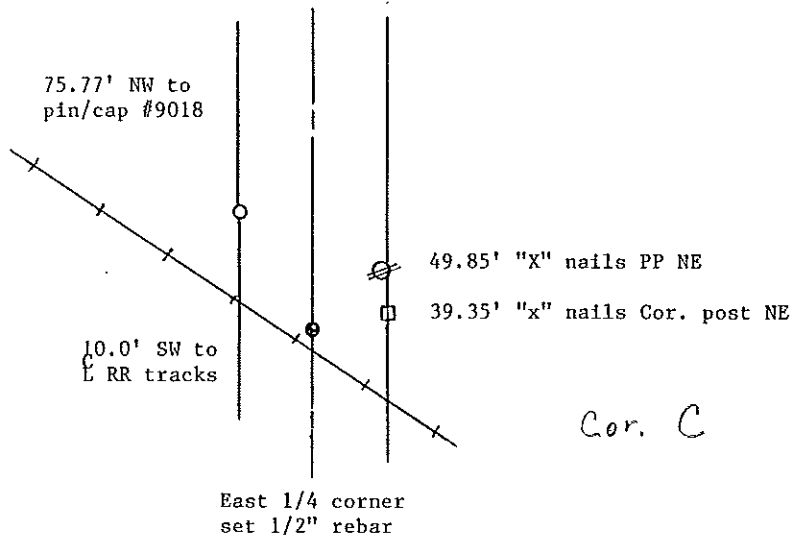
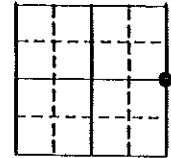
Land Survey Monuments situated in Section 15, Township 95 North, Range 14 West, of the Fifth Principal Meridian, Chickasaw County, Iowa. Previously recorded in N/A in County Recorder's Office.

(Show reason for preparing this certificate, the evidence and detailed procedures used in establishing the corner positions and monumentation found or placed.)

Monument Description and Remarks: see below

PLAN - VIEW

(Show a minimum of three reference ties to durable physical objects, relevant monuments and physical conditions that will enable recovery of the corner.)



Cor. C

I hereby certify that the survey work was completed and this land surveying document was prepared by me or under my direct personal supervision and that I am a duly registered land surveyor under the laws of the state of Iowa

Signature: Steve Busse Name typed or printed: STEVE BUSSE

Date: 4/17/95 Reg. No. 9018

My registration renewal date is December 31, 1996

SEAL

Corners	List Corners to be Indexed		
	Section	Twp	Range
East 1/4 cor.	15	95	14

Cor C - 15-94-14
Placed in Tie Book 4/18/95
JFM