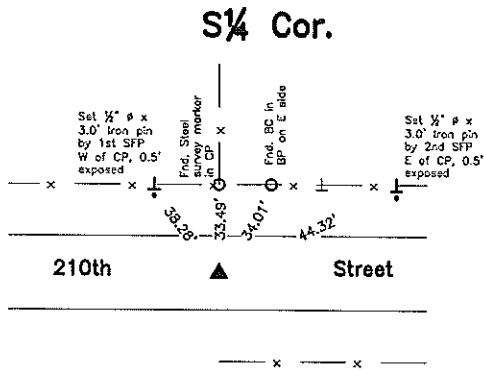
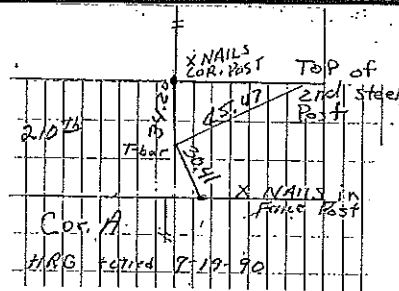


BK 2006-1889



CO ENGR'S RECORD TIES



COR. A
 STONE Iron 7-28-30 Found T-bar 9-19-90 BK 145 pg 410
 10-95-14 Found T-bar 9-19-90 BK 145 pg 410

Monument Description, Remarks, and Plan View:

SE 1/4 Cor. - History of Corner =

- 1930, 4-28 - 'FOUND STONE PLACED I.P.' per Co Engr's ties for Sec 10-95-14.
- 1976, Jan. 13 - 'set 'T' bar' per Co Rec's Bk 110 Deeds, Pg 472.
- 1990, Sept 19 - 'Found T-BAR' per Co Rec's Bk 145 Deeds, Pg 410 and 418.
- 1995, 4/13 - 'Fd. Iron bar' per Co Rec's Bk 157 Deed, Pg 333,334.
- 1995, 11-8 - 'Fd. T-Bar' per Co Rec's Bk 159, Pg 318.

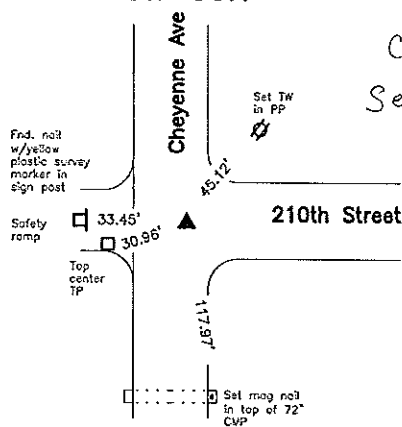
Co Engr's previous records indicate that corner was monumented with 'STONE and IRON'.
 Co Engr's current records indicate that corner is monumented with 'T-Bar' with ties as shown above.

Corner Recovery = Searched area with metal detector and excavated 0.5' x 0.5' x 0.5' deep hole at magnetic reading and near cross of remaining ties and found bent iron t-bar 0.3' deep with nail and flagging on E side. T-bar was bent slightly S, continued excavating a 1.0' x 1.0' x 1.1' hole, tied out straight portion of t-bar and removed. Searched area again with metal detector and continued excavating a 2.0' x 2.0' x 1.5' deep hole around t-bar location and probed 5.0' deep and found nothing. Monument found matches that of record and record ties are within reason. Therefore, set 3/4" x 4.0' Alum capped (#14677) Iron rod (stamped "10", "15", and "1/4 Cor") at location of straight portion of t-bar to perpetuate monumentation and used as the correct corner. Location of rod is 1.5' ± N of centerline of gravel road E-W and in-line with fencelines N. Rod is 0.4' deep. All ties are plumb distance unless indicated otherwise.

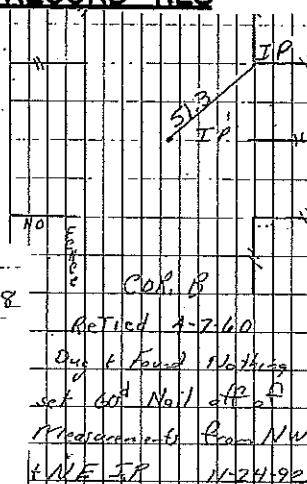
This certificate is being prepared because there are no longer three valid ties of record and there is a change to monumentation of record.

SW Cor.

CO ENGR'S RECORD TIES



COR. B
 Sec 9-95-14



COR. B Iron Pin 1928
 Found No Stone set I.P. MedWAY between FENCE COR.
 ReTied 7-7-60
 Dug & Found Nothing set 60d Nail off of Measurements from NW & NE I.P. per Co Engr's ties for Sec 9-95-14.
 Measurements from NW & NE I.P. 11-24-92

Monument Description, Remarks, and Plan View:

SW Cor. - History of Corner =

- 1928 - 'Found No Stone set I.P. MedWAY Between Fence Cor.' per Co Engr's ties for Sec 9-95-14.
- 1960, 4-7 - 'ReTied' per Co Engr's ties for Sec 9-95-14.
- 1992, 11-24 - 'Dug and Found Nothing set 60d Nail off of Measurements from NW & NE I.P.' per Co Engr's ties for Sec 9-95-14.
- 2004, 03-30 - 'Found Iron Pin' per Co Rec's Doc. 2004-0788.

Co Engr's previous records indicate that corner was monumented with 'I.P. and 60d Nail'.
 Co Engr's current records indicate that corner is monumented with 'IP' with ties as shown above.

Corner Recovery = Searched area with metal detector and excavated 1.0' x 1.0' x 0.8' deep hole at magnetic reading and found a 5/8" x iron pin with pink flagging 0.6' deep. Probed on all sides of iron pin and hit possible roadbed at 3.3' ± deep. County ties indicate corner was dug for and not found in 1928. Monument found matches that of record. Therefore, used pin as the correct corner. Pin is 2.5' ± E of centerline of gravel road N-S and in-line with centerline of gravel road E. All ties are plumb distance unless indicated otherwise.

This certificate is being prepared because there are no verifiable on file for this corner.

Legend

- BC = Nail with Bottle Cap
- BP = Brace Post
- CP = Corner Post
- CMP = Corrugated Metal Pipe
- CM = 4" Sq Concrete Monument with
- 1/2" Iron rod in center (tie to rod)
- CX = Cut 'X'
- GP = Gate Post
- ID = Inside Diameter
- OD = Outside Diameter
- PP = Power Pole
- PW = Nail with Plastic Washer
- RCP = Reinforced Concrete Pipe
- RH = Red Head (Nail in wire)
- ROW = Right of Way
- RW = Nail with Reflective Round Washer
- R/W = Iron ROW Nail
- SFP = Steel 'T' Post
- SW = Nail with Square Metal Washer
- TP = Telephone Pedestal
- TW = Nail with Round Metal Washer
- WFP = Wood Fence Post
- X = X Nails



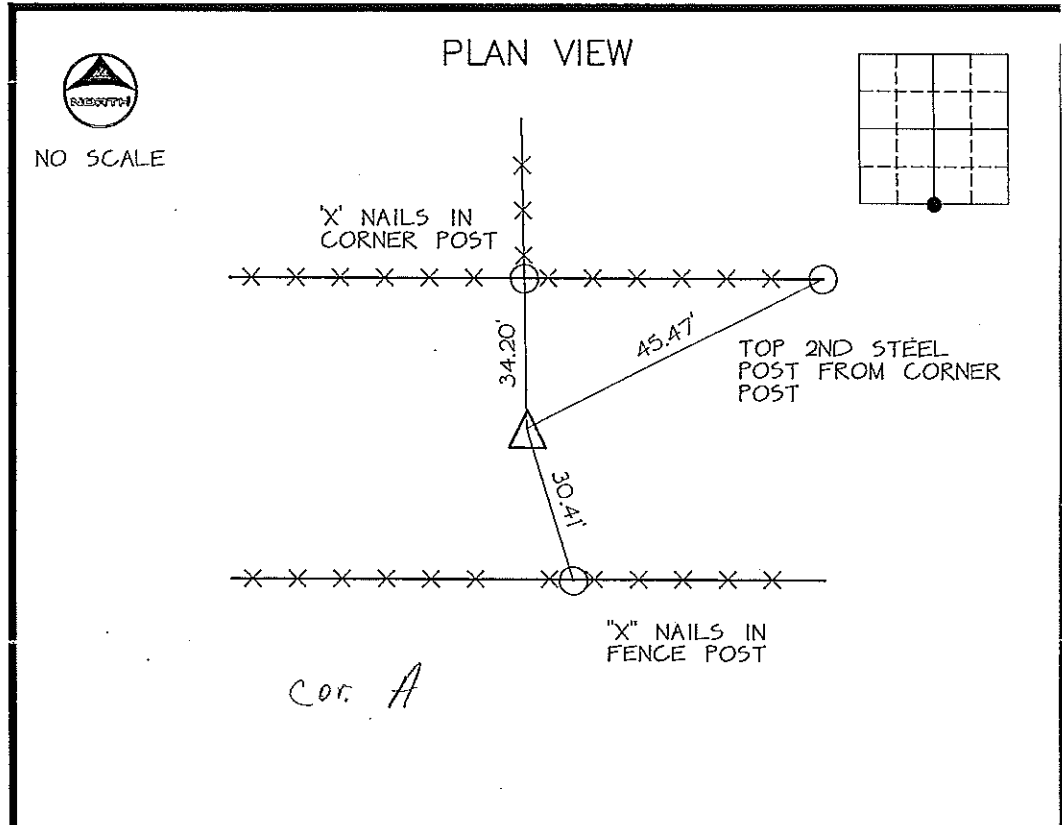
Placed in
the book 10-3-90
JFM

DOCUMENT No. 00532 FILED FOR RECORD THE 3rd DAY OF STATE OF IOWA, CHICKASAW COUNTY,
 RECORDING FEE \$ 5.00 October 1990 AT 9:19 AM
 TRANSFER FEE \$ --- O'CLOCK A.M. BOOK 145 PAGE 410 By *Mary C. Murray* Recorder
 MARY C. MURRAY Deputy

UNITED STATES PUBLIC LAND SURVEY CORNER CERTIFICATE

SECTION 10 , TOWNSHIP 95 , RANGE 14 OF THE 5TH. P.M.
 IN CHICKASAW COUNTY, IOWA
 CORNER: 5 1/4
 DESCRIPTION AND REMARKS: FOUND T-BAR

PREVIOUSLY RECORDED IN BOOK _____, PAGE _____



CERTIFICATION:
 I HEREBY CERTIFY THAT THIS MAP, PLAT, OR SURVEY WAS MADE BY ME OR UNDER MY DIRECT PERSONAL SUPERVISION AND THAT I AM A DULY REGISTERED LAND SURVEYOR UNDER THE LAWS OF THE STATE OF IOWA.
Thomas V. Craft
 THOMAS V. CRAFT REG. L.S. NO. 7542 DATE: 19 SEPT. 1990

DMK/213550

INDEXING ALTERNATIVES			
CORNER	SECTION	TWP	RANGE
N 1/4	15	95	14